

# VOYAGES

DE LA COMMISSION SCIENTIFIQUE DU NORD

EN SCANDINAVIE, EN LAPONIE

AU SPITZBERG ET AUX FERÖE

Pendant les Années 1838, 1839 et 1840

SUR  
LA CORVETTE LA RECHERCHE

COMMANDÉE PAR M. FABVRE

LIEUTENANT DE VAISSEAU

PUBLIÉS PAR ORDRE DU ROI

SOUS LA DIRECTION

DE M. PAUL GAIMARD

PRÉSIDENT DE LA COMMISSION SCIENTIFIQUE DU NORD.

Paris,

1846

ARTHUS BERTRAND, LIBRAIRE-ÉDITEUR,

LIBRAIRE DE LA SOCIÉTÉ DE GÉOGRAPHIE ET DE LA SOCIÉTÉ ROYALE DES ANTIQUAIRES DU NORD,

rue Hautefeuille, 23.





CHIONOECETES OPILO, Fabr.

Norman del.

Arthur Liverpool. Editeur.

Fig. 1.

Chionoecetes opilio, Fabr.



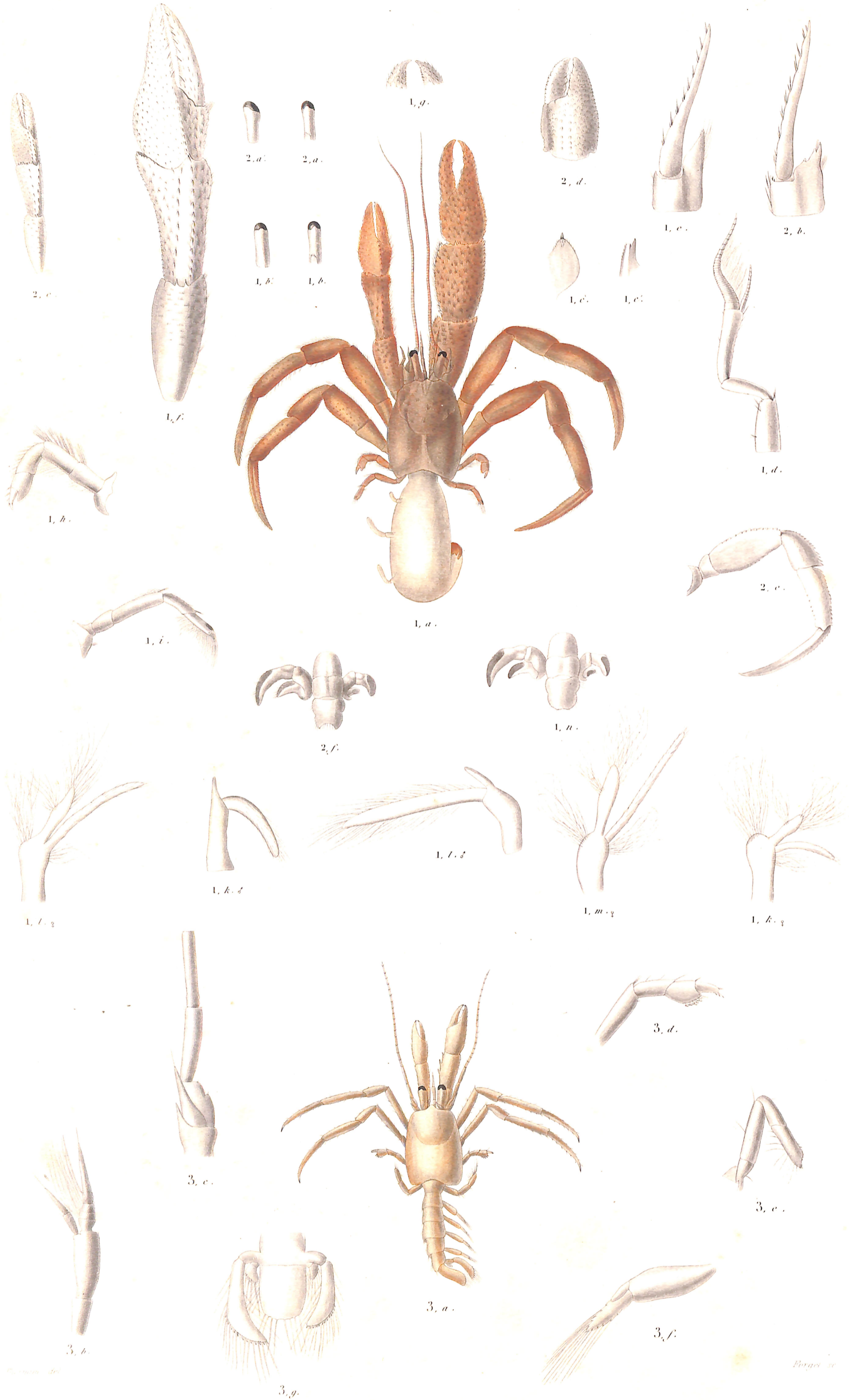


Fig. 1. a-n. *PAGURUS PUBESCENS*, Kröyer.

Fig. 2. a-f. *PAGURUS BERNHARDUS*.

Fig. 3. a-g. *PAGURUS BERNHARDUS*, Juvénis.





Fig. 1. a-p. CUMA RESIMA, Kr. Fig. 2. a-o. LEUCON NASICA, Kr. Fig. 3. a-k. CUMA LUCIFERA, Kr.





Fig. a-v. CUMA EDWARDSII, Ke. (r-r<sup>m</sup> EMBRYON, s-s<sup>2</sup> mâle)

Bourc. del.





FIG. 1. a-z. CUMA BREVIROSTRIS, Kr. nov. sp. FIG. 2. a-z. LEUCON EMARGINATUS, Kr. nov. sp. FIG. 3. a-h. LEUCON DEFORMIS, Kr. nov. sp.

Clergé. sc.





Fig. 1. a-u. CUMA RATHKII, Kr. Fig. 2. a-w. CUMA ANGULATA Kr. nov. sp.

Reproduced from the original plate.





Fig. 1. *Pasipheea tarda*, Kröyer. *non sp.*

Fig. 2. *Pandalus borealis*, Kr. ♂

Fig. 3. *Pandalus annulicornis*, Leach ♀



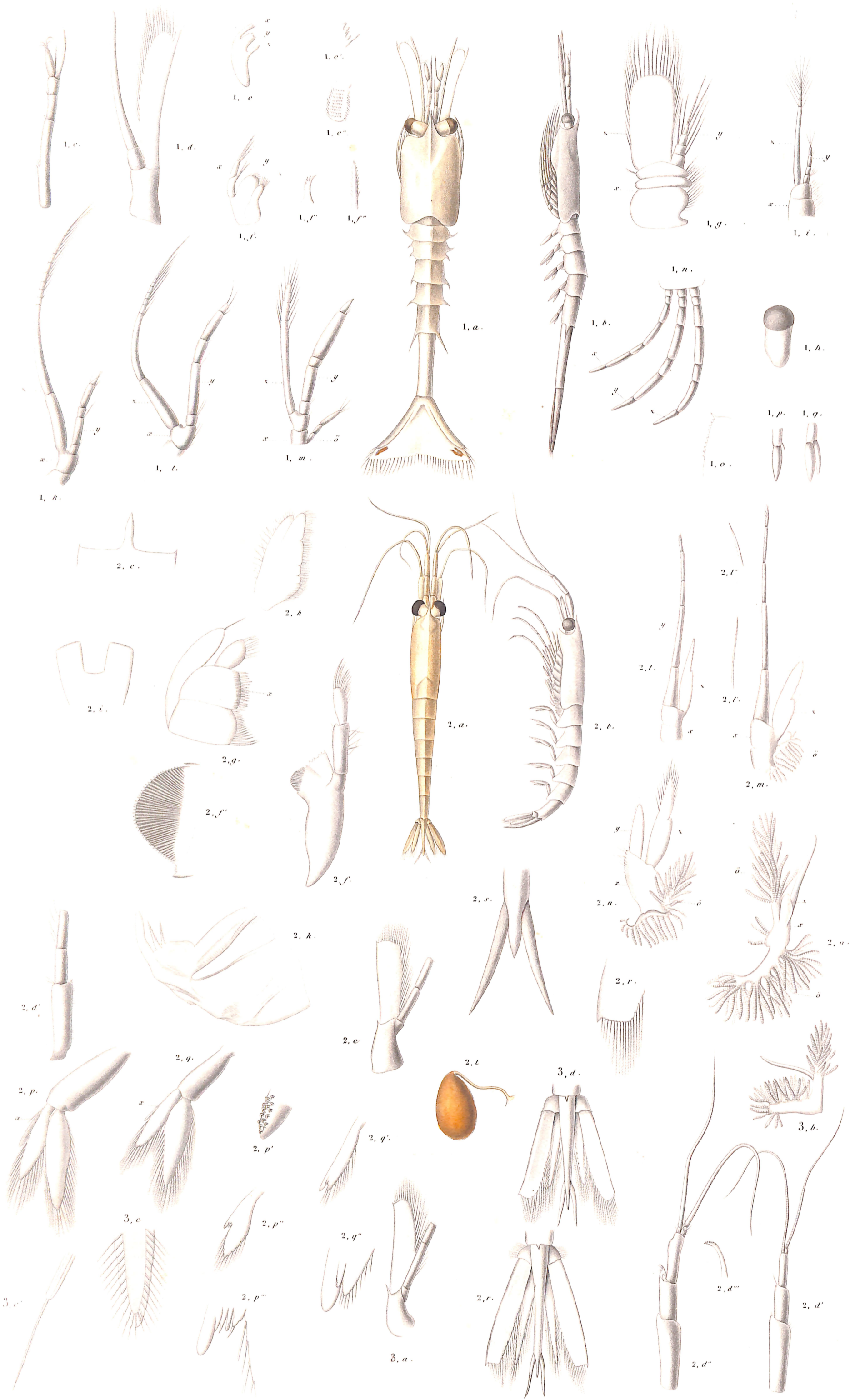


Fig. 1. a-z. MYTO GAIMARDI, Kröyer.

Fig. 2. a-z. THYSANOPODA INERMIS, Kr.

Fig. 3. a-d. THYSANOPODA NEGLECTA, Kr.

*Thomas del.*

*J. Thomas sc.*





*Boissier del.*

*J. Thomas sc.*

Fig. 1, a-z. THYSANOPODA LONGICAUDA, Kr. Fig. 2, a-z. MYSIS OCVLATA, Fabr.

Fig. 3, a-z. MYSIS OCVLATA, Junior.

*Boissier del.*

*Bouquet imp.*

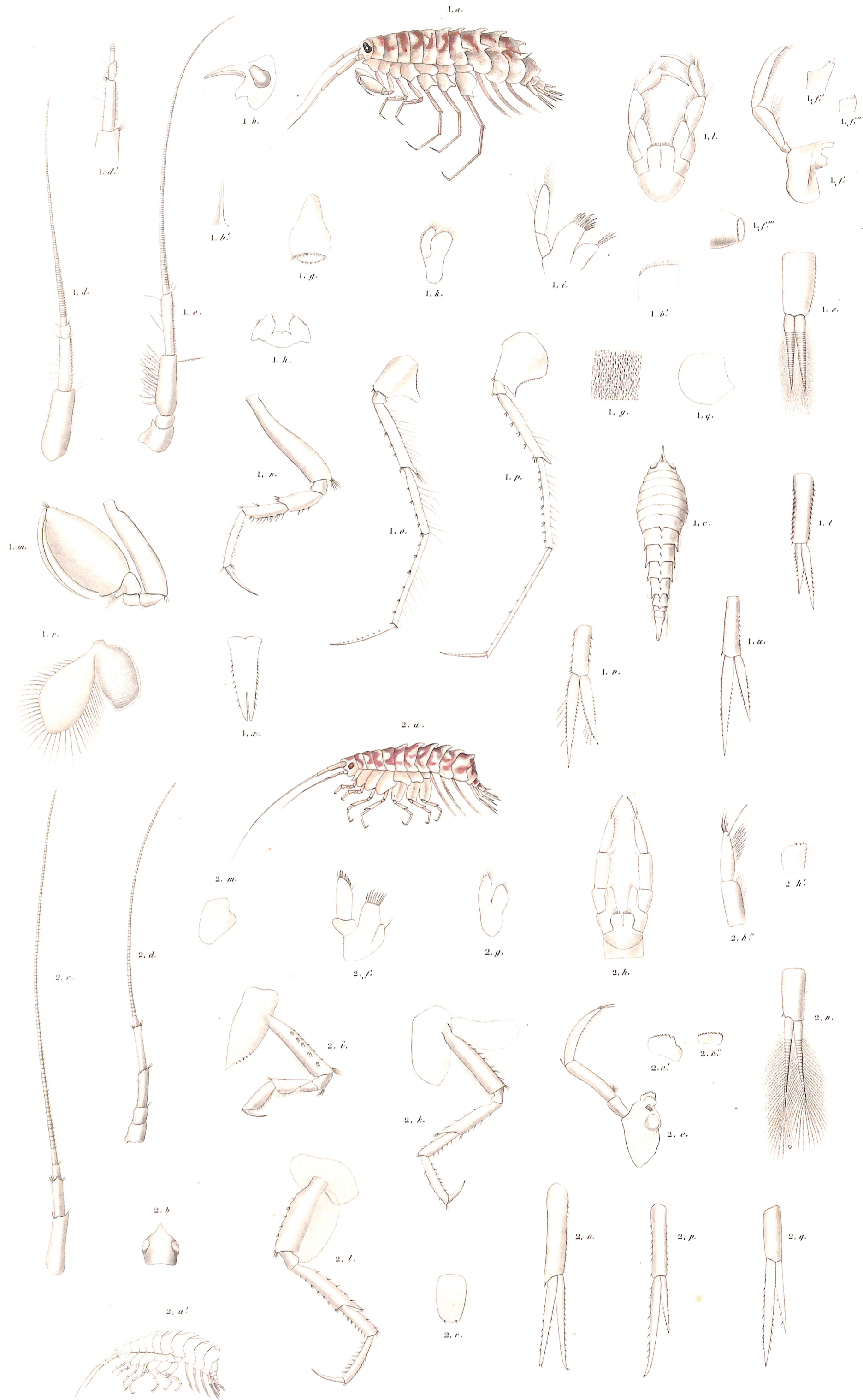




Fig. 1, a-n. MYSIS FLEXUOSA, MÜLL.

Fig. 2, a-c. et Fig. 3, a-g. EMBRYONES MYSIDIS, Flexuosa.





C. Pourcel del.

Forget sc.

Fig. 1. a-g. AMPHITOE EDWARDSII, Sab. Fig. 2. a-z. AMPHITOE PULCHELLA, Ke. sp. n.





Fig. 1. a-v. AMPHITOE CARINATA, Kr. Fig. 2. a-v. AMPHITOE PANOPLA, Kr.

*Amphitoe carinata* Kr.

*Amphitoe panopla* Kr.





Fig. 1. a. AMPHITHOE ALBOMACULATA Kr. nov. Sp. Fig. 2. a. v. MICROCHELES ARMATA Kr. nov. gen. et Sp.

Thomas. sc.





J. Thomson del.

J. Thomson sc.

Fig. 1. a-z. ANONYX LITTORALIS, Kr. Ann. Øst.

Fig. 2. a-z. ANONYX AMPULLA, Phipps.





C. Bertram sc.

J. Thomas sc.

Fig. 1, a-w. ANONYX VAHLEI, Kr. ♂ et ♀

Fig. 2, a-q. ANONYX GULOSUS, Kr. nov. sp.





Fig. 1. a-z. ANONYX HOLBØLLI, Kr. nov. sp. Fig. 2. a-z. ANONYX PLAUTUS, Kr. nov. sp.

Pl. 15.

DeLongue 1874





Fig. 1. a-m. ANONYX EDWARDSII, Kr. nov. sp.

Fig. 2. a-l. ANONYX TIMIDUS, Kr. nov. sp.

Douglas sculp.





Fig. 1. a-s. OPIS TYPICA Kr.

Fig. 2. a-o. ANONYX NANUS, Kr. nov. sp.

J. Thomsen del.

Scanned by





FIG. 1. a-t. ACANTHONOTUS TRICUSPIS, Ke. nov. sp. FIG. 2. a-t. ANONIX MINUTUS, Ke. nov. sp.





Fig. 1. a-m. GLAUCOME LEUCOPIS, *kr. nov. sp.* Fig. 2. a-o. EUSIRUS CUSPIDATUS, *kr. nov. gen. sp.* Fig. 3. a-g. EGINA (L.) LONGISPINA, *kr. nov. sp.*





Fig. 1. a-t. SIPHONOCETES TYPICUS. Kr. nov. gen. et sp.

Fig. 2. a-t. STEGOCEPHALUS INFLATUS. Kr.

J. Thomson sc.



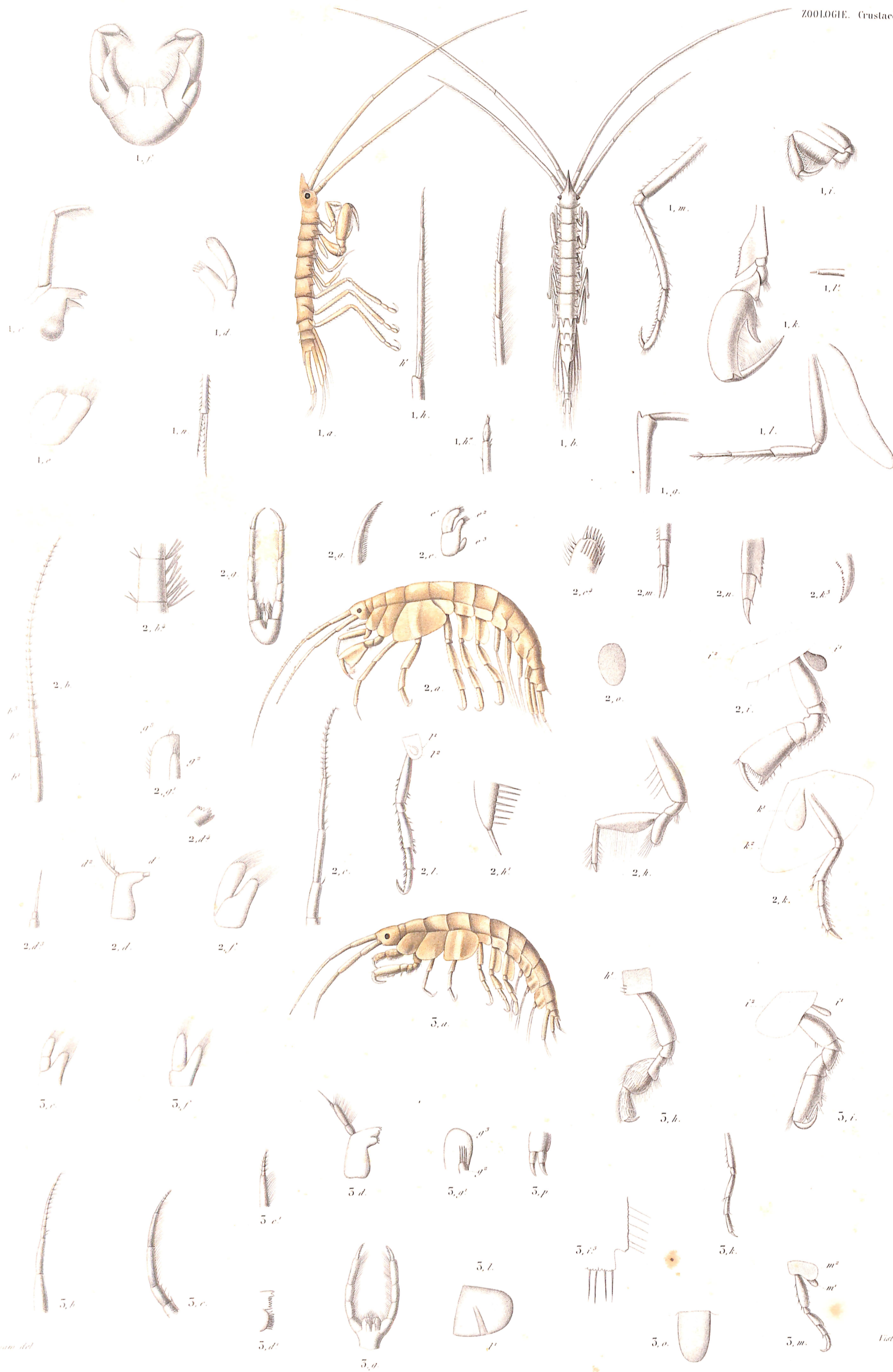


Fig. 1. *DELICHTIA SPINOSISSIMA*, Krøyer.

Fig. 2. *LEUCOTHOE CLYPEATA*, Kr.

Fig. 3. *LEUCOTHOE GLACIALIS*, Kr.





Fig. 1, a-g. AMPELISIA GAIMARDII, Kr. nov. sp. Fig. 2, a-g. PONTOPOREIA FEMORATA, Kr.





Fig. 1. a-b. CAPRELLA HYSTRIX, Kr.

Fig. 2. a-t. CERCOPS HOLBÖLLI, Kr.

Fig. 3. a-t. AEGINA LONGICORNIS, Kr.





Fig. 1. a-l. PODALIRIUS TYPICUS. Kr.

Fig. 2. a-l. CAPRELLA SEPTENTRIONALIS. Kr.

Fig. 3. a-l. CAPRELLA LOBOTA. Müll. ♂, ♀ et Var.





Fig. 1. a-p. IDOTHEA SENLINA. Kr. nov. sp. Fig. 2. a-p. IDOTHEA NODULOSA. Kr. nov. sp. Fig. 3. a-p. IDOTHEA ROBUSTA. Kr. nov. sp.

Scop. 1801



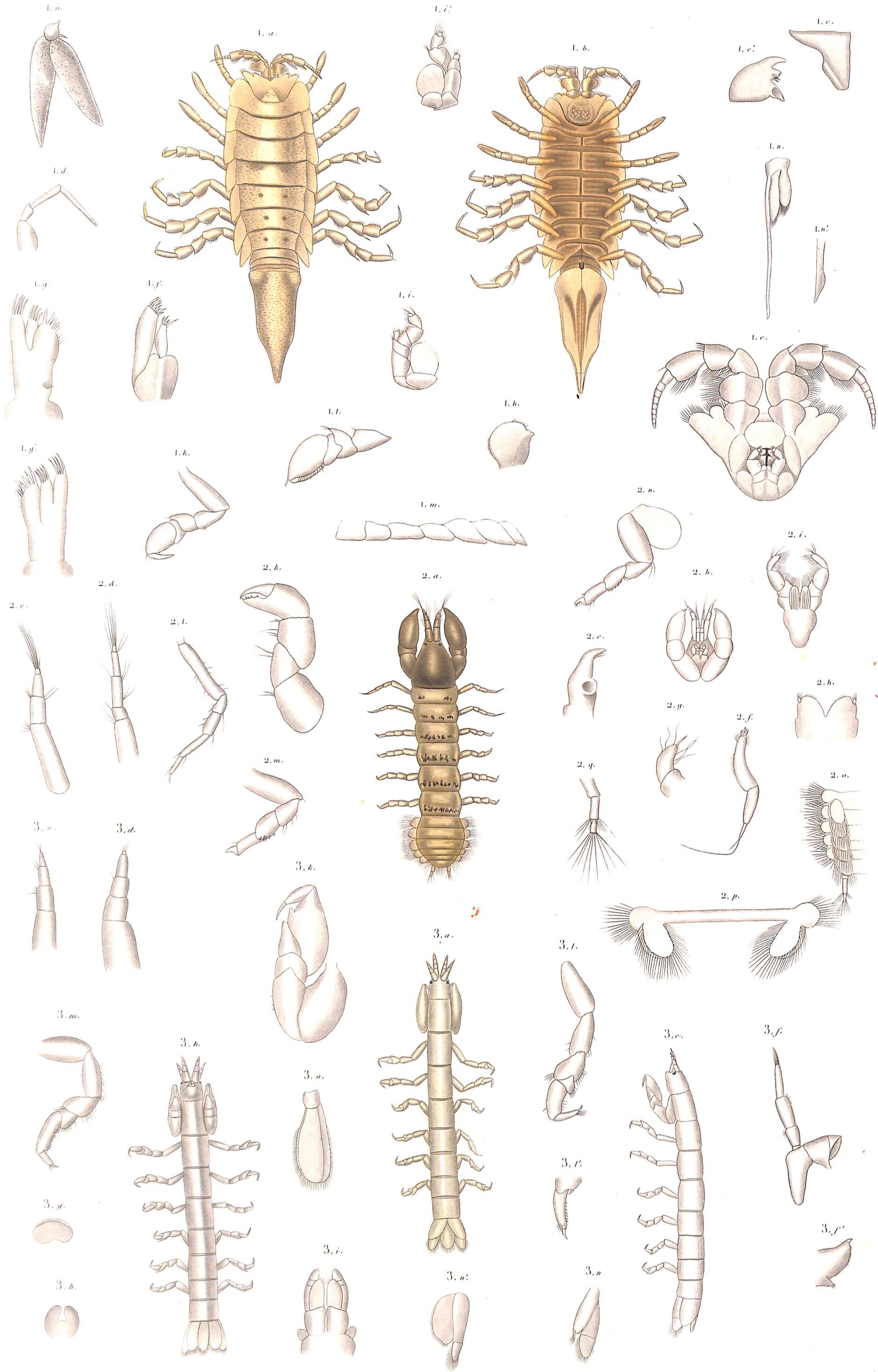


Fig. 1. a-g. IDOTHEA SABINI, Kr. n. sp. à magn. natur. Fig. 2. a-g. TANAIIS TOMENTOSUS, Kr. Fig. 3. a-o. ANTHURA CARINATA, Kr. n. sp.

Clap.

Scapard. 1839.





Fig. 1, A-B. *DAJUS* *MYSIDIS*, Kröyer. ♂ et ♀ — Fig. 2, a-p. *BOPYRUS* *HIPPOLYTES*, Kr. ♂ et ♀ — Fig. 3, a-e. *BOPYRUS* *BERNHARDI*, Kröyer ♀.

J. Thomas sc.





Fig. 1, a-z. BOPYRUS ABDOMINALIS, Kröyer.

Fig. 2, a-d. BOPYRUS FOLIOSUS, Kr.

Plat. 29.

Benard, imp.



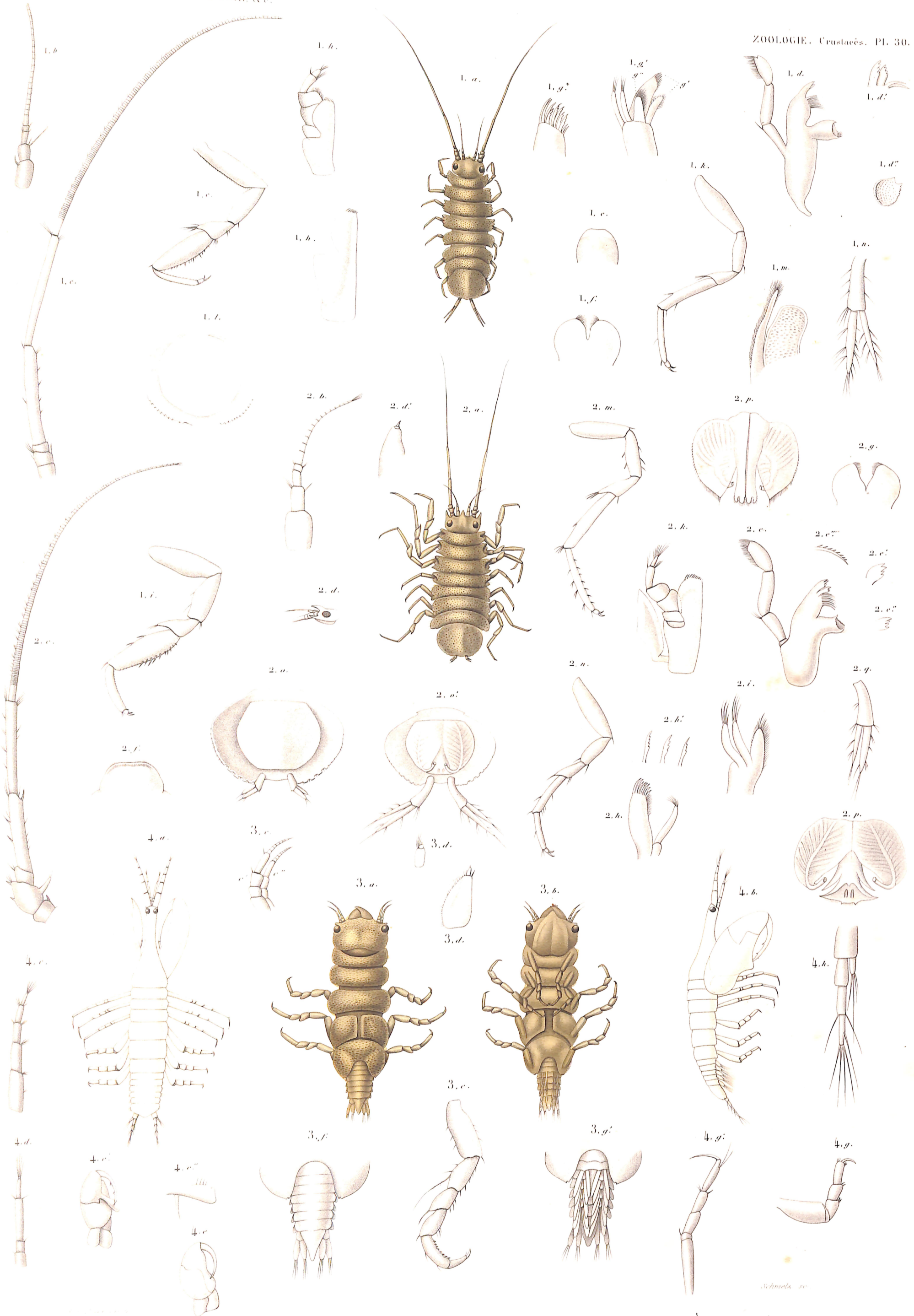


Fig. 1. *a-n*. HENOMOPUS MUTICUS. Kr. *n*. sp. Fig. 2. *a-g*. HENOMOPUS TRICORNIS. Kr. *n*. sp. Fig. 3. *a-g*. ANCEUS ELONGATUS. Kr. *n*. sp.  
 Fig. 4. *a-h*. TANAIIS CURCULIO. Kr.

Schmiedel sc.

Boissard imp.



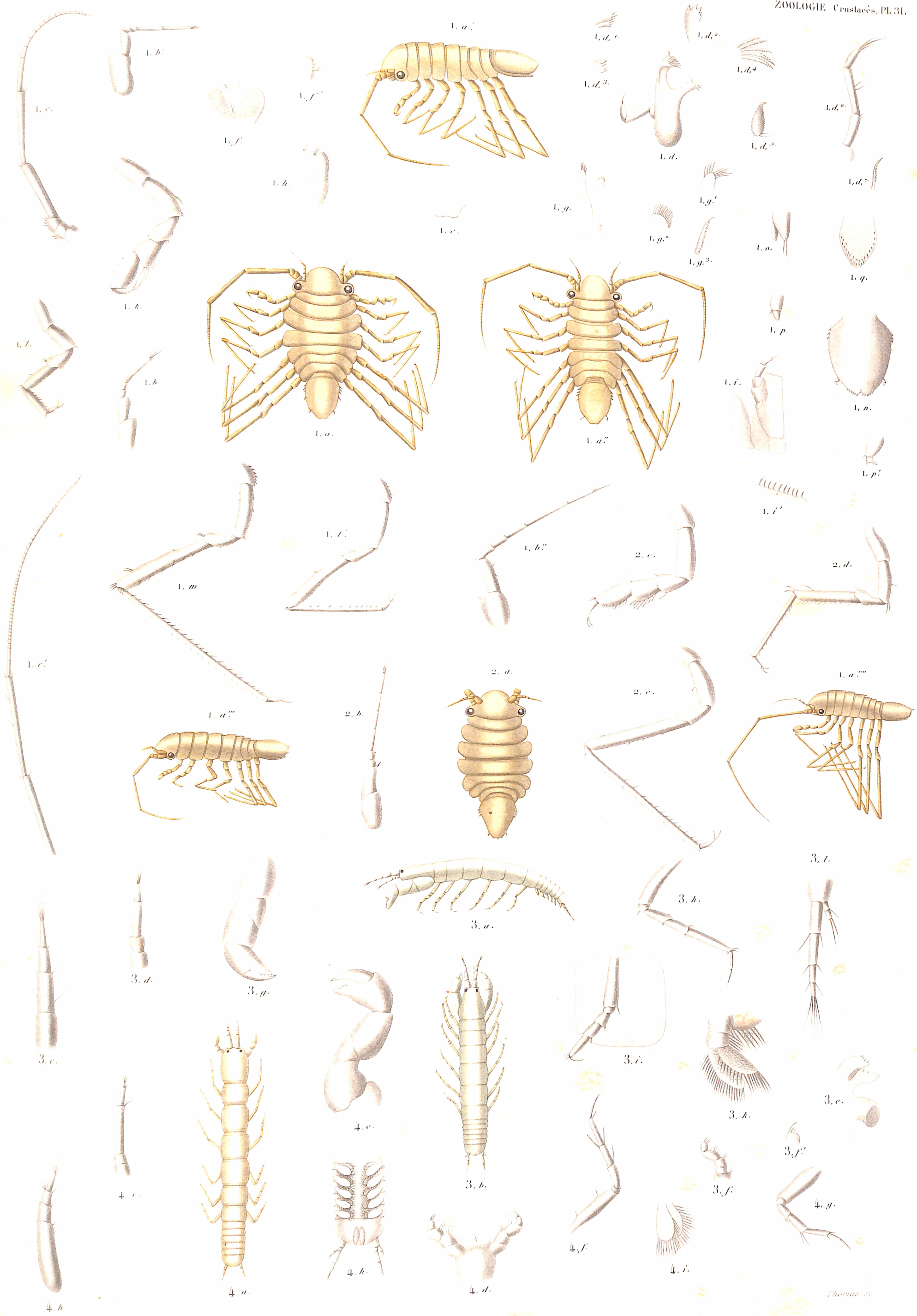


Fig. 1. a-g. MUNNA FABRICII, Ke. a. sp. Fig. 2. a-c. MUNNA BOECKII, Ke. Fig. 3. a-l. TANAÏS ÖRSTEDII, Ke.  
 Fig. 4. a-l. TANAÏS GRACILIS, Ke.

Thomae sc.  
 Douceur del.



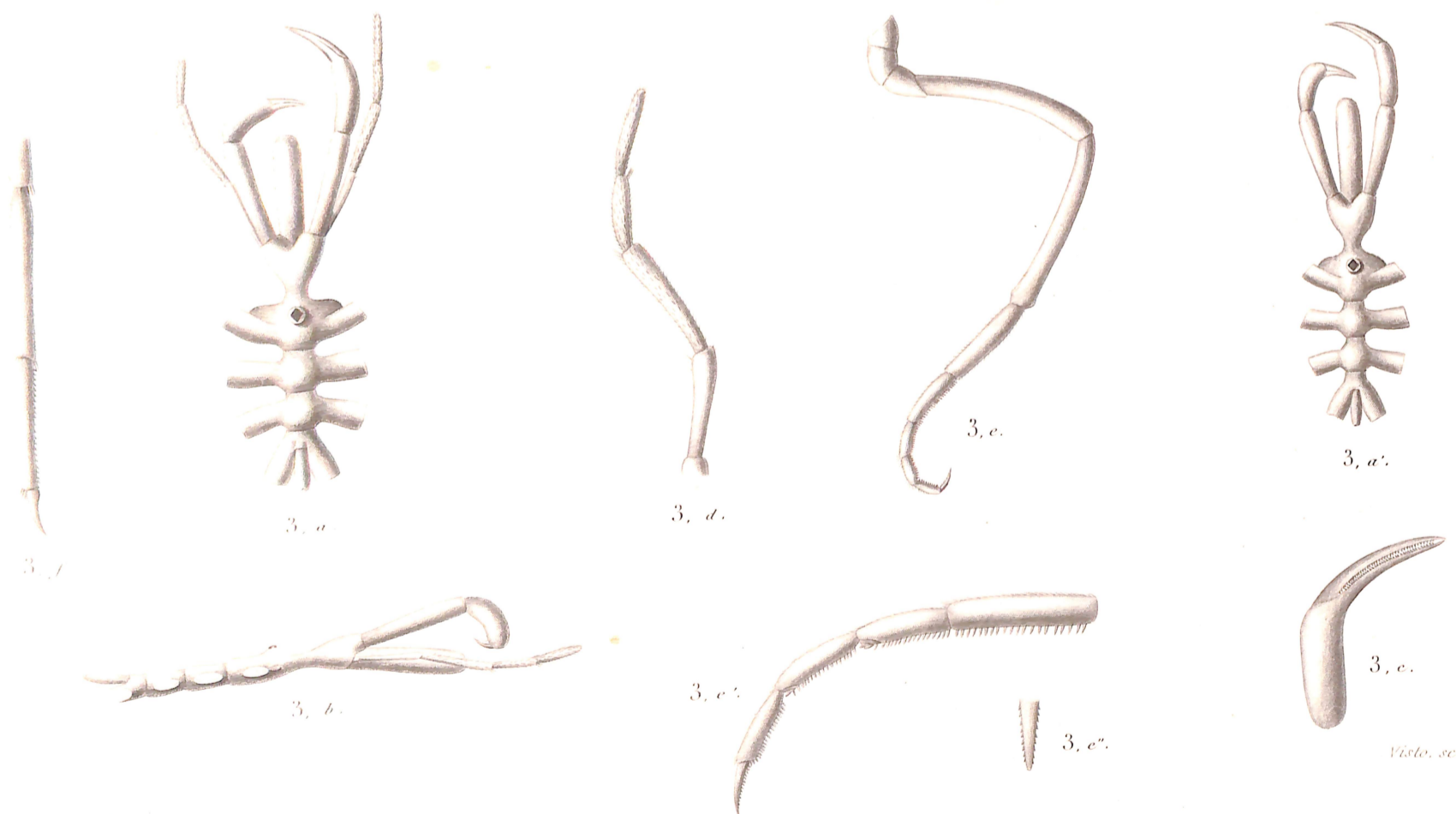
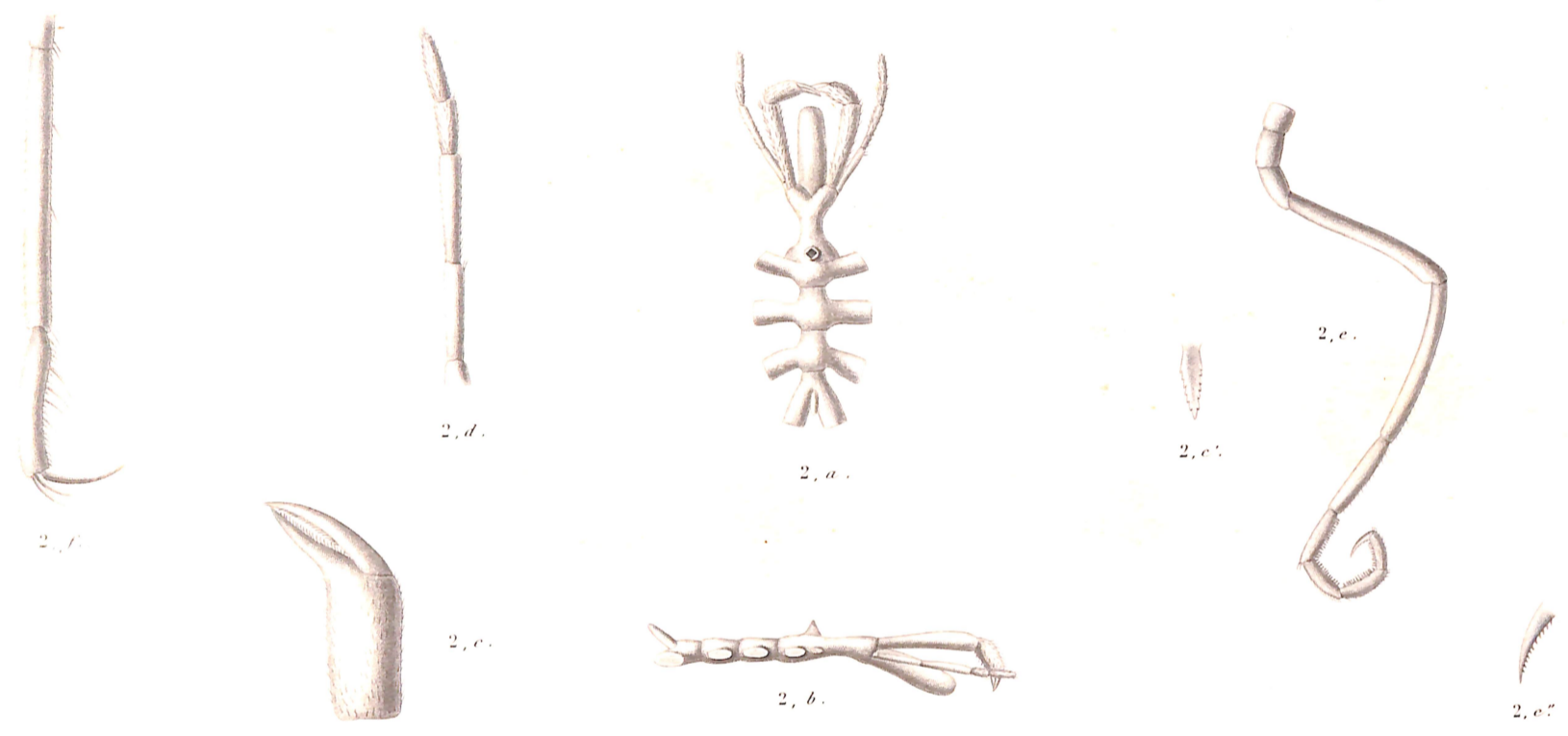
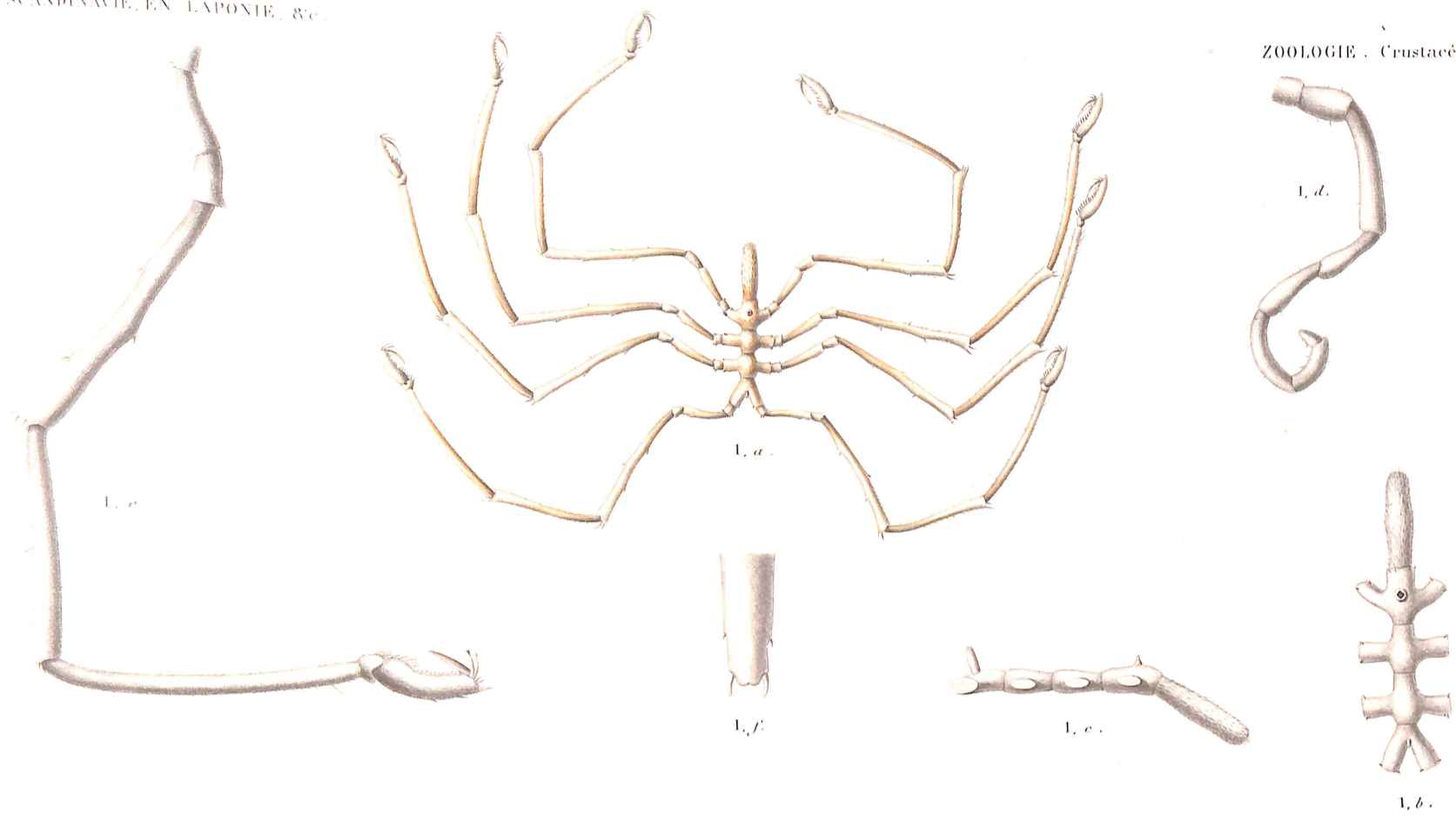


Fig. 1. a-z. PHOXICHLUS SPINOSUS.

Fig. 2. a-z. NYMPHON MIXTUM, Kr.

Fig. 3. a-z. NYMPHON STRÖMI, Kr.

Douglass imp.





Fig. 1. a-g. NYMPHON GROSSIPES. Fig. 2. a-g. NYMPHON LONGITARSE, Kr. nov. sp. Fig. 3. a-g. NYMPHON HIRTUM, O. Fabr. ?  
 Fig. 4. a-g. NYMPHON BREVITARSE, Kr. nov. sp.

*Hyale, sc.*

*Boutard, imp.*



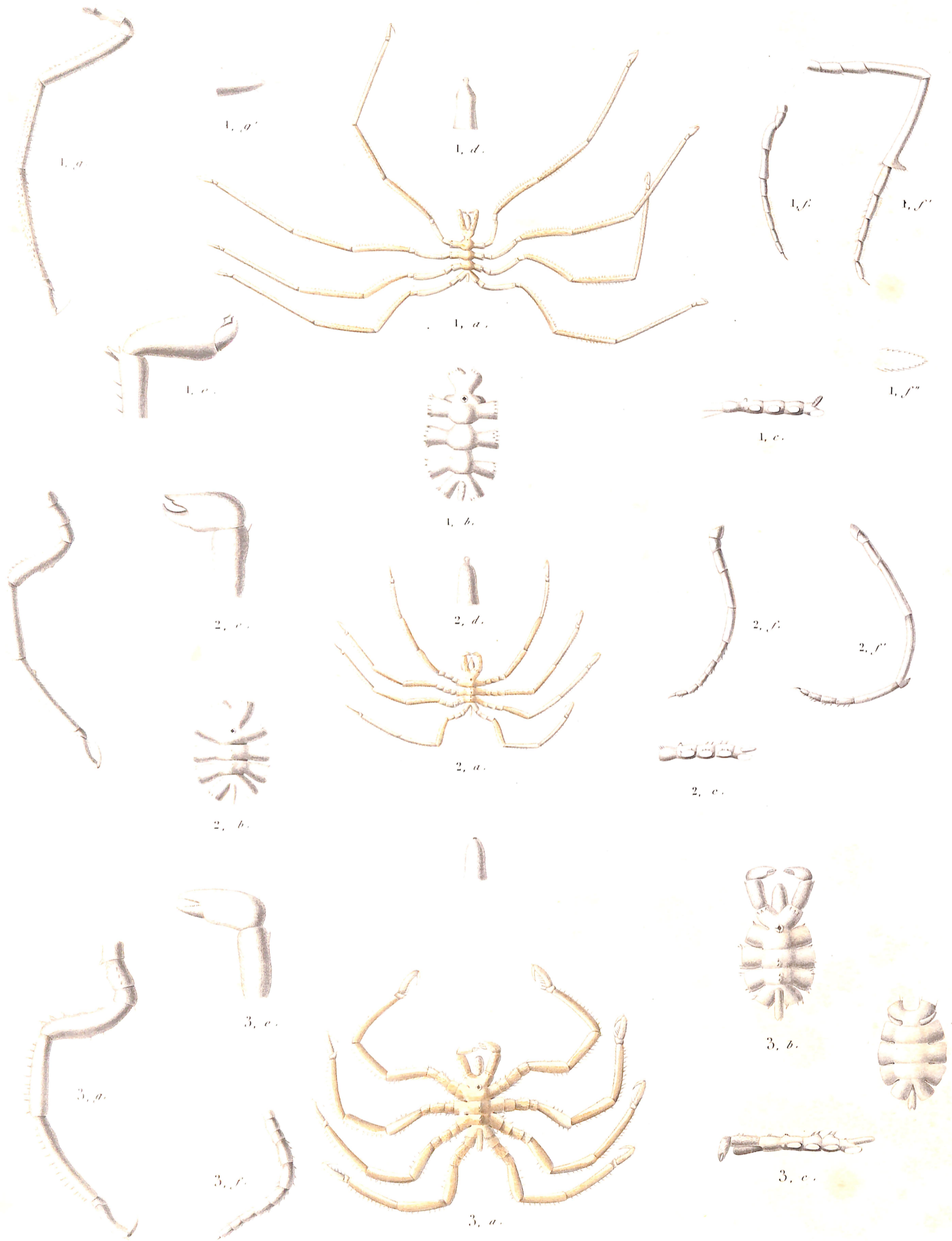


Fig. 1. a-g. PALLENE SPINIPES, O. Fabr. Fig. 2. a-g. PALLENE INTERMEDIA, Kröyer, nov. sp.  
 Fig. 3. a-g. PALLENE DISCOIDEA Kr. nov. sp.

Armedouche sc

Beugnard imp.



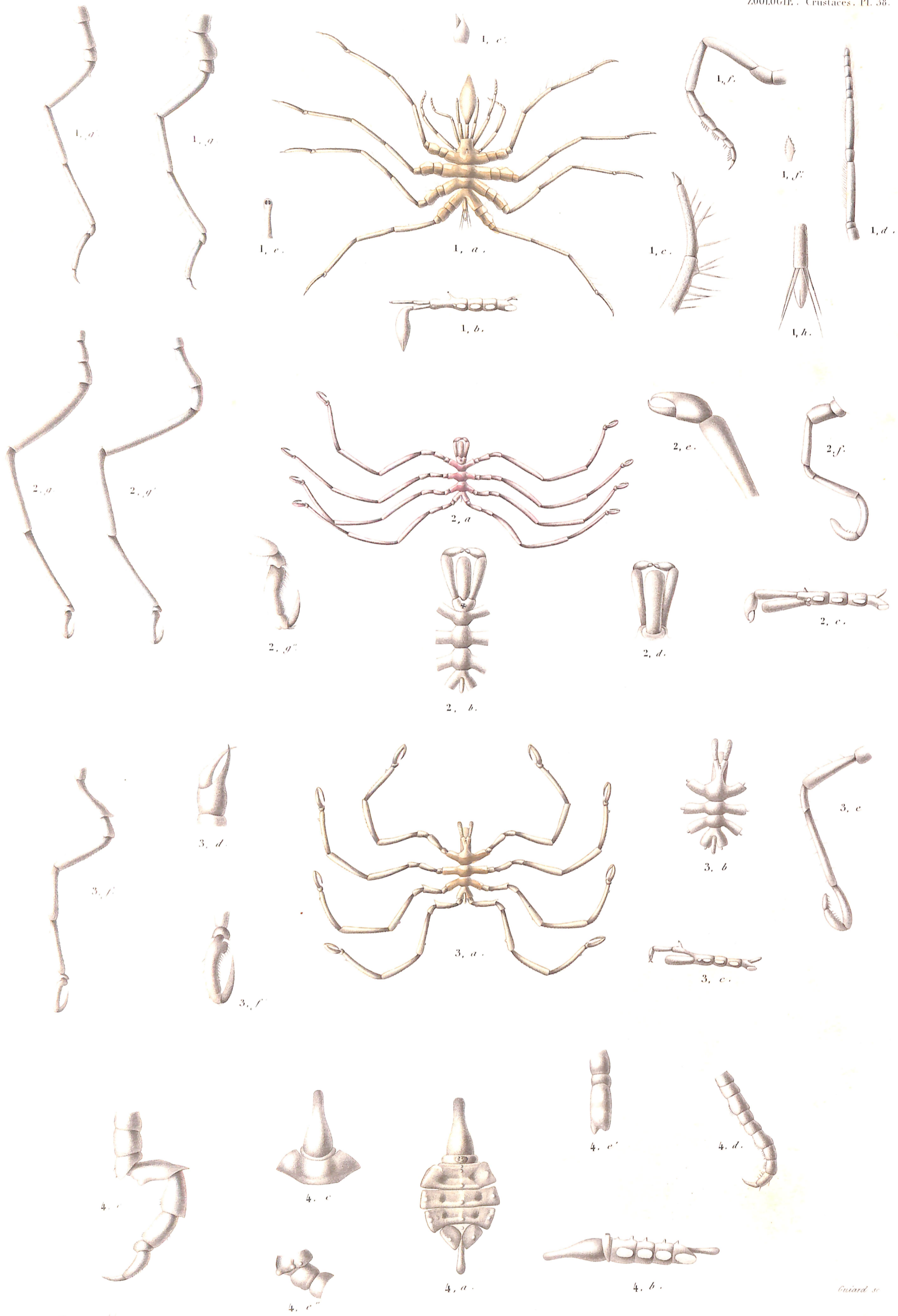


Fig. 1, a-g. ZETES HISPIDUS, Kröyer.

Fig. 2, a-g. PHOXICHLIDIUM FEMORATUM, Robk.

Fig. 4, a-e. PYCNOGONUM LITTORALE, Str.

Fig. 3, a-f. PHOXICHLIDIUM PETIOLATUM, Kr.

Gouard sc

Bougeard, imp





METAMORPHOSE DES PYCNOGONIDES

Fig. 1. a-b. NYMPHON GROSSIPES. Fig. 2. a-d. PALLENE INTERMEDIA. Fig. 3. a-b. PYCNOGONUM LITTORALE.  
 Fig. 4. a-b. NYMPHON LONGITARSE. Fig. 5. a-b. ZETES HISPIDUS. Fig. 6. PHOXICHLIDIUM FEMORATUM.

Dougeard, imp.





Fig. 1. *APUS GLACIALIS*. Kr. *n. sp.*

Fig. 2. *NEBALIA BIPES*. Fabr.





Fig. 1. *a-n*. CALANUS SPITZBERGENSIS, Ke. *n. sp.* Fig. 2. *a-g*. CALANUS HYPERBOREUS, Ke. Fig. 3. CALANUS QUINQUEANNULATUS, Ke. *n. sp.*  
 Fig. 4. CALANUS MIXTUS, Ke. *n. sp.* Fig. 5. CALANUS AFFINIS, Ke. *n. sp.* Fig. 6. *a-h*. CALANUS IRISTATUS, Ke. *n. sp.*  
 Chardon sculp.





Fig. 1. a-c. PONTIA PATERONII, Temph. Fig. 2. CALANUS CAUDATUS, Kr. nov. sp. Fig. 3. a-c. IFIONYX TYPICUS, Kr. nov. gen. et sp.  
 Fig. 4. a-c. THAUMATOESSA TYPICA, Kr. nov. gen. et sp.

Charbonneau del.





Fig. 1. *a. p.* HARPACTICUS UNIREMIS, Kr. *n. sp.* Fig. 2. *a. p.* HARPACTICUS GIBBUS, Kr. *n. sp.* Fig. 3. *a. n.* HARPACTICUS CRONII, Kr. *n. sp.*

Charbon, atlas imp.