

19-10-1909.

PROCEEDINGS

OF THE

ZOOLOGICAL SOCIETY

OF LONDON,

WITH ILLUSTRATIONS.

1848.

PRINTED FOR THE SOCIETY;
SOLD AT THEIR HOUSE IN HANOVER SQUARE,
AND BY MESSRS. LONGMAN, BROWN, GREEN, AND LONGMANS,
PATERNOSTER ROW.

HEWITSON, W. C., Esq.	page
Description of a New Species of <i>Satyridæ</i>	115
MACDONALD, Dr.	
On the Vertebral Homologies as applicable to Zoology	139
MELVILLE, Dr.	
On the Ideal Vertebra	145
OWEN, Professor.	
On the remains of the gigantic and presumed extinct Wingless or Terrestrial Birds of New Zealand	1
On a New Species of Chimpanzee	27, 53
Notes on the Anatomy of the male <i>Aurochs</i>	126
PFEIFFER, Dr. L.	
Descriptions of twenty-three New Species of <i>Vitrina</i>	104
Descriptions of twenty-nine New Species of <i>Helicina</i>	119
REEVE, LOVELL, Esq., F.L.S.	
On <i>Fastigiella</i> , a New Genus of Shells of the Lamareckian family <i>Canalifera</i>	14
Descriptions of New Species of <i>Turbo</i>	49
Description of a New Genus of Acephalous Mollusca, of the family <i>Pectinacea</i>	133
SOWERBY, G. B., Jun., Esq.	
Descriptions of some New Species of <i>Ovulum</i>	135
Descriptions of some New Species of <i>Cancellaria</i>	136
STRICKLAND, H. E., Esq., M.A.	
On the habits of a living specimen of <i>Nanina vitrinoides</i>	142
THOMASON, Hon. J.	
Letter relating to a young <i>Kiang</i>	62
TOMES, R. F., Esq.	
On the occurrence and habits of <i>Vespertilio emarginatus</i>	112
TURNER, H. N., Jun., Esq.	
Observations on some of the Foramina at the base of the Skull in <i>Mammalia</i> , and on the Classification of the Order <i>Carnivora</i>	63
WHITE, A., Esq., F.L.S.	
Description of <i>Echinocerus cibarius</i>	47
Description of two New Species of <i>Crustacea</i>	144

shell; *a b*, the portion of the foot attached to the glass; *c*, the medial portion of the foot, twisted from a vertical to a prone position.

Fig. 3 the *poma*, or deciduous operculum.

2. DESCRIPTION OF TWO NEW SPECIES OF CRUSTACEA. BY ADAM WHITE, F.L.S., ASSISTANT ZOOL. DEPT. BRIT. MUS.

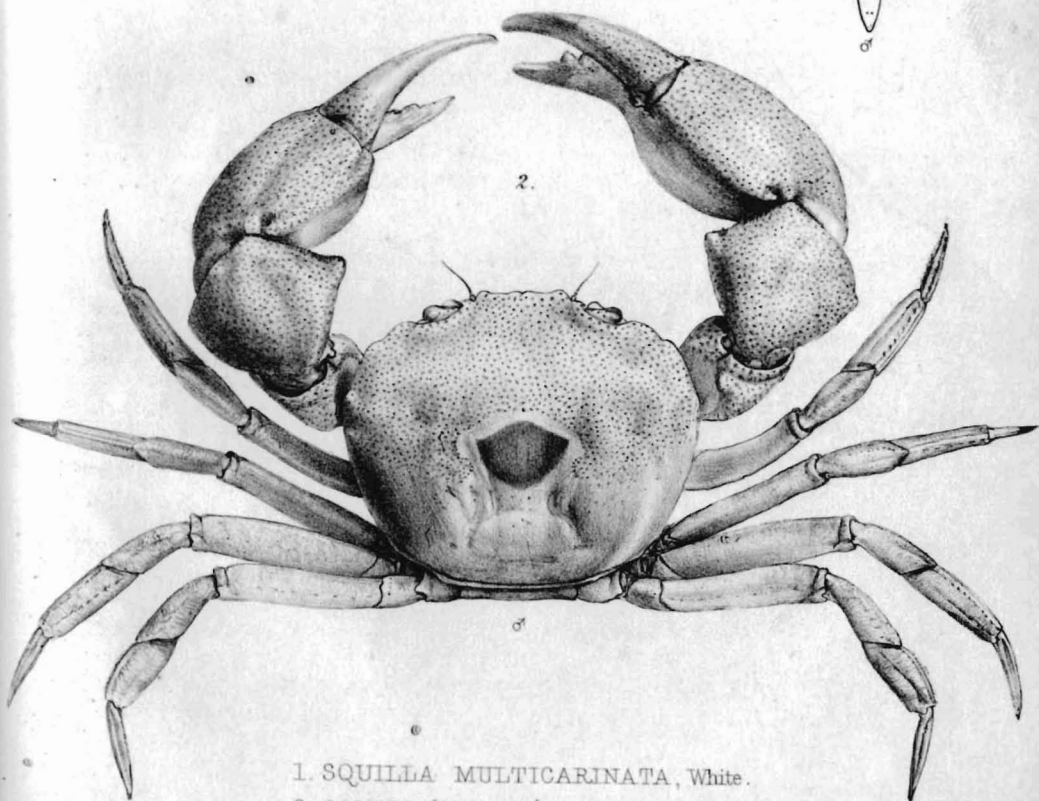
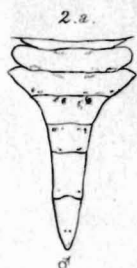
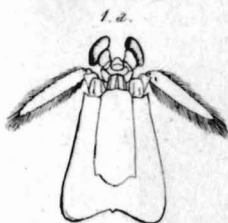
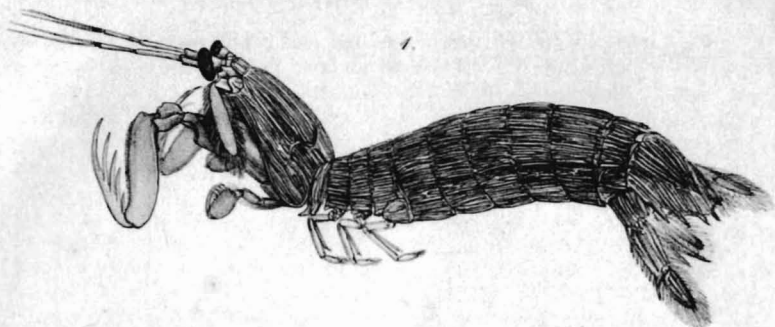
(Annulosa, pl. 6.)

CANCER (GALENE) DORSALIS, White, n. s. *C. pallidè carneus hepatico-rubris punctulis confertim sparsus, thorace macula magna hepaticâ dorsali, mediâ, anticè angulatâ, posticè rotundatâ; thorace parte posticâ dimidiatâ immaculatâ; pedibus carneolo-suaviter variegatis; pedibus penultimis longissimis; chelis magnis, pallidis, supernè punctulis hepaticæ sparsis, subtus et infra immaculatis; fronte planâ, medio duobus tuberculis, thorace, lateribus anterioribus, tuberculis quatuor minime elevatis.*

This singularly pretty species was sent home by Mr. John MacGillivray, the naturalist attached to Capt. Stanley's expedition: its beautiful dotted surface, the large liver-coloured mark on the middle of its carapace, and the great length of the penultimate pair of legs, as well as its semi-nodose, semi-crenate, latero-anterior edge, well determine it.

SQUILLA MULTICARINATA, White, List of Crustacea Brit. Mus. *S. thorace, et segmentis abdominalibus, multis carinis, sæpè parallelis, carinâ singulâ, posticè productâ in spinam brevem; ordinibus duobus carinarum utriusque lateris, paulò majoribus.*

This species comes in the second section of M. Edwards, and in his first subsection of it, in which the rostral plate does not cover the ophthalmic ring: the very numerous nearly parallel crests on each segment of carapace and abdomen, each crest produced slightly behind into a spine, at once indicate its distinctness from all *Squilla* with the description of which I am familiar. Two specimens were found in the Philippine Isles by Mr. Cuming (an indefatigable Fellow of this Society), and one, but a very small and badly-preserved one, was obtained on the voyage of H.M.S. Samarang, in Nangasaki Bay in the Eastern Seas.



1. *SQUILLA MULTICARINATA*, White.
2. *CANCER (GALENE) DORSALIS*, White.