

POECILOSTOMATOIDA

CHONDRACANTHIDAE EDWARDS, 1840 ①

- KABATA 1988: 85, 88-90, KEY & DIAGNOSIS - FOR GENERA IN CANADA.
- NERESHEIMER 1909b: 83
- HO & DOJIRI 1987b: 617-, NEW GENUS, MECADEROCHONDRIA, IN SUBFAM. CHONDRACANTHINAE
- HO & DOJIRI 1988: 280-, LAGOCHONDRIA, APODOCHONDRIA, NEW GENERA.
- AVDEEV & KAZATCHENKO 1986: 62-, HOIA N.G.
- DOJIRI & PERKINS 1979: 794-, AUCHENOCHONDRIA N.G.

Chondracanthidae

card 2

- Lüling 1953: 13-, diagnosis
- Ho 1970: 107-113, DIAGNOSIS ~~REMOVED~~;  
113-115, REJECTED SEVERAL GENERA;  
115-117, LIST / KEY TO GENERA
- KABATA 1992: 173-, DIAGNOSIS, KEY TO BRITISH GENERA
- Ho 1994: 505-, CHELONICHONDRIA N.G.; KEY TO  
WORLD GENERA

CHONDRAKANTHIDAE - POECILOSTOMATOIDA

CHONDRAKANTHINAE H. MILNE EDWARDS, 1840

- Ho 1970: 118 -, DIAGNOSIS, LIST OF GENERA

Chondracanthidae - ~~Hernaeopodoida~~  
~~Poecilosomatoida~~

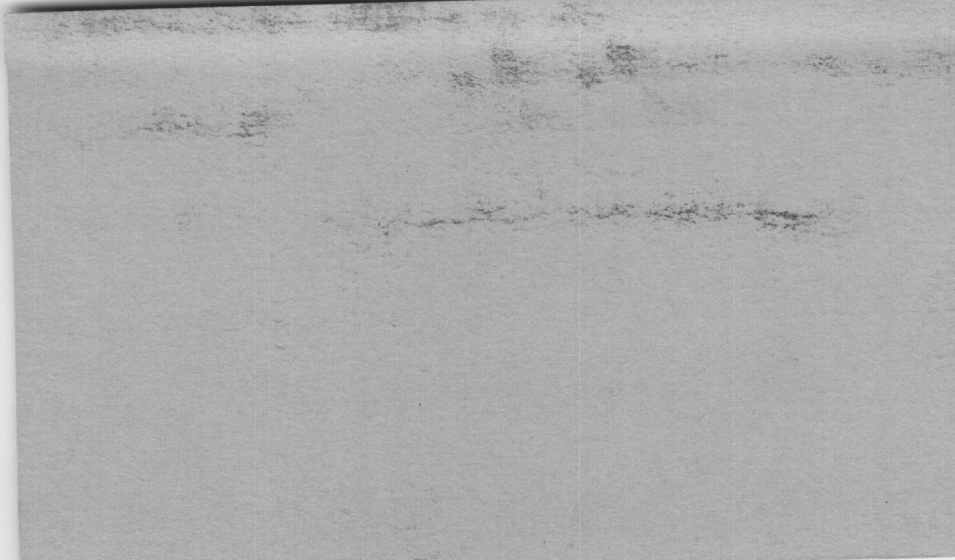
Chondranthodes. valid

Wilson 1932

(M)

C. deflexus

Syn. Chondracanthodes, Wilson, 1932, p. 506



CHONDROACANTHODES WILSON 1932

CARD 2

- KABATA 1988: 90, 92, DIAGNOSIS
- Ho 1970: 147-, DIAGNOSIS, SYNONYMY
- Ho 1994: 514

Chondracanthodes bulbosus sp. nov.

Kabata, 1965, pp. 10-12, ANTARCTIC

- Ho 1970: 148

- Ho 1994: 507

Chondracanthodes deflexus Wilson, 1932

--, Ho, 1977, p. 158

--, Ho, 1978, p. 8, 10, fig. 14

-- Ho 1970: 148-152, Figs. 99-118, MASS., CALIF., USA,  
HOST LIST, SYNONYMY



Chondracanthidae - Ternaeopodoida

Chondracanthodes deflexus Wilson ♂♀.

— — Oakley, 1930, p. 199.

— — Wilson, 1931, p.

— — Wilson, 1932, p. 506 : pl. 38.

— —, Ho, 1971, p. 2 Key

— —, Ho, 1975, p. 359, 361

Host. Gills of Macrourus bairdii.

— — Ho 1985: 486, HOST RECORDS, NEW YORK BIGHT

— — Ho 1994: 507, FIG. 1B, EX CORYPHAENOIDES ARMATUS,  
OFF HONSHU Woods Hole.

Chondracanthodes dogeli

-- -- Nabata, 1966, p. 179

Chondracanthodes lotellae - see Chondracanthus

Chondracanthus<sup>ODES</sup> radiatus, (Müller) ♀. ①  
Chondracanthidae.

Lernaea radiata, Müller, 1776, pl. XXXVIII, fig. 3, 4.  
— —, Fabricius, 1780, p. 340. 1779, p. 78: pl. 33, fig. 4

Entomoda —, Lamarck, 1818, p. 223.

Lernentoma —, Blainville, 1823, p. 124.

Chondracanthus r —, Cuvier, 1830, p. 258.

Host. Gills of Coryphaena [Macrurus] rupestris

-- Ho 1991: 54

Greenland.

Ch. —, Kröyer, 1837, p. 196.

— —, —, 1863, p. 251; pl. XIV, fig. 1a-7.

— —, Lutken, 1845, p. 162.

— —, B. Smith, 1899, p. 494.

— —, Scott & Thompson, 1900, p. 143

(Corrected to *C. merluccii* in A. Scott, 1901, a.)  
(p. 352, foot-note)

*Lernaeontoma radiata*, Blainville, 1822, p. 440,

— —, Brian, 1908, p. 17.

Schisturus radiatus, Oken, 1816, p. 183.

Anops —, idem, p. 358.

CHONDRACANTHODES RADIATUS (MÜLLER 1776) ②

LERNAEA RADIATA, MÜLLER 1776: No. 2748

L. -, MÜLLER 1777: pl. 33, FIG. 4

ANOPS RADIATUS, OKEN 1815-16, p. 358 N. COMB

ENTOMODA RADIATA, LAMARCK 1818: 223

LERNENTOMA RADIATA, BLAINVILLE 1822: 440

CHONDRACANTHUS RADIATUS, BRIAN 1912: 34, pl. 5 FIGS. 6 & 7;  
pl. 11 FIGS. 1 & 2

CHONDRACANTHUS RADIATUS, STEPHENSEN 1913: 341

CHONDRACANTHUS RADIATUS, WILSON 1920: 6 L.

*Chondracanthodes radiatus* (Müller<sup>O.F.</sup> 1776) ③

GIVES SYNONYMY

GREENLAND, W.

-- Ho, Ju-Shay, 1971, p. 15-17, Fig 11, ATLANTIC

-- Ho 1975: 311-312, FIG. 7

-- KABATA 1988: 97, FIG. 396, HOST RECORDS

-- Ho 1985: 486-487, HOST RECORDS, NEW YORK BIGHT

CHONDRACANTHUS RADIATUS, HANSEN 1923: 45, PL. 3 FIGS. 6a-e

-- Ho 1970: 148-

CHONDRACANTHODES-, Ho 1994: 507

CHONDRACANTHODES-, Ho 1991: 55, TAB. 1; 54.

Chondracanthidae-Lernaeopodoi

Chondracanthodes rickettsi Wilson

Wilson 1935, Pacific Coast, pp. 787-789, pl. 2  
figs. 69-73; pl. 30, figs. 79-84. ♀ ♂

SYN OF C. DEFLEXUS

-- Ho 1970: 148-, SYN. OF C. DEFLEXUS, NEW  
SYNONYMY



Chondracanthodes tuberofurcatus Kabata & Gusev, 1966

-- Kabata 1966: 175

-- Ho 1970: 148

-- Ho 1994: 507