

Usarpnema auriculatum n. sp.

Fig. 6A-D

Holotype male. $L = 1.16$ mm; $mbd = 200$ μ m (flattened); $t = 90$ μ m; $cs = 22$ μ m; ssl (subdorsal) = 32 μ m; and ts (subdorsal) = 45 μ m.

Female juvenile. $L = 1.15$ mm; $mbd = 150$ μ m; $cs = 22$ μ m; $ts = 42$ μ m; and $hd = 55 \times 22$ μ m.

Description. Body composed of about 90-95 rings; some rings irregular or anastomosing. Distance from center to center of adjacent rings, 15 μ m. Rings bearing wartlike projections 3 μ m long at anterior, changing to short projecting spines toward posterior and merging to form irregular shelflike scales in extreme posterior. Rings more irregular and scalelike on dorsal side in anterior of body. Interzones between rings with several vague annules, more conspicuous in female. Cuticle 5 μ m thick. Head shallow, truncate at anterior. Cephalic setae borne on large globular bases, 22 μ m in diameter. Amphids large, thick-walled, covering remainder of head between setal bases. Cephalic setae thick, hollow, narrowly open at tip. Somatic setae thick, hollow; secretion outside tip of open subventral setae. Subventral setae much shorter than subdorsal; 17-22 subdorsal setal pairs and 9-20 subventral; subdorsal setae with lancet tip; all setae with short, clear pedunculate base; 1 pair of long subventral setae near posterior, outside last setal pair of regular rows. Small yellowish pigment spots at level of ring 3. Esophagus obscure. Intestine filled with large yellowish globules. Spicules cephalate, arcuate, with narrow tips, 87 μ m long. Gubernaculum lacking. Cloacal aperture in male transversely elliptical, circular in female juvenile and located near tail tip.

Type locality. Hut Point, 457 m.

Specimens. Holotype male: collected by R. W. Timm and D. R. Viglierchio on December 13, 1970; NMNH catalog number 50012. Paratype juvenile: same data as holotype; NMNH catalog number 50013.

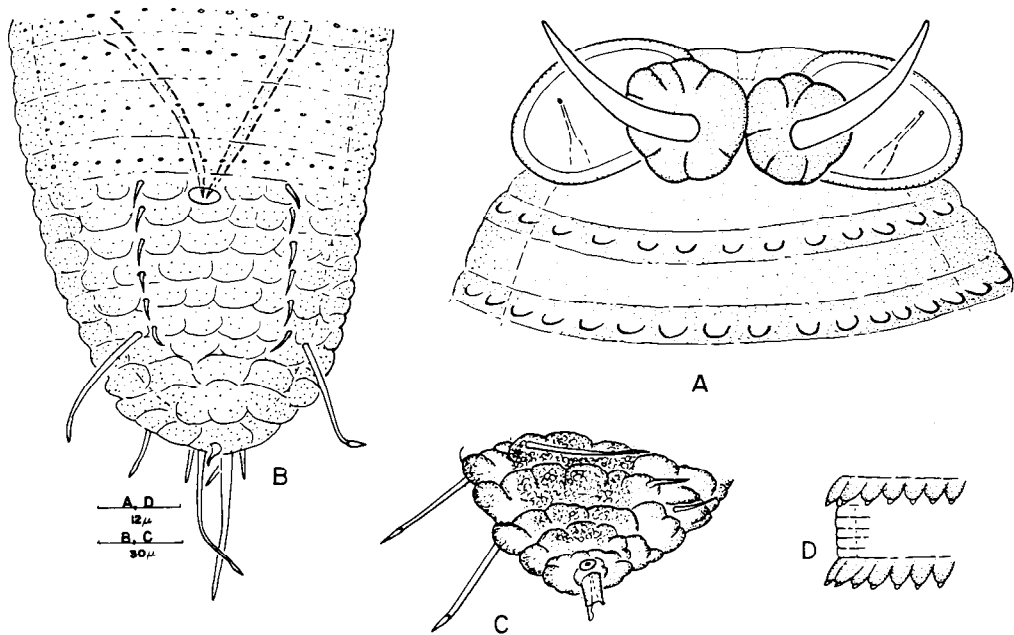


Fig. 6. *Usarpnema auriculatum* n. g., n. sp.: A, male head; B, male tail (ventral); C, female tail tip (ventral); and D, warts at midbody level.