

Tripyloides marinus (Bütschli, 1874)
(Fig. 129)

Description. Body length 1.9–2.6 mm (a = 34–45). Cuticle smooth. Six longer cephalic setae 6 μm , two-jointed; shorter four 4 μm , unjointed. Buccal cavity in *four* separate sections, fairly heavily cuticularised, posteriormost cavity with two subventral teeth. Amphids circular, 5 μm diameter, level with base of buccal cavity. Tail 4.3 a.b.d. long.

Spicules 23 μm .

Gubernaculum about the same length, similar in form to *T. gracilis*.

Distribution. Blyth estuary; Exe estuary (intertidal mud and sand).

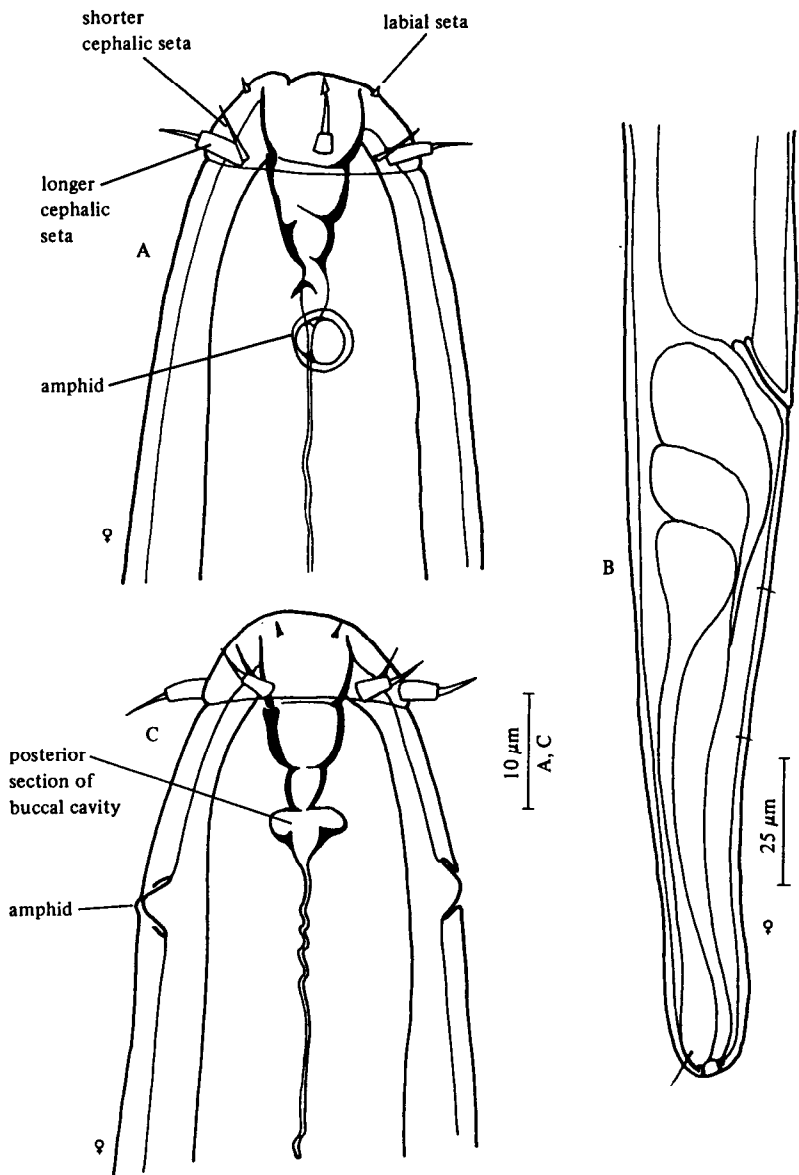


Fig. 129. *Triplooides marinus*. A, Female head (lateral); B, Female tail; C, Female head (dorsal). Original.