

Trileptium parisetum Warwick and Platt, 1973
(Fig. 64)

Description. Body length 3.8 mm. Maximum diameter 41 μm ($a = 100$). Cuticle with faint transverse striation. Labial setae 7 μm . Cephalic setae 53 and 15 μm . Male with six pairs of subcephalic setae just posterior to the cephalic capsule, 35 and 17 μm long. Female not known. Ten pairs of cervical setae more posteriorly, 36 and 12 μm long. Mandibles and onchia set well forward in buccal cavity, equal in size. Mandibles small with a solid appearance, onchia relatively large. Oesophagus cylindrical, 0.19 times body length. Tail 4 a.b.d., anterior half conical, posterior half cylindrical.

Spicules 35 μm (0.85 a.b.d.), slender.

Gubernaculum 14 μm in two halves, each terminating distally in a small plate bearing two lateral projections. Precloacal supplement 49 μm in front of cloaca.

Distribution. Loch Ewe, Scotland (intertidal sand).

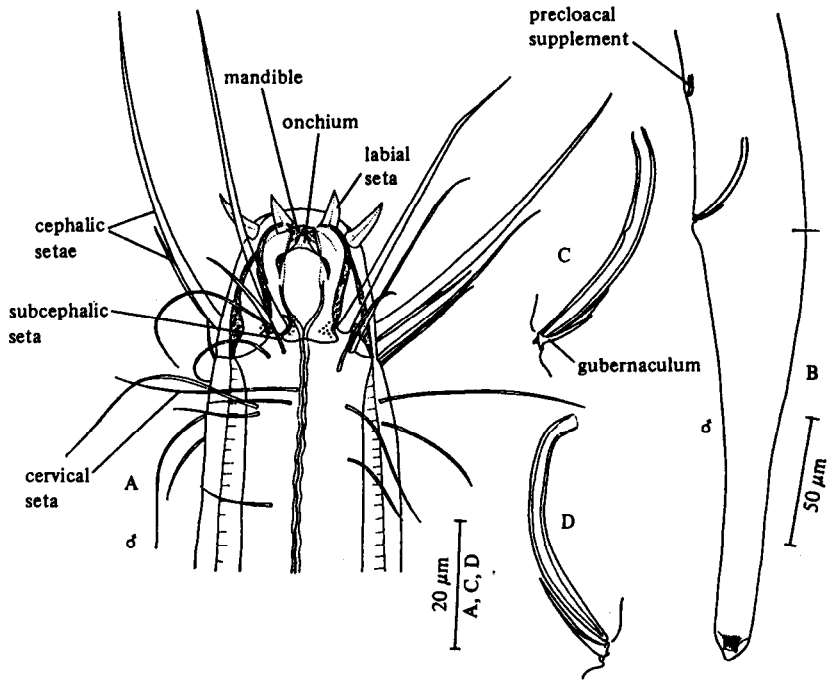


Fig. 64. *Trileptium parisetum*. A, Male head; B, Male tail; C, D, Spicules and gubernaculum of two males. Original.