

Tricoma longirostris (Southern, 1914)
(Fig. 229)

Description (from Southern, 1914). Body-length 0.7 mm. Maximum diameter 39 μm ($a = 17$). 70 desmen. Cephalic setae 1.0 h.d. Head wedge-shaped, as long as broad, with thickened cuticular walls.

Spicules curved, cloaca between desmen 60 and 61.

Distribution. Clew Bay, West Ireland, two males (sublittoral sand and shells).

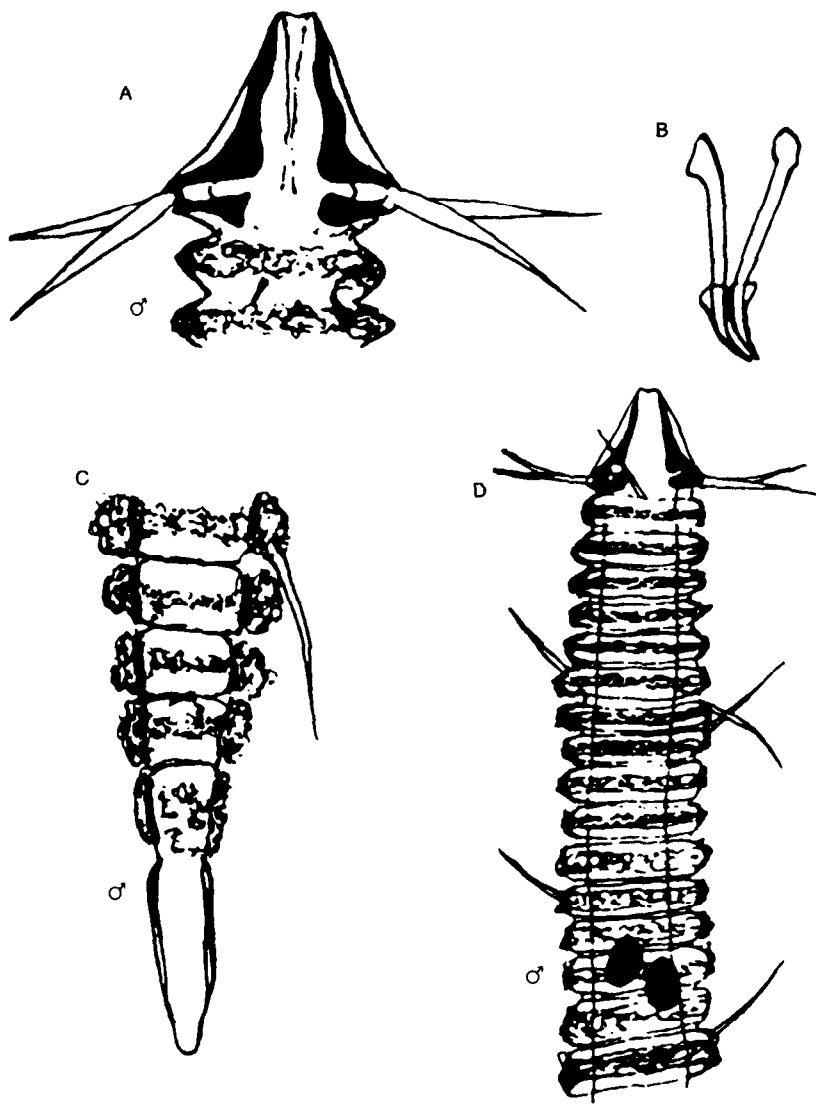


Fig. 229. *Tricoma longirostris*. A, Male head; B, Spicules and gubernaculum; C, Male tail tip; D, Anterior end of male. From Southern (1914).