

Thoracostomopsis doveae Warwick, 1970
(Fig. 63)

Description. Body length 5.4–5.5 mm. Maximum diameter 84–90 μm ($a = 61$ – 64). Cuticle with fine, faint transverse striation. Lips not strongly separated as in other members of Thoracostomopsidae. Labial setae 6–7 μm . Six longer cephalic setae 38–40 μm (2.1 h.d.); shorter four 8 μm (males), but relatively longer in juveniles. Male with a series of long slender cervical setae just posterior to cephalic capsule. Onchial spear-like structure jointed, anterior section 58 μm , posterior 34 μm , accommodated in anterior end of oesophagus. Three mandibles surround onchia at anterior end, each with a single median apophysis in addition to the lateral rods. Six posterior lobes of cephalic capsule irregular in shape, with pronounced punctations. Oesophagus more or less cylindrical, 0.13 times body length. Tail 3.1–3.4 a.b.d.

Spicules 100–103 μm , slender, cephalic proximally.

No gubernaculum. Tubular precloacal supplement level with spicule ends.

Distribution. North East England (*Laminaria* holdfasts).

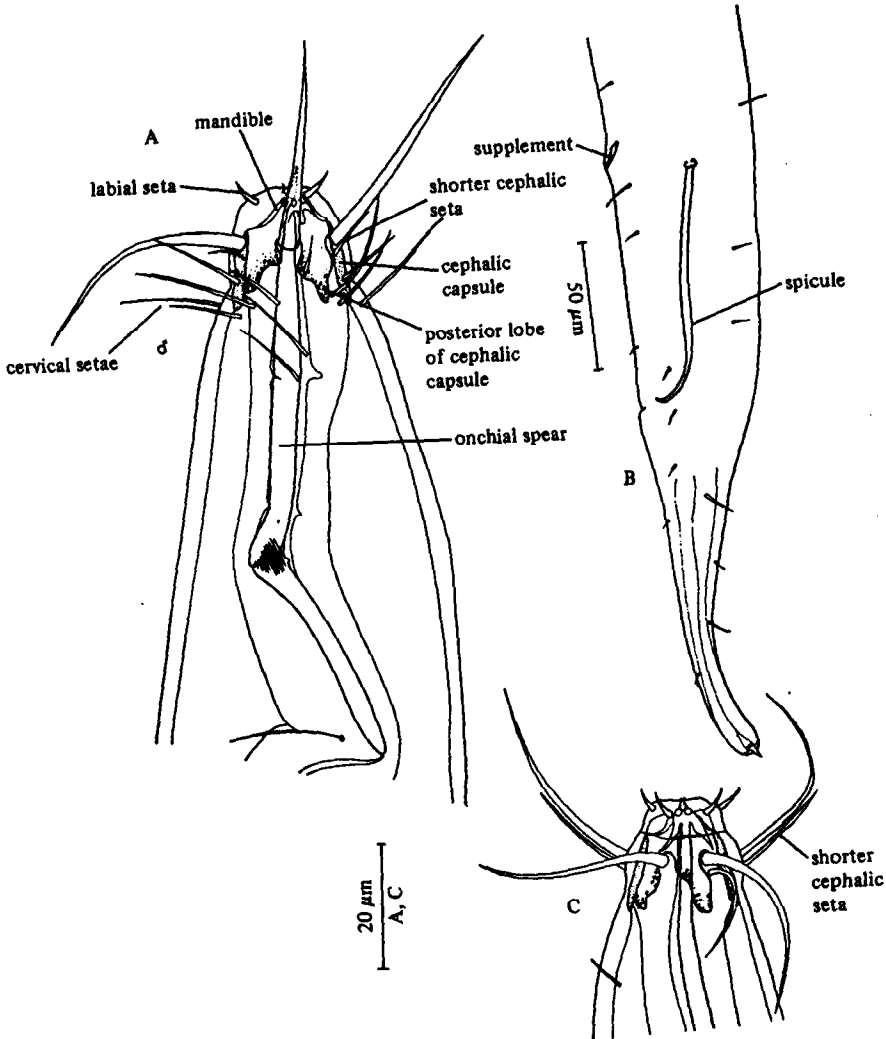


Fig. 63. *Thoracostomopsis doveae*. A, Male head; B, Male tail; C, Juvenile head. Original.