

Synonchus longisetosus (Southern, 1914)
(Fig. 83)

Description. Body length, male 17.1 mm. Maximum diameter 140 μ m (a = 122). Ten cephalic setae, about 45 μ m (0.5 h.d.). Numerous somatic setae arranged in six rows between head and nerve ring. Buccal cavity similar to *S. fasciculatus*. Amphids about 0.36 times c.d. Tail short, conical with bulbous tip.

Spicules about 180 μ m. Precloacal ventral supplement level with the middle of the spicules. Two subventral files of setae posterior and anterior to cloaca. Two subventral rows of papillae anterior to supplement.

Distribution. Clew Bay, West Ireland (sublittoral, sand bottom); Northumberland (kelp holdfasts).

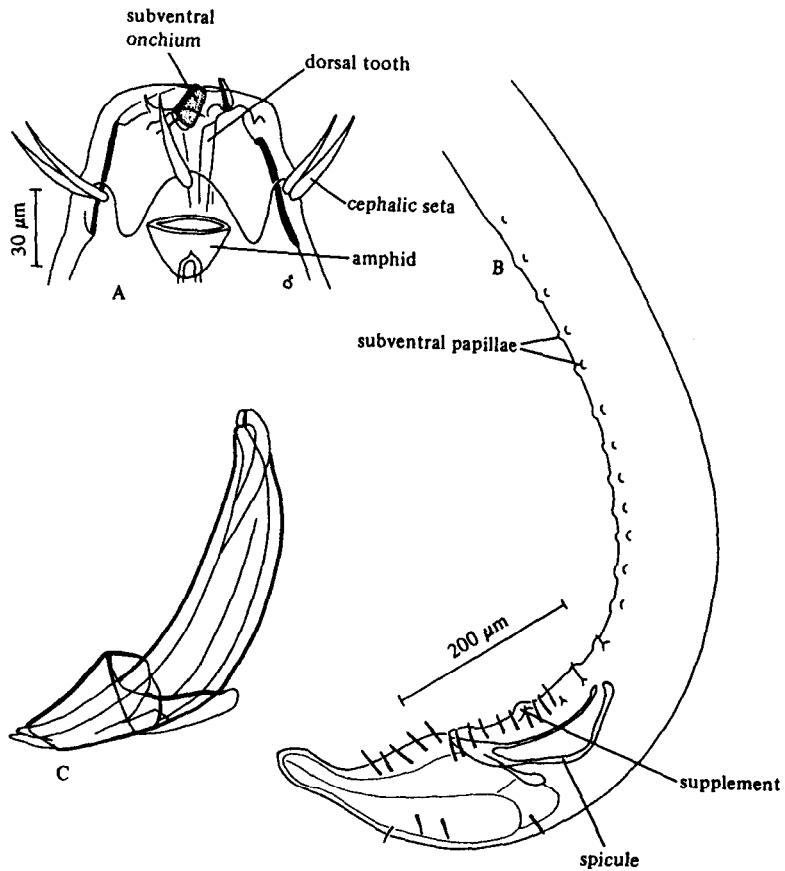


Fig. 83. *Synonchus longisetosus*. A, Male head; B, Male tail; C, Spicules and gubernaculum (from Southern, 1914).