

*Synonchus brevisetosus* (Southern, 1914)  
(Fig. 82)

*Description.* Body length, male 13.4 mm, female 16.0 mm. Maximum diameter, male 290  $\mu\text{m}$ , female 280  $\mu\text{m}$  ( $a = 46.2$  and  $57.0$ ). Six labial papillae. Ten cephalic setae about 0.15–0.2 h.d. long. Short somatic setae present only anterior to nerve ring. In female from Isles of Scilly lateral setae posterior to amphids appear flattened (Fig. 82A). Buccal cavity similar to *S. fasciculatus*. Amphids 0.13–0.20 times c.d. Tail conico-cylindrical with bulbous tip.

Spicules 168  $\mu\text{m}$ . Gubernaculum with small dorsal apophysis. Precloacal supplement opposite proximal end of spicule. Two subventral files of precloacal setae; anterior 15 pairs are shorter, thicker and seated on rounded papillae. Setae are also present on the tail (Fig. 82D).

Two opposed, reflexed ovaries. Vulva at 59% of body length.

*Distribution.* Clew Bay, West Ireland (sublittoral, sand and shells); Isles of Scilly (sublittoral, coarse bottom); Anglesey (coarse shell gravel beach).

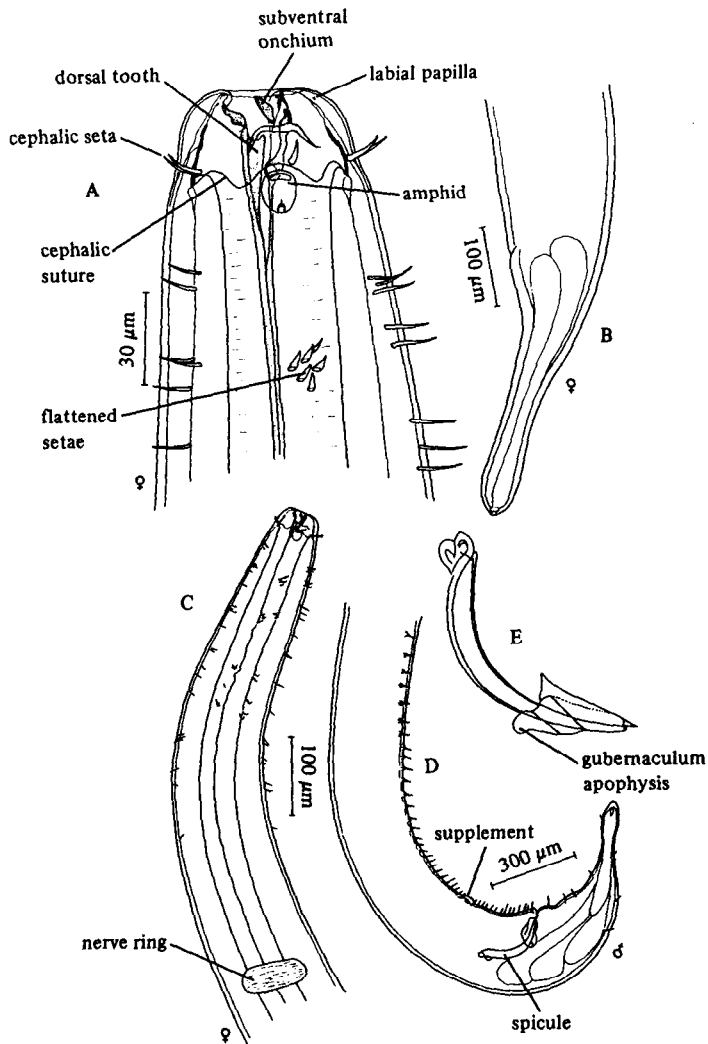


Fig. 82. *Synonchus brevisetosus*. A, Female head; B, Female tail; C, Anterior end of female (original). D, Male tail; E, Spicules and gubernaculum (from Southern, 1914).