

Spilophora gracilicauda DE MAN var. **breviseta** ALLGÉN

Fig. 137 a—d

ALLGÉN 1951, p. 304, fig. 22 a—b

Localities and material. — Fuegian Archipelago, St. 3: 1 juv.; Falkland Islands, St. 41 1 juv.; South Georgia, St. 22b: 1♀; St. 23: 2♂♂, 2♀♀; St. 23b: 1♀; St. 30: 3♂♂, 7♀♀; Graham Land, St. 6: 1 juv.

Dimensions: ♂ L = 1,850 mm., $\alpha = 21,02$, $\beta = 5,64$, $\gamma = 10,28$
♀ L = 2,045 mm., $\alpha = 26,063$, $\beta = 5,85$, $\gamma = 8,795$

The few mostly male and female specimens from the above localities seem on the whole to agree rather well with the easily recognizable *Sp. gracilicauda*, described by DE MAN from the North Sea. From that main-species they differ, however, in their very short cephalic bristles so evidently, that they must be regarded as belonging to the var. *breviseta*, described by the present author (1951) from Hawaii.

Body rather evenly thick throughout from oesophageal region up to anus. Cuticle sharply annulated and sculptured in the foremost part of the oesophageal region by transverse rows of evenly large, irregularly arranged granules, represented, in the greater part of the body, by much smaller granules. More posteriorly they are arranged in lines.

Head truncate to rounded, provided at the front end with 6 short lateral and submedial stout bristles, being, indeed, contrary to the main species, very strong, and behind them with 4 other submedial twice longer bristles.

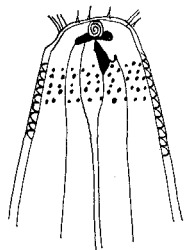
Buccal cavity supported by 8 ribs in its anterior part, and armed with a strong, acute, dorsal tooth, directed forward.

Lateral organs situated far anteriorly, spiral-shaped, very large, measuring 1/3 of the corresponding head diameter.

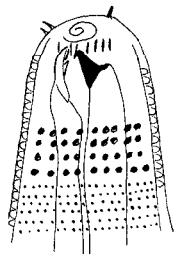
Oesophagus rather evenly thick.

Tail tapers in the 2 anterior fifths conically, and is in the 3 posterior fifths rather uniformly and strongly thinned. The thickness of the thinned posterior part makes 0,15 of body diameter at anus.

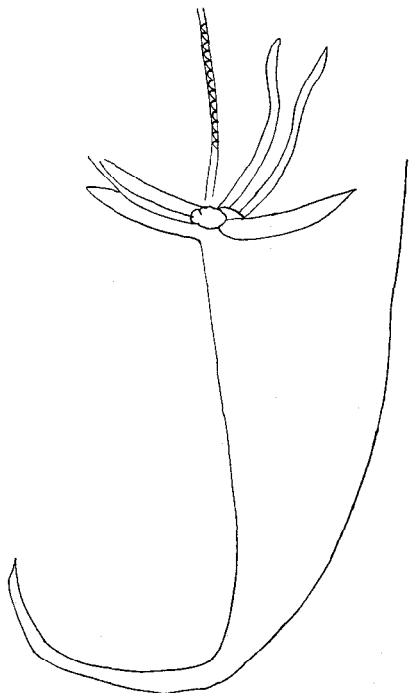
Spicules especially in their posterior half strongly developed and rather short, measuring only 1,3 × the anal body diameter.



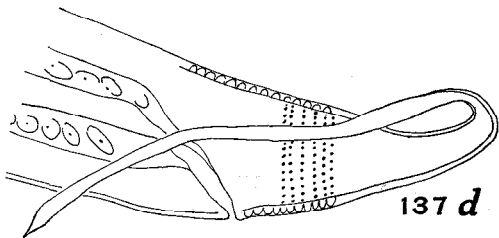
137 a



137 c



137 b



137 d

Spilophora gracilicauda breviseta ALLGÉN a. Anterior end ♂, b. Tail and spicules, c. Anterior end ♀, d. Tail ♀, ×450

List of Localities

- St. 1. Off the Coast of Uruguay. Black-grey clay. $33^{\circ} 0' S$. — $51^{\circ} 10' W$. 80 m. 12. 12. 1901.
Number of species found: 8; Number of specimens found: 21.
- St. 2. Off the Coast of North Argentina. $37^{\circ} 15' S$. — $56^{\circ} 8' W$. Sand-mixed gravel. 100 m. 23. 12. 1901.
Number of species found: 12; Number of specimens found: 26.
- St. 3. Fuegian Archipelago. $54^{\circ} 43' S$. — $64^{\circ} 8' W$. Rubble stones and gravel. 36 m. 6. 1. 1902.
Number of species found: 20; Number of specimens found: 37.
- St. 5. Graham Region. S. East of the Seymour Sound. $64^{\circ} 20' S$. — $56^{\circ} 38' W$. Sand and gravel. 150—
200 m. 16. 1. 1902.
Number of species found: 1; Number of specimens found: 10.
- St. 6. Graham Region. $64^{\circ} 36' S$. — $57^{\circ} 42' W$. Stones and gravel. Mud-sample. 125 m. 20. 1. 1902.
Number of species found: 29; Number of specimens found: 40.
- St. 7. Graham Region. $65^{\circ} 56' S$. — $54^{\circ} 35' W$. Stone-mixed mud. 920 m. 22. 1. 1902.
Number of species found: 3; Number of specimens: 7.
- St. 8. Graham Region. Position of the station as well as depth uncertain. $64^{\circ} 5' S$. — $56^{\circ} 37' W$. Loose
clay. 360 m. 11. 2. 1902.
Number of species: 9; Number of specimens: 33.
- St. 11. Graham Region. $65^{\circ} 19' S$. — $56^{\circ} 48' W$. Gravel-mixed clay. 400 m. 18. 2. 1902.
Number of species: 31; Number of specimens: 68.
- St. 15. Falkland Islands. Port William. $51^{\circ} 40' S$. — $57^{\circ} 49' W$. Macrocystis-Formation. 10 m. 31. 3. 1902.
Number of species found: 44; Number of specimens: 150.
- St. 18. South Georgia. Mouth of the Westford, Cumberland Bay. $54^{\circ} 15' S$. — $36^{\circ} 25' W$. Loose clay. 250
m. Bottom temp. + 1,2 C. 22. 4. 1902.
Number of species: 13; Number of specimens found: 125.
- St. 21. South Georgia. Mouth of the Possession-Bay. $54^{\circ} 8' S$. — $37^{\circ} 3' W$. Clay. 200 m. 9. 5. 1902. Bottom
temp. + 1,5 C.
Number of species found: 15; Number of specimens found: 79.
- St. 22. South Georgia. Off the May-Bay. $54^{\circ} 17' S$. — $36^{\circ} 28' W$. Clay with some algae. 75 m. Bottom temp.
+ 1,5 C. 14. 5. 1902.
Number of species found: 26; Number of specimens found: 85.

- St. 22a. South Georgia. Cumberland, May-Bay. Catching over stony bottom among algae in and under the tide zone. 5. 5. 1902.
Number of species found: 11; Number of specimens found 63.
- St. 22b. South Georgia. Grytviken. 22. 5. 1902 and 20 m. depth. 11. 6. 1902.
Number of species found: 16; Number of specimens found: 77.
- St. 22c. South Georgia. Grytviken, from old kelp-rhizoids. 23. 5. 1902.
Number of species found: 45; Number of specimens found: 350.
- St. 22d. South Georgia. Grytviken. Sample of fine washings from old kelp. 22. 5. 1902.
Number of species found: 22; Number of specimens found: 200.
- St. 23. South Georgia. Off the mouth of the Moraine-Bay. 54° 23' S. — 36° 26' W. Grey clay with gravel and stones. 64—74 m. Bottom temp. + 1,65 C. 16. 5. 1902.
Number of species found: 32; Number of specimens found: 147.
- St. 23a. South Georgia. Moraine-Fiord. 148 m. Bottom temp. — 0,35 C. 15. 2. 1902.
Number of species found: 14; Number of specimens found: 51.
- St. 23b. South Georgia. Moraine-Fiord. 14 m.
Number of species found: 12; Number of specimens found: 49.
- St. 24. South Georgia. Off the "Kochtopf"-Bay. 54° 22' S. — 36° 37' W. Grey clay. 95 m. 20. 5. 1902.
Number of species found: 23; Number of specimens found: 120.
- St. 25. South Georgia. Off the "Kochtopf"-Bay 54° 22' S. — 36° 27' W. Grey clay with some algae. 24—52 m. 21. 5. 1902.
Number of species found: 29; Number of specimens found: 83.
- St. 26. South Georgia. Off the "Kochtopf"-Bay. 54° 22' S. — 36° 27' W. Stony bottom with algae off the Macrocystis-Formation. 30 m. 24. 5. 1902.
Number of species found: 11; Number of specimens found: 29.
- St. 28. South Georgia. Mouth of the "Kochtopf"-Bay. 54° 22' S. — 36° 28' W. Sand and algae. 12—15 m. 24. 5. 1902.
Number of species found: 58; Number of specimens found: 338.
- St. 30. South Georgia. The Moraine-Fiord. 54° 24' S. — 36° 26' W. Clay with sparse stones. 125 m. Bottom temp. — 0,25 C. 26. 5. 1902.
Number of species found: 23; Number of specimens found: 247.
- St. 33. South Georgia, in the "Kochtopf"-Bay. 54° 22' S. — 36° 28' W. Clay and algae. 22 m. 30. 5. 1902.
Number of species found: 23; Number of specimens found: 106.
- St. 34. South Georgia. Off the mouth of the Cumberland-Bay. 54° 11' S. — 36° 18' W. Grey clay with a few stones. 250—310 m. Bottom temp. + 1,45 C. 5. 6. 1902.
Number of species found: 38; Number of specimens found: 224.
- St. 39. Falkland Islands. Port William. 51° 40' S. — 57° 41' W. Sand and small stones with algae. 40 m. 4. 7. 1902.
Number of species found: 11; Number of specimens found: 12.
- St. 40. Falkland Islands. Berkeley Sound. 51° 33' S. — 58° 0' W. Gravel and shells with algae. 16 m. Bottom temp. — 2,75 C. 19. 7. 1902.
Number of species found: 54; Number of specimens found: 291.
- St. 41. Falkland Islands. Port Louis, shallow water. 51° 33' S. — 58° 9' W.
Number of species found: 51; Number of specimens found: 310.
- St. 42. Falkland Islands. Port Louis. 51° 33' S. — 58° 9' W. Ooze and shells. 8 m. 26. 7. 1902.
Number of species found: 55; Number of specimens found: 372.
- St. 42a. Falkland Islands. Port Louis: Greenpatch. Material shaken up from algae and kelp-rhizoids, cast up on shore by storm. 30. 7. 1902.
Number of species found: 54; Number of specimens found: 150.
- St. 46. Falkland Islands. Port Louis. Carenage Creek. 51° 32' S. — 58° 7' W. Sandy bottom with quantities of *Codium*. 1 m. 9. 8. 1902.
Number of species found: 28; Number of specimens found: 103.
- St. 47. Falkland Islands. Port Louis. Mouth of the Carenage Creek. 51° 32' S. — 58° 7' W. Shells and stones. 3—4 m. 9. 8. 1902.
Number of species found: 63; Number of specimens found 247.