

*Rhabdodemanian minor* (Southern, 1914)  
(Fig. 131)

*Description.* Body length 4.8–5.0 mm. Maximum diameter 86  $\mu\text{m}$  ( $a = 56\text{--}58$ ). Cuticle smooth with a few somatic setae anterior to nerve ring and on tail but otherwise absent. Four anterior cephalic setae 5  $\mu\text{m}$  long, situated nearer the six 12  $\mu\text{m}$  (0.5 h.d.) cephalic setae than in *R. major*. Amphids extend 180  $\mu\text{m}$  (0.57 times distance from anterior to nerve ring) but the anterior origin has not been observed. Excretory pore opens slightly behind the base of the buccal cavity. Nerve ring 0.46 times oesophagus length from anterior. Tail cylindrical, 2.8–2.9 a.b.d.

Spicules 58  $\mu\text{m}$  (0.8 a.b.d.) long.

Gubernaculum 43  $\mu\text{m}$ . 18 minute precloacal supplements.

Vulva at 58% of body length. Two opposed, reflexed ovaries.

*Distribution.* West Ireland (at 26–48 m); Loch Etive, Scotland (shallow subtidal sand); Isles of Scilly (fine to coarse sand, intertidal to 30 m).

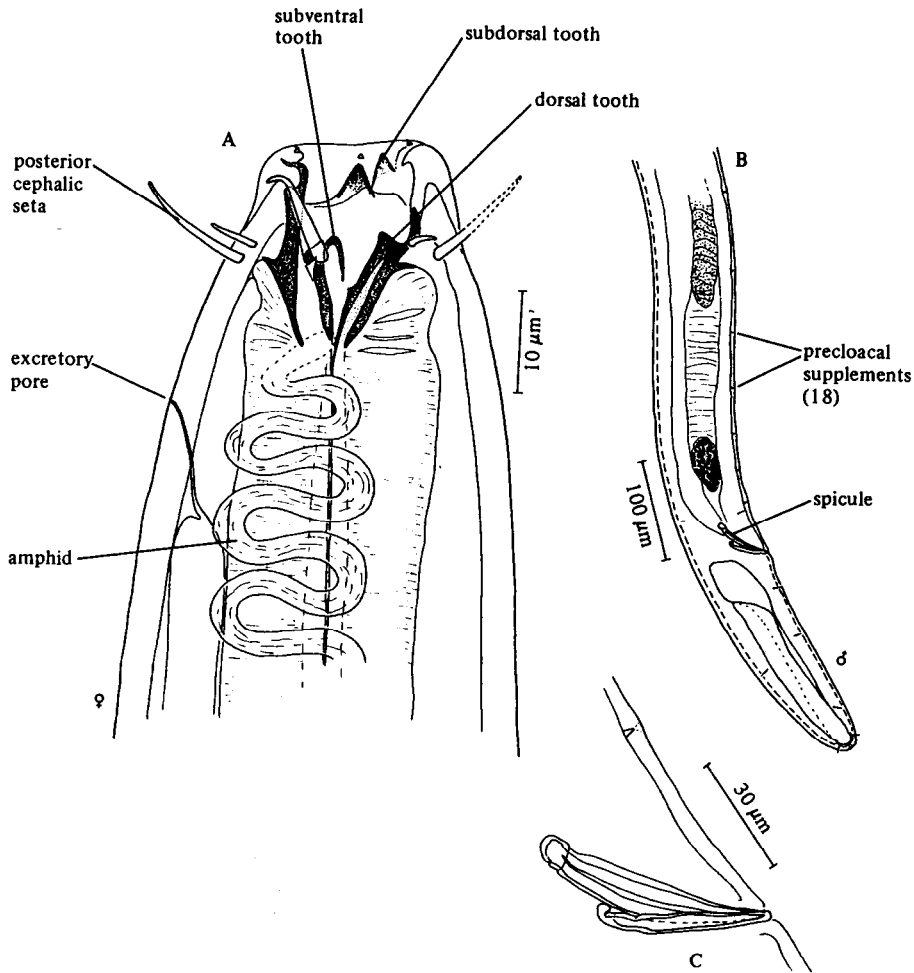


Fig. 131. *Rhabdodemanía minor*. A, Female head; B, Posterior end of male; C, Spicules and gubernaculum. Original.