

Prochromadorella macroocellata Wieser, 1951

(Fig. 54)

Description (from Wieser, 1951). Body length 0.7–0.8 mm ($a = 25\text{--}34$). Cuticle with transverse rows of angular rods which become more elongated further away from the anterior end. Cephalic setae $7\ \mu\text{m}$ (0.7 h.d.). Buccal teeth solid, the dorsal larger than the two subventral ones. Oesophageal bulb rounded and much more prominent than in the previous three species. A bright red pigment spot 1.5 h.d. from anterior (Fig. 54A). Tail 4–4.5 a.b.d. in male, 5–6 a.b.d. in female.

Spicules $22\ \mu\text{m}$ (1.0 a.b.d.). 6–7 cup-shaped precloacal supplements; anteriormost 5 a.b.d. in front of cloaca.

Distribution. Plymouth, South West England (intertidal seaweeds).

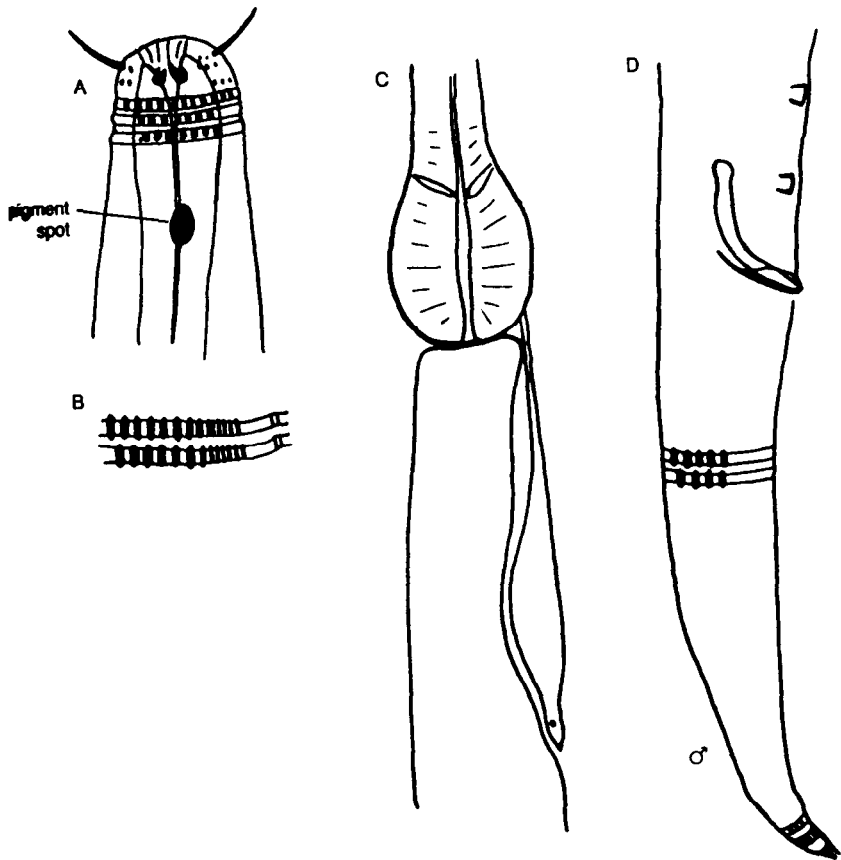


Fig. 54. *Prochromadorella macroocellata*. A, Male head; B, Lateral cuticle post-oesophagus; C, Oesophageal bulb and ventral gland; D, Male tail. From Wieser (1951).