

*Pontonema macrolaimus* (Southern, 1914)

(Fig. 106A, B, C)

*Description.* Body length 8.9–12.6 mm. Maximum diameter 154–186  $\mu\text{m}$  ( $a = 55$ –68). Amphid large. Dorsal tooth far behind the subventral teeth. Excretory pore opens just posterior to buccal cavity. Nerve ring 0.35–0.37 times oesophagus length from anterior. Tail short and bluntly conical.

Spicules 100  $\mu\text{m}$  (0.9 a.b.d.).

Gubernaculum present. Posterior to cloaca there are numerous small spines. Just anterior to cloaca is a papilla and a second small papilla is situated 124  $\mu\text{m}$  (1.1 a.b.d.) from cloaca.

Two reflexed ovaries. Vulva at 54–58% of body length.

*Distribution.* West Ireland (sublittoral in sand and shells).

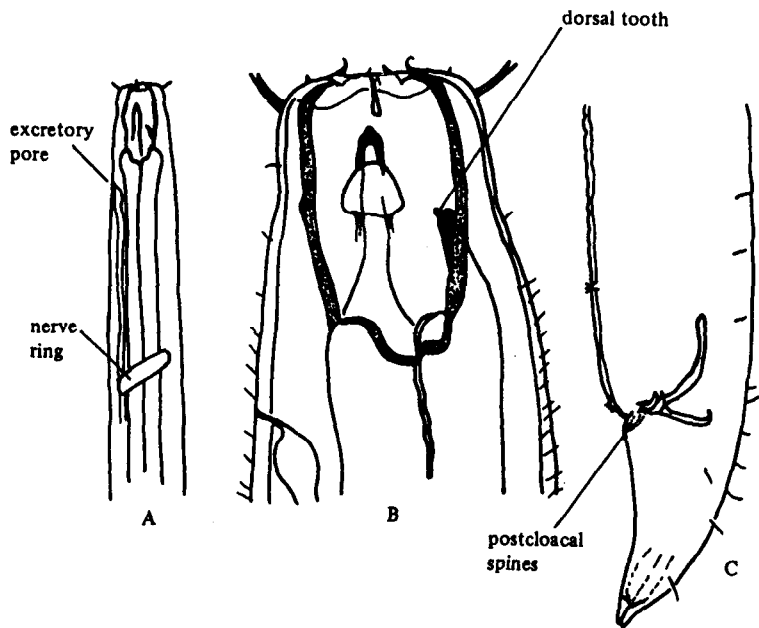


Fig. 106. *Pontonema macrolaimus*. A, Anterior end; B, Head; C, Posterior end of male (from Southern, 1914).