

*Polysigma fuscum* Gerlach, 1956  
(Fig. 163)

*Description* (from Gerlach, 1956). Body length 1.4 mm: a = 46. Six small cephalic papillae and four 5.5  $\mu\text{m}$  (0.4 h.d.) cephalic setae. Four 6  $\mu\text{m}$  cervical setae about 1 h.d. from anterior, on the striated cuticle: somatic setae otherwise reduced to small papillae. Amphids 8  $\mu\text{m}$  (0.4 c.d.) wide. Relatively small buccal cavity with two opposed teeth. Posterior oesophageal bulb well developed, 30  $\mu\text{m}$  long and 24  $\mu\text{m}$  wide: cuticular lining not markedly thickened. Tail 3.0 a.b.d., conical.

Spicules 28  $\mu\text{m}$  (1 a.b.d.), arcuate, proximal end sharply bent ventrally. Gubernaculum 20  $\mu\text{m}$ . Nineteen precloacal supplements, the anteriormost 220  $\mu\text{m}$  precloacal.

*Distribution*. Firth of Clyde, West Scotland (intertidal sand).

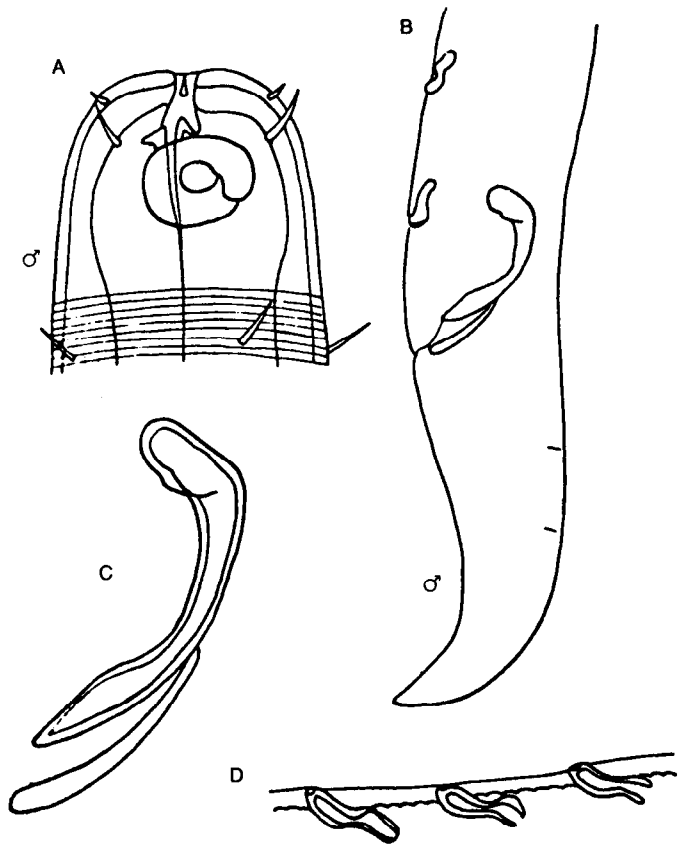


Fig. 163. *Polysigma fuscum*. A, Male head; B, Male tail; C, Spicules and gubernaculum; D, Preloacal supplements. From Gerlach (1956).