

PARALEPTOSOMATIDES SPIRALIS n.sp.

(Fig. 3, a-d.)

Stations 39, 40.

Female: L = 13-14.2 mm.; α = 71-72; β = 6; γ = 86; V = 57%.

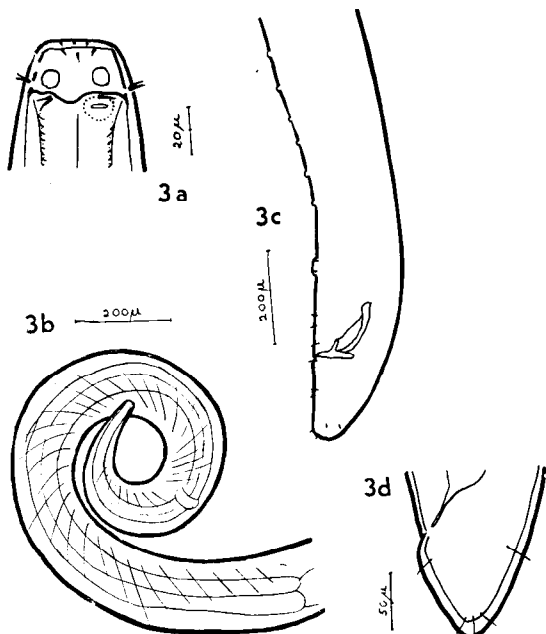
Male: L = 12.7-17.8 mm.; α = 67; β = 6.1-6.6; γ = 80-98.

Juv.: L = 7.6-9.5 mm.; α = 67; β = 6.7; γ = 78.6.

Few specimens of this species were collected, 2 juvenile, 3 male, 2 female. The appearance of the worm is distinctive as the head is closely curled, in a spiral of 1 to 1½ turns, involving the anterior 2/3 of the oesophageal region. Another distinguishing feature is the unusually long distance between the anus and the preanal organ. The thickness of the body is almost uniform throughout its length, tapering occurring near the anus and anterior to the nerve ring. Eyes are absent.

The helmet is more distinct in some specimens than in others. Its posterior border forms shallow lobes, except in one male individual in which the lobes end in trabeculae which almost meet posterior to the submedian setae. The anterior border of the helmet apparently forms an unbroken ring; at about its mid-length, however, there are six large circular lacunae, in submedian and lateral positions. In some of the specimens the posterior part of the helmet appears to be raised into small bosses. The average depth of the helmet is 1/3 of the width of the head at its base. The cephalic setae are 1/7 of the corresponding head width. The nuchal setae are small and few in number. The nerve ring is distant from the head about a quarter of the oesophageal length.

The spicules are curved, and measure 0.1-0.18 mm. from tip to tip. The gubernaculum is 80 μ long, with a lateral anterior projection. The preanal organ lies at about 1½ times the tail length in front of the anus. There are about eight pairs of papillae in front of the preanal organs, each associated with a small seta. There are also several long thin setae just in front of and just behind the anus, and 6-7 long setae on the tail. The male tail is a little longer than the anal breadth. The female tail is about equal in length to the anal breadth, and it also bears several long setae.



Paraleptosomatides spiralis: (a) head; (b) oesophageal region; (c) posterior end of male; (d) tail of female.

STATION 39 : 66° 10' S., 49° 41' E., T M L : 300 m.

Big haul characterized by silicious sponges with glass rope spicules. *Synapta*—like Holothurian common ; many Polyzoa of different species.

STATION 40 : 66° 12' S., 49° 37' E., T M L : 300 m.

Good clean haul ; Polyzoa and crinoids abundant.