

Pareurystomina acuminata (De Man, 1889)

(Fig. 119)

Description. Body length 4.2–4.5 mm. Maximum diameter 53–63 μm (a = 67–90). Longer cephalic setae 24 μm (male) and 17 μm (female). Amphids 30 μm wide (male) and 17 μm (female). Slender dorsal tooth and two complete circles of denticles in the buccal cavity. Tail finely pointed, 3.0–3.7 a.b.d. long.

Spicules 77 μm long. Gubernaculum with strong caudally directed apophysis. Precloacal supplements with long, paired, wing-like apophyses. No ventral papillae on tail.

Distribution. Penzance; Exe estuary; West Ireland (intertidal and shallow subtidal sand).

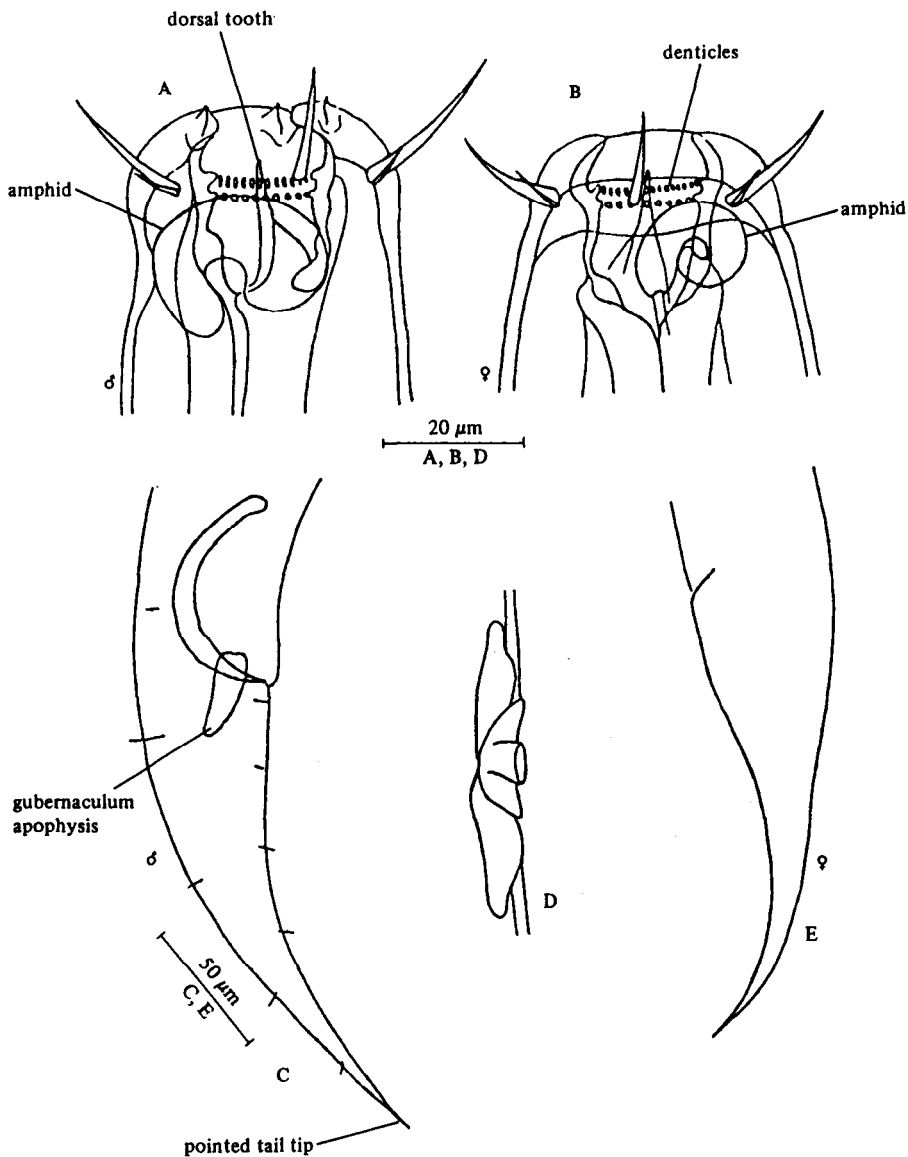


Fig. 119. *Pareurystomina acuminata*. A, Male head; B, Female head; C, Male tail; D, Preloacal supplement; E, Female tail (from Gerlach, 1952).