

Oxystomina asetosa (Southern, 1914)
(Fig. 87)

Description. Body length 3.4–4.0 mm. Maximum diameter 34–47 μm ($a = 95\text{--}100$). Very slender, tapers markedly at both ends. Cuticle smooth with no setae. Cephalic setae and cervical setae scarcely visible (or absent?). Amphids 15 μm long in both sexes. Excretory pore one-quarter of way down oesophagus length. Oesophagus 0.16 times body length. Tail 3.7–3.9 a.b.d., long, clavate.

Spicules 42 μm long, constricted near the proximal end.

Gubernaculum a small median plate with large rounded lateral lobes. An indistinct median precloacal papilla but no large precloacal setae.

Vulva 30% of body length from anterior.

Distribution. Clew Bay, West Ireland (sublittoral sand and shells).

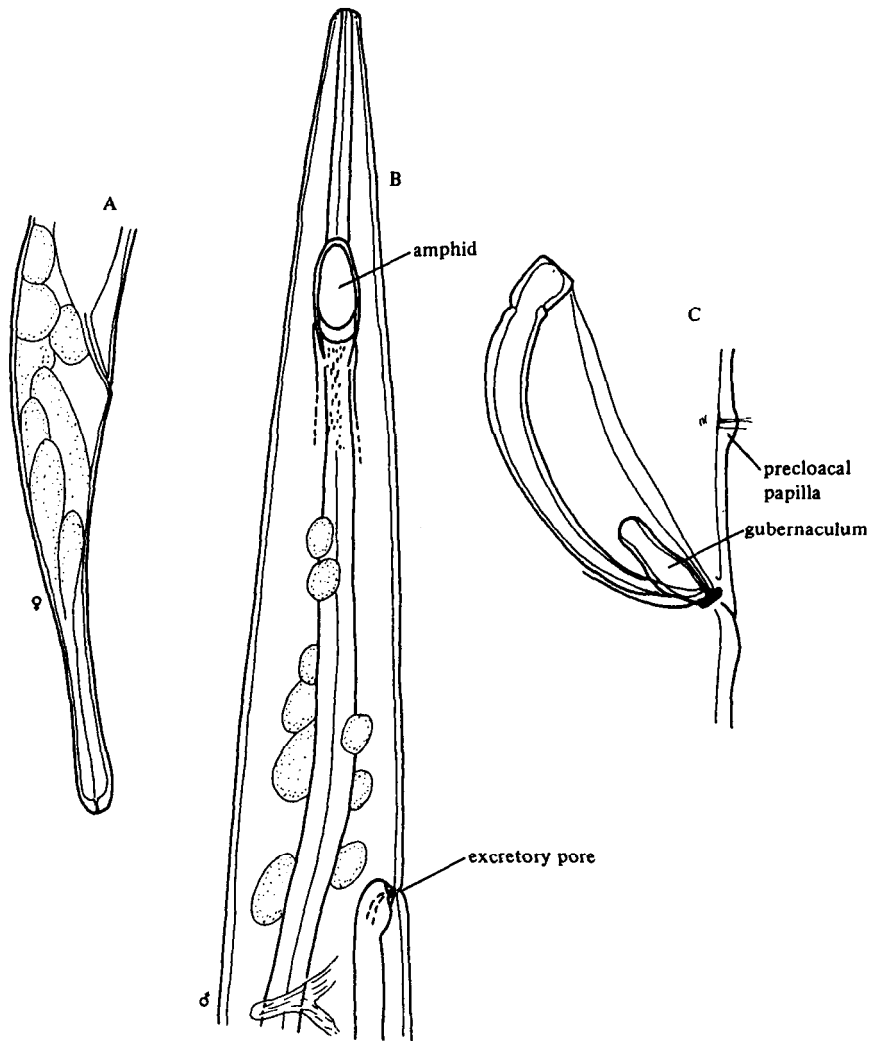


Fig. 87. *Oxystomina asetosa*. A, Female tail; B, Anterior end of male; C, Spicules and gubernaculum (from Southern, 1914).