

Oncholaimus dujardinii De Man, 1876
(Fig. 100)

Description. Body length 2–2.2 mm. Maximum diameter 40–48 μm ($a = 45\text{--}49$). Six cephalic papillae small and rounded. Longer cephalic setae 0.14 times h.d. Left subventral tooth larger than other two. Excretory pore 2.75 buccal cavity lengths from anterior. Tail strongly attenuated behind the anus, 2.3 a.b.d. long, ventrally curved in both sexes.

Spicules swollen in distal half, 1.75 a.b.d.

No gubernaculum. Six or seven pairs of curved, thorn-like circumcloacal setae.

Distribution. North-east England; Plymouth; Isles of Scilly (intertidal seaweeds and holdfasts).

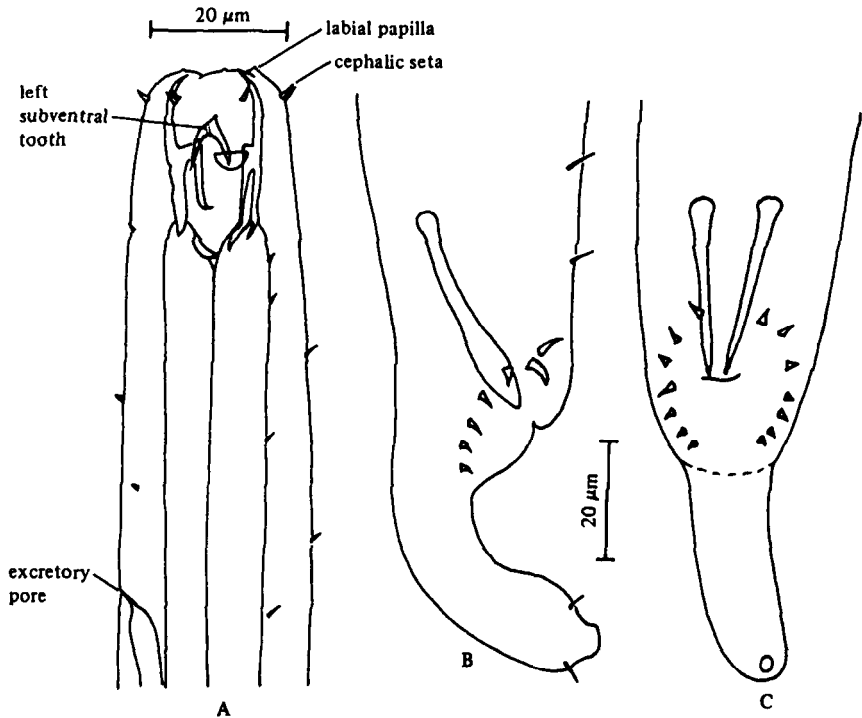


Fig. 100. *Oncholaimus dujardinii*. A, Male head (from Stekhoven, 1950); B, Male tail (lateral); C, Male tail (ventral) (from Inglis, 1962).