

*Oncholaimellus mediterraneus* Stekhoven, 1942  
(Fig. 98)

*Description.* Body length 1.3–1.5 mm. Maximum diameter 35–40  $\mu\text{m}$  (a = 34–36). Cuticle smooth. Six lips each with a minute seta. Male with six 5–7  $\mu\text{m}$  (0.5–0.6 h.d.) and four 5–6  $\mu\text{m}$  (0.4 h.d.) cephalic setae. Female with six 4–5  $\mu\text{m}$  (0.3 h.d.) and four 3–4  $\mu\text{m}$  (0.25 h.d.) cephalic setae. Somatic setae absent. Head constricted behind cephalic setae. Amphids indistinct. Buccal cavity as in *O. calvadosicus*. Excretory pore 0.57–0.60 times oesophagus length from anterior. Tail 3–4 a.b.d., cylindrical with swollen tip.

Spicules unequal; right 74–77  $\mu\text{m}$  (4.4–5.0 a.b.d.), left 53–54  $\mu\text{m}$  (3–3.5 a.b.d.).

Gubernaculum absent. Copulatory bursa present, supported and surrounded by a complex arrangement of spines, setae and papillae.

Vulva at 48% of body length. Two opposed, reflexed ovaries.

*Distribution.* Strangford Lough, Northern Ireland (intertidal sandflat).

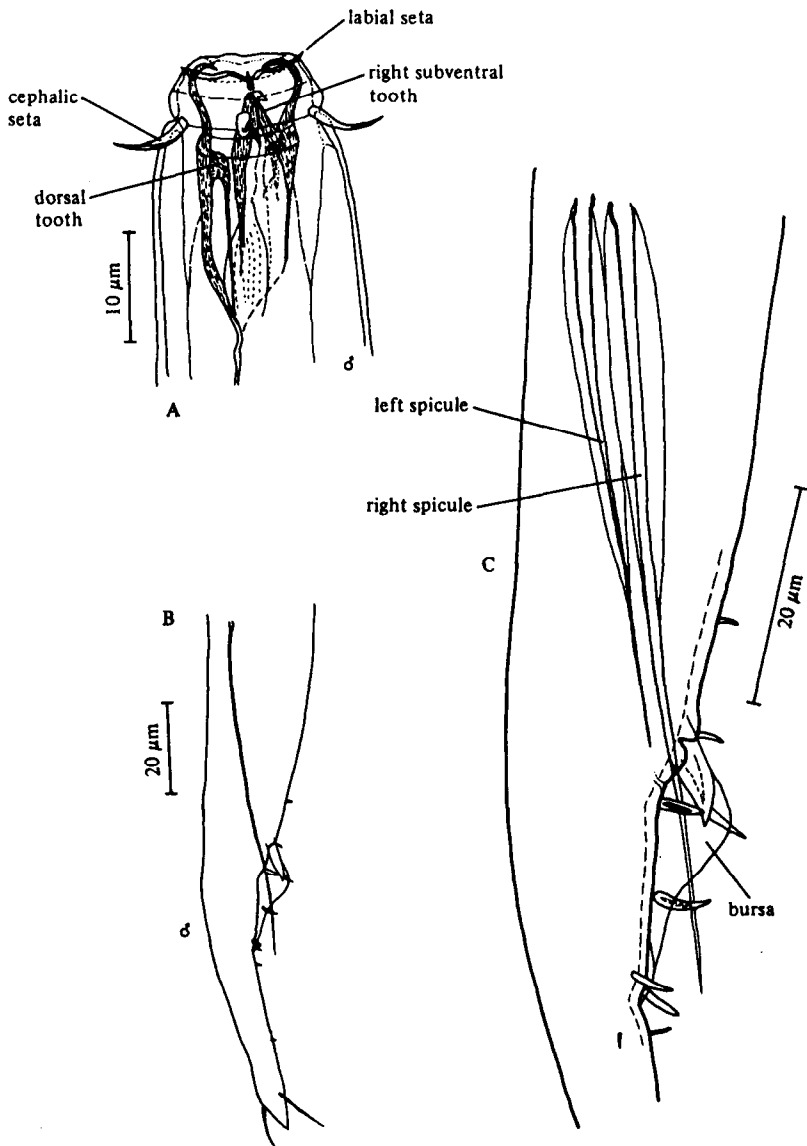


Fig. 98. *Oncholaimellus mediterraneus*. A, Male head; B, Male tail; C, Spicules and bursa copulatrix. Original.