

*Onchium conicaudatus* (Allgén, 1935)  
(Fig. 209)

*Description* (from Wieser, 1951). Body length 0.8–1.1 mm: a = 64–71. Four cephalic setae 4.5  $\mu\text{m}$  (0.9 h.d.). Ocellus just under 4 h.d. posterior (Fig. 209A). Tail 5 a.b.d., conical with a pointed tip.

Spicules about 1 a.b.d., slender, strongly arcuate with slight proximal cephalisation.

*Distribution*. Plymouth, South West England (intertidal seaweeds).

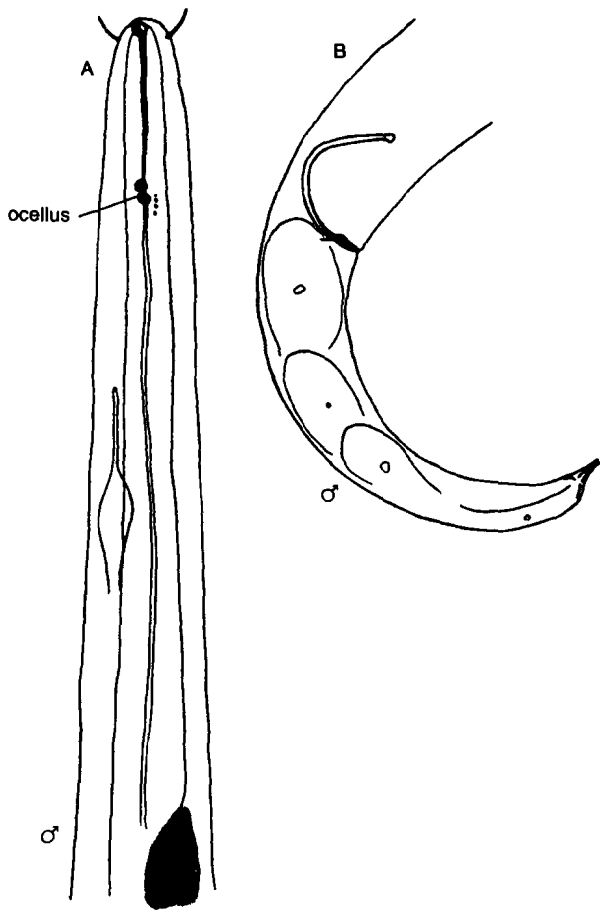


Fig. 209. *Onchium conicaudatus*. A, Male head; B, Male tail. From Wieser (1951).