

Nudora sarmatica Tchesunov, sp. n.
(figs 5-6)

Material. Caspian Sea, July 1973. Type series deposited at the Zoological Institute of USSR Academy of Sciences, Leningrad. Inventory number of the holotype 8304.

Holotype male, two paratype males and paratype female - east coast of South Caspian sea, Krasnovodsk Spit, depth 1-3 m, sand.

Measurements and description. Small, relatively slender nematodes. In holotype male body length 744 mcm, $a = 29.7$, $b = 6.9$, $c = 9.1$. In paratype males body length 812-828 mcm, $a = 33.1-37.8$, $b = 6.7-7$, $c = 9.6-9.7$. In paratype female body length

744, a = 29.8, b = 6.2, c = 9.9, V = 87.9%. In males body diameter at the level of cephalic setae 11.3(11.5) mcm, cardia 23(18.7-22.5) mcm, midbody 25(21.5-25) mcm, anus 17.5(16.2-18.7) mcm. There 12 cuticular ridges along the body (two lateral, two pairs sublateral, two pairs submedian, dorsal and ventral). The ridges consist of V-shaped incisions on cuticular rings. The incisions with their points directed posteriad in the pharyngeal part of the body and anterior in the other body part. The ridges extend from the first cuticular ring (except lateral ridges starting at about seventh ring) to anterior part of the tail in males and at vulva in female. First cephalic ring a little bit wider than second one and others.

Inner labial sensilla not seen. Outer labial sensilla as prominent papilla. Four cephalic setae in males 7.5(7.5) mcm or 66(65)% and in female 6.5 mcm or 65% c.b.d. long. Amphid round, in males situated between second and third cephalic cuticular rings. Amphid of the males 2.5(2.4-2.5) mcm or 18.5(18.2-19.2)% c.b.d. wide. Amphid of the female larger, occupies 2nd-4th cephalic cuticular rings, its width 4 mcm or 30.6% c.b.d. Somatic setae very short, sparsely distributed along the body.

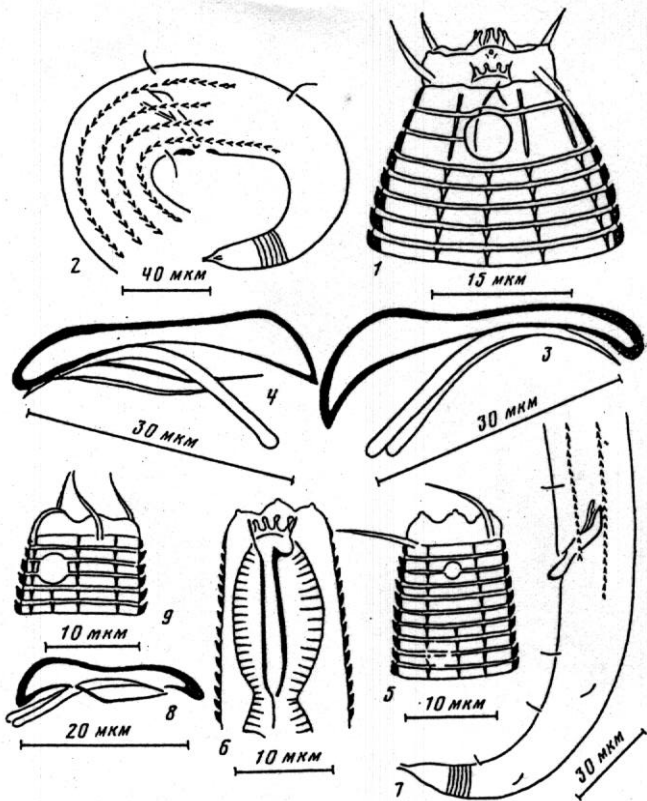
Stoma and pharynx similar to those of N. septentrionalis. Entire length of the stoma in males 21.5(20-21.2) mcm, 20 mcm in the female. Posterior double pharyngeal bulb sized 27.5x16.3 mcm in the holotype male, 31.2x17 mcm in the female.

Renette not seen.

Ovary anterior, antidromously reflexed. Testes paired. Like in N. septentrionalis vulva very close to the anus. Copulatory apparatus represented with a strong gubernaculum and two small, weak, slightly curved spicules. Gubernaculum 20.5(22.5-25.5) mcm, spicules 18.7(20-23.5) mcm long. Several cuticular rings fused ventrally just anterior to the anus.

Tail elongate-conical, with caudal setae. Terminal tail conus smooth. Tail in males 4.5(4.4-5), in female 4.3 anal body diameters long.

Differential diagnosis. Peculiar feature of the new species - amphid of female is larger than that of males. N. sarmatica is similar to N. campbelli, but differs in number of cuticular ridges (12 vs 10) and probably in shape of spicules. Other Nudora species with equal (not enlarged) cephalic cuticular rings are significantly bigger in body length (> 1000 mcm).



Nudora septentrionalis sp. n. (1—4) и *N. sarmatica* sp. n. (5—9): 1, 5 — голова голотипа; 6 — то же в оптическом разрезе; 2, 7 — хвост голотипа; 3, 8 — копулятивный аппарат голотипа; 4 — то же паратипа (одна из спикул редуцирована); 9 — голова женского паратипа