

Leptosomatides euxinus Filipjev, 1918

(Fig. 77)

Description. Body length 11.9–15.2 mm. Maximum diameter 170–225 μm ($a = 68\text{--}69$). Short somatic setae present. Anterior of body tapers gradually from the posterior end of oesophagus (c.d. 160–170 μm) to the head (c.d. 47–48 μm). Six labial papillae and twelve 5–6 μm cephalic setae. Six longitudinal rows of cervical setae plus a group of extra lateral cervical setae situated just posterior to amphid. Buccal cavity small. Cephalic capsule present; the posterior margin can be seen as an undulating subcuticular suture. Amphids 8–9 μm wide (0.15–0.20 c.d.). Ocelli present, situated 135–140 μm from anterior. Tail very short, rounded.

Spicules 160–165 μm . Gubernaculum has dorsal apophysis. Ventral precloacal supplement present. Subventral spines situated between cloaca and supplement. Seven precloacal subventral papillae; the first two are level with and just anterior to the supplement, the other five are further anterior (Fig. 41B). Each papilla consists of two short longitudinal ridges of cuticle with a small spine in the middle. Two opposed, outstretched testes; anterior situated to the left, the posterior to the right of the gut.

Two opposed, reflexed ovaries.

Distribution. Isles of Scilly (kelp holdfasts).

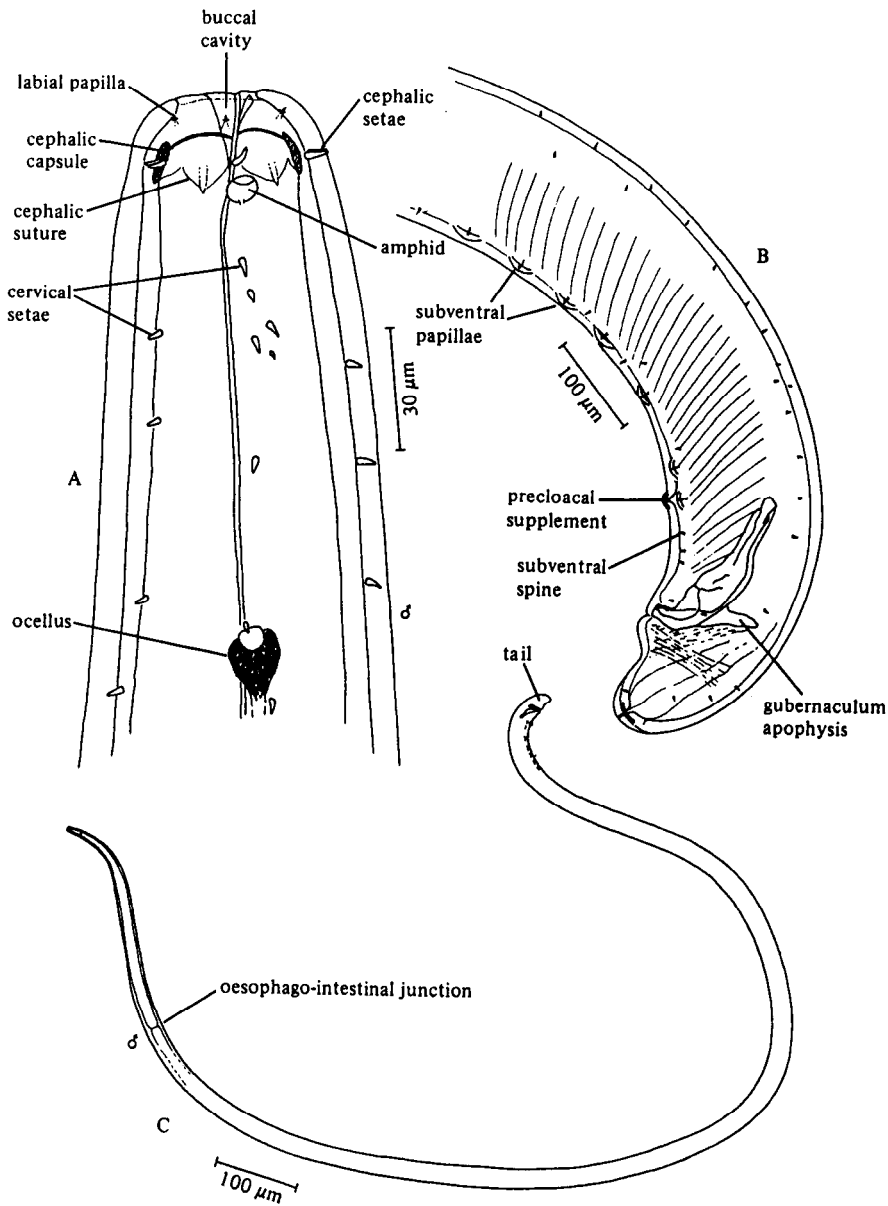


Fig. 77. *Leptosomatides euxinus*. A, Male head; B, Male tail; C, Entire male. Original.