

*Haliplectus wheeleri* Coles, 1965b  
(Fig. 210)

*Description* (from Coles, 1965b). Body length 0.9–1.3 mm. Maximum diameter 42–50  $\mu\text{m}$  ( $a = 21\text{--}29$ ). Cuticle with coarse striations. Amphids 4–5  $\mu\text{m}$  (0.25 c.d.), about 1 h.d. posterior. Tail 1.5–2.1 a.b.d.

Spicules 30–31  $\mu\text{m}$  (1.1–1.2 a.b.d.), arcuate. Gubernaculum 11–12  $\mu\text{m}$ , straight. Five prominent papillae situated close together immediately anterior to clauca (Fig. 210C). Additional papillae arranged as in Fig. 210A.

Vulva at 42–48% of body length.

*Distribution*. Skippers Island, Essex (intertidal mud).

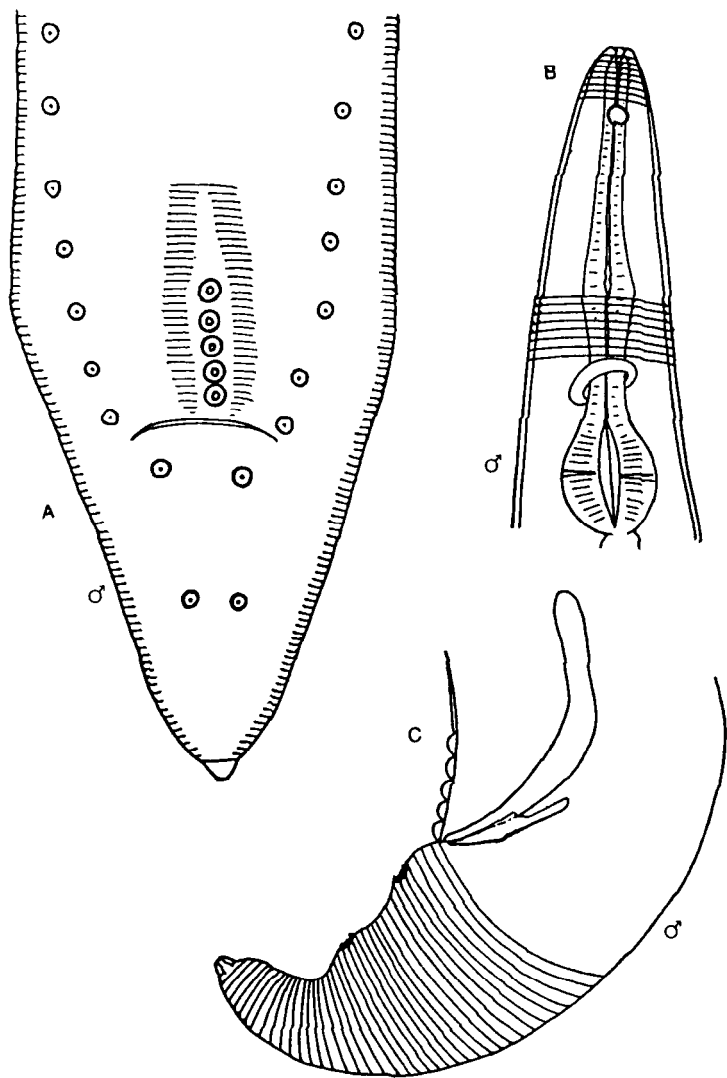


Fig. 210. *Haliplectus wheeleri*. A, Male tail, ventral view showing disposition of papillae; B, Male head; C, Male tail. From Coles (1965b).