

Gairleanema anagremilae Warwick and Platt, 1973

(Fig. 127)

Description. Body length 1.9–2.0 mm. Maximum diameter 41–44 μm ($a = 45\text{--}46$). Cuticle with rather indistinct transverse striation. Mouth surrounded by three high lips each with a pair of 28–30 μm labial setae. The labial setae have bulbous swelling about half-way along their length. Ten cephalic setae; six longer ones 68–69 μm with a thin section near the tip; four shorter 7 μm . There are a few short (up to 4.5 μm) setae scattered on the anterior cervical region. Caudal setae and two subventral 17 μm terminal setae present, but other somatic setation lacking. Buccal cavity with a pointed, heavily cuticularised, dorsal onchium pierced by a duct which leads into the oesophageal musculature. Other less distinct structures in the buccal cavity have been interpreted as two weakly cuticularised subventral teeth with rounded tips. Position and structure of amphids equivocal; there is a small indistinct pocket-like structure just behind the lateral cephalic setae with the point of junction of what may be the amphidial nerve prominent; also an indistinct single-looped structure about 11.5 μm wide more posteriorly, the inner margin of the loop being most prominent. Oesophagus cylindrical, 0.175 times body length, 22–25 μm wide at its base. Nerve ring 144–150 μm from anterior. Tail 3.9–4.8 a.b.d. long, posterior half cylindrical.

Spicules 52–53 μm (1.4 a.b.d.) long, equal, L-shaped, cephalate proximally and with broad ventral alae.

Gubernaculum paired, 21 μm long, with hooked dorsal apophyses. There is a ventral precloacal seta 11.5–13 μm long, a small ventral papilla 12.5–13 μm in front of the cloaca and two large rounded mamilliform protuberances in front of this. The posterior protuberance is 32 μm in front of the cloaca and the anterior 43–48 μm in front of the cloaca. The nipples are pierced by fine pores.

Distribution. Loch Ewe, Scotland (intertidal sand).

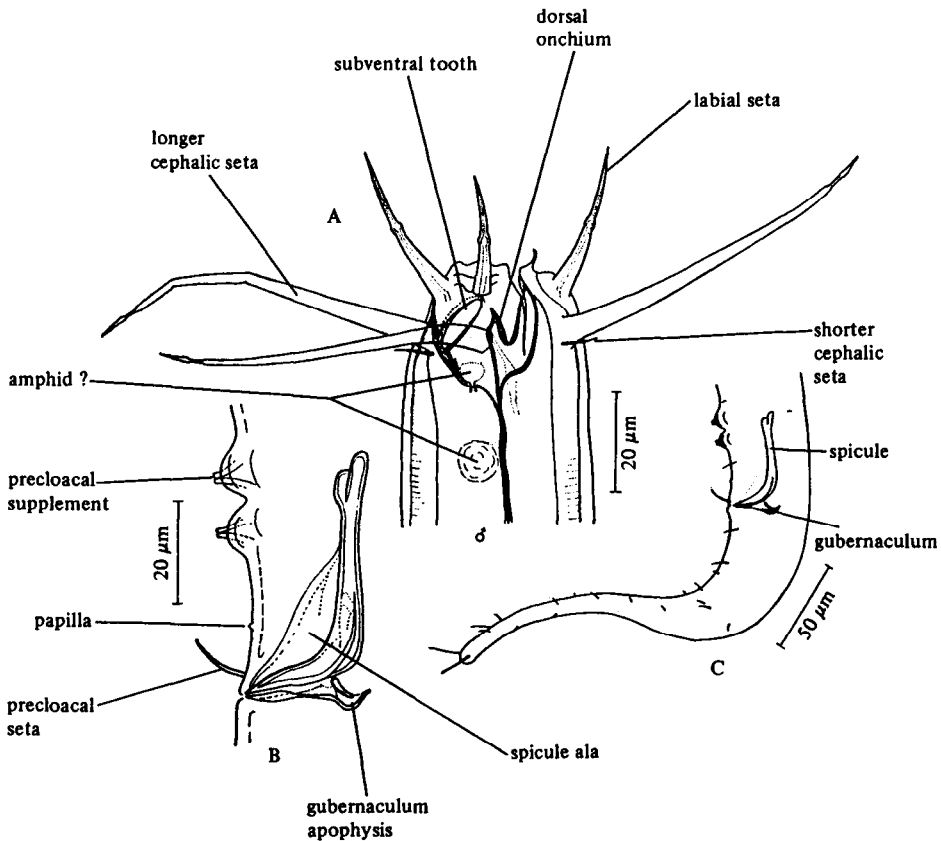


Fig. 127. *Gairleanema anagremilae*. A, Male head; B, Cloacal region; C, Male tail. Original.