

Eurystomina cassiterides (Warwick, 1977)
(Fig. 116)

Description. Body length 3.5 mm. Maximum diameter 51 μm ($a = 69$). Cuticle smooth. Some longish cervical setae and short setae scattered sparsely on tail. Six labial setae relatively long (5 μm) and slender. Ten cephalic setae in one circle; six 9 μm and four 10 μm . Amphids pocket-like, 9 μm wide. Buccal cavity divided into two sections by band of denticles. Large right subventral tooth and smaller left subventral and dorsal teeth. Excretory pore and nerve ring 0.05 and 0.28 times oesophagus length from anterior respectively. Tail 112 μm (2.8 a.b.d.), conico-cylindrical.

Spicules arcuate, 45 μm (1.1 a.b.d.).

Gubernaculum with 30 μm apophysis. Five precloacal supplements; the posterior three simple ventral swellings 0.3, 0.8 and 2.2 a.b.d. from cloaca, progressively increasing in size; anterior two 3.8 and 5.8 a.b.d. from cloaca each with minute cuticularized 'wings'.

Distribution. Isles of Scilly (sublittoral shell gravel at 52 m).

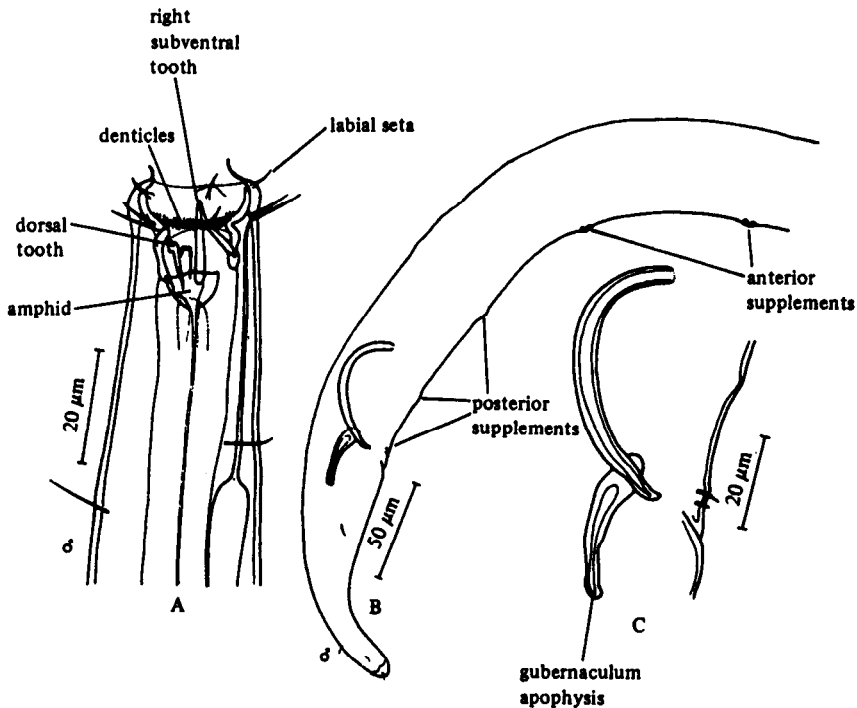


Fig. 116. *Eurystomina caesiterides*. A, Male head; B, Posterior end of male; C, Spicules and gubernaculum. Original.