

Epacanthion mawsoni Warwick, 1977
(Fig. 57)

Description. Body length 5.1–7.0 mm. Maximum diameter 52–97 μm ($a = 72\text{--}97$). Cuticle smooth. Longest cephalic setae 0.70–0.87 h.d. Twelve pairs of cervical setae just behind base of cephalic capsule in male, only four short setae in female. Mandibles of similar structure to preceding species but very short and broad. Dorsal onchium much smaller than the two subventral ones. Tail conical, 4.8–5.4 a.b.d.

Spicules short, 59 μm (1.2 a.b.d.), arcuate.

Gubernaculum a small triangular plate. Supplement 7.5 μm long, 0.4 times tail length in front of cloaca.

Distribution. Isles of Scilly (coarse sublittoral sediment).

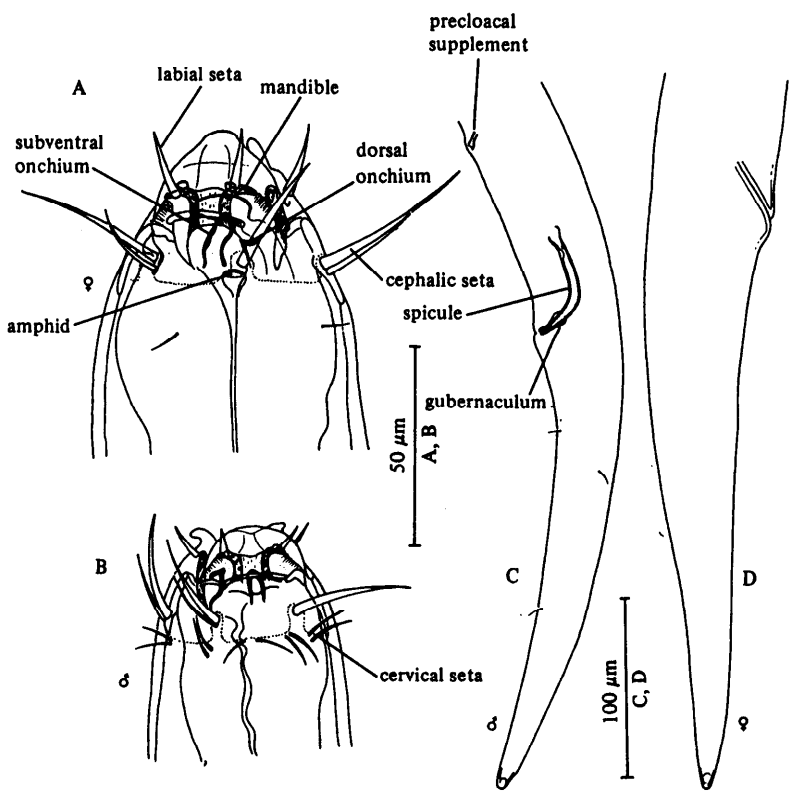


Fig. 57. *Epacanthion mawsoni*. A, Female head; B, Male head; C, Male tail; D, Female tail. Original.