

Enoplus paralittoralis Wieser, 1953

(Fig. 42)

Description. Body length 3.4 mm. Maximum diameter 84 μm ($a = 40$). Six longer cephalic setae 0.27 h.d., four others only slightly shorter. No eyespots, but irregular pigmented areas present. Amphids 0.08 c.d., at posterior margin of cephalic capsule. Tail conical, 1.6 a.b.d.

Gubernaculum a complex tubular structure with fenestrated walls about one-third of the length of the spicules. Spicules smooth, 1.3 a.b.d. (94 μm). Supplement tubular, bent, complex, 35 μm long, 2 a.b.d. in front of cloaca.

Distribution. A single male from the Exe estuary (high on the shore in muddy sand); two males from Isles of Scilly (rotting seaweed on strandline).

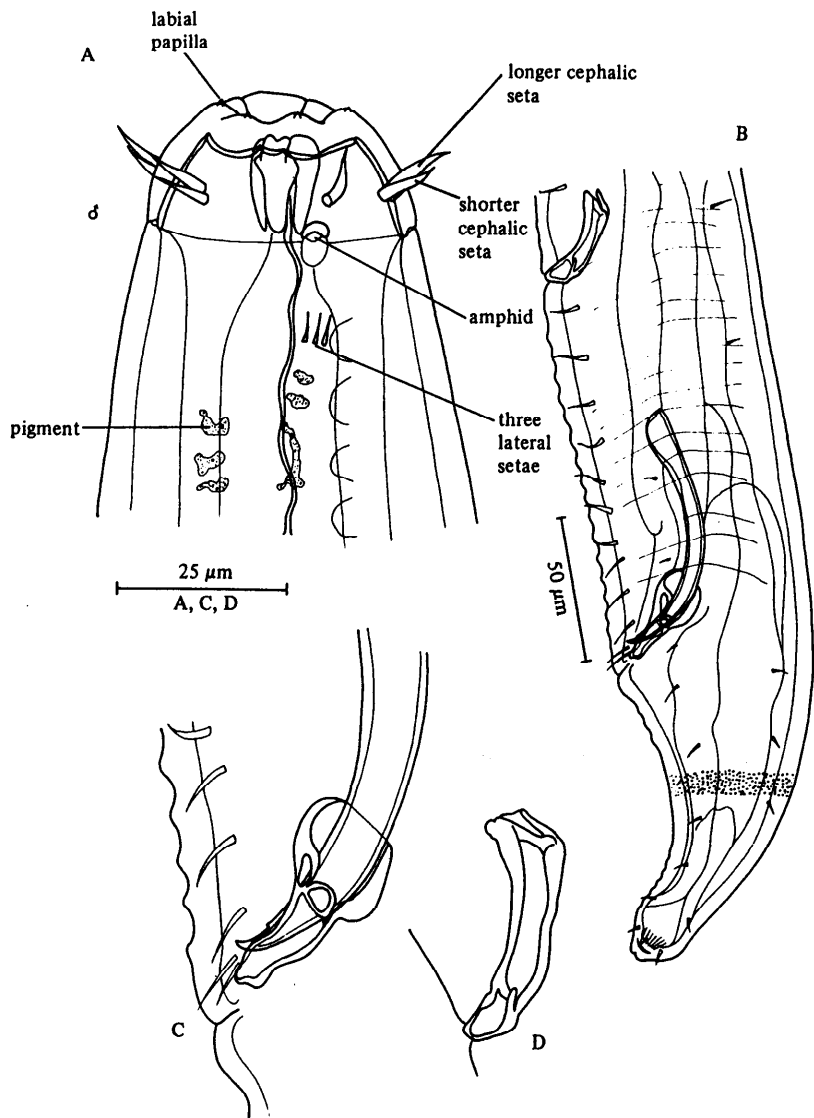


Fig. 42. *Enoplus paralittoralis*. A, Male head; B, Male tail; C, Gubernaculum and spicule tip; D, Supplement. Original.