

Enoplolaimus subterraneus Gerlach, 1952

(Fig. 54)

Description. Body length 2.4–3.3 mm. Maximum breadth 62–110 μm ($a = 30$ –39). Cuticle smooth. Lips with semi-lunar striations. Labial setae very short (7–8 μm) and stout. Six longer cephalic setae all 1.4 h.d. long, four shorter ones are only one-quarter as long. Male with six short cervical setae, none in female. Mandibles shorter and broader than in other members of the genus. Tail 2.7–3.8 a.b.d., strongly constricted behind the anus.

Spicules 38–45 μm , straight.

Supplement 2.1 a.b.d. in front of cloaca.

Vulva at 58–64% of body length.

Distribution. Exe estuary (intertidal sand).

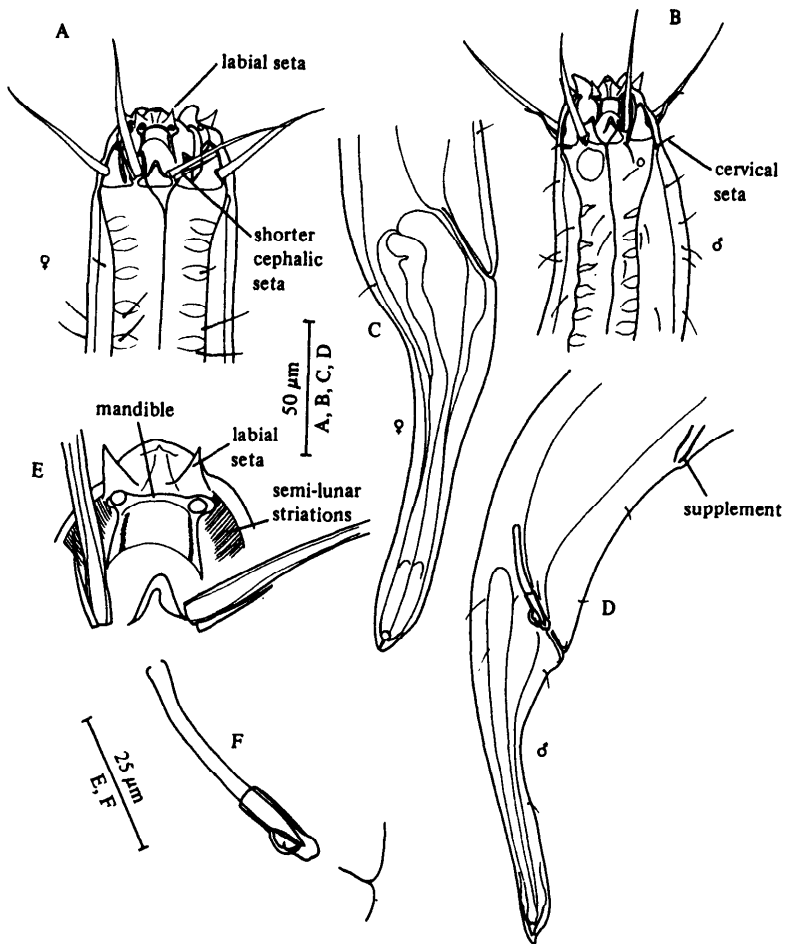


Fig. 54. *Enoplolaimus subterraneus*. A, Female head; B, Male head; C, Female tail; D, Male tail; E, Detail of lip region; F, Spicules and gubernaculum. Original.