

Enoploides longispiculosus Vitiello, 1967

(Fig. 47)

Description. Body length 2.4–2.9 mm. Maximum diameter 92–112 μm ($a = 25\text{--}30$). Shorter and stouter than *E. brunettii*. Cuticle smooth. Lips as in *E. brunettii*. Labial setae 0.22–0.29 h.d. Six longer cephalic setae 0.8–0.96 h.d., shorter four 0.5–0.57 h.d. Mandibles and mandibular processes as *E. brunettii*. No subcephalic setae, but six short cervical setae just posterior to cephalic capsule. Tail 2.5–3.0 a.b.d.

Spicules 320–345 μm (5.6–6.9 a.b.d.), transversely striated.

Gubernaculum in three parts: paired S-shaped parts 40–48 μm , dilated and knobbed distally, with an unpaired curved plate dorsal to these. Supplement large and *spatulate*, about half the spicule length in front of the cloaca. Testes paired, outstretched. Paired postcloacal papillae swollen in middle.

Vulva at 56–58% of body length.

Distribution. Exe estuary; Strangford Lough, Northern Ireland; Loch Etive, Scotland (intertidal fine to muddy sand).

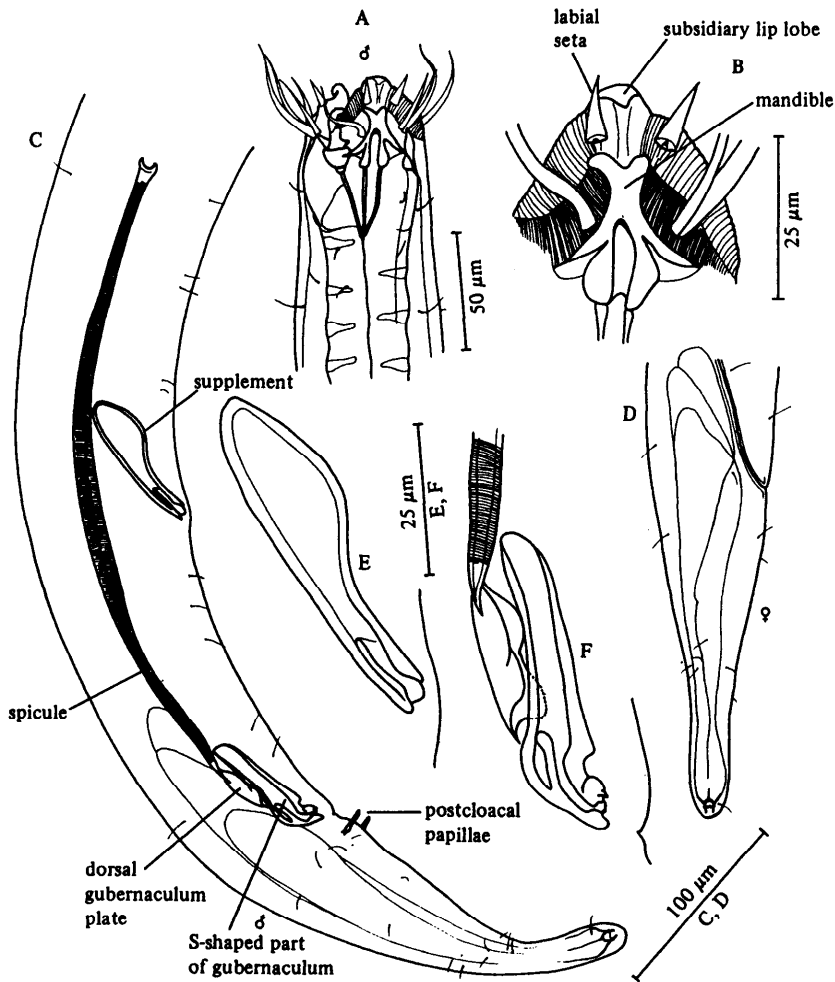


Fig. 47. *Enoploides longispiculosus*. A, Male head; B, Detail of lip region; C, Male tail; D, Female tail; E, Supplement; F, Gubernaculum and spicule tip. Original.