

Cyartonema elegans Jayasree and Warwick, 1977
(Fig. 214)

Description. Body length 1.3–1.4 mm. Maximum diameter 18 μm ($a = 74\text{--}81$). Cuticle faintly striated. Four cephalic setae 6–7 μm (0.5 h.d.). Two pairs of 4–5 μm lateral cervical setae in region of anterior oesophageal swelling. Amphids 7–8 μm (0.5–0.6 c.d.), 0.4 h.d. posterior. Posterior oesophageal swelling 20–24 μm long and 8 μm wide. Tail 7.3–7.6 a.b.d., conical.

Spicules 19–21 μm (1.2–1.3 a.b.d.), strongly arcuate, slender, roundly cephalate proximally with faint ventral ala. Gubernaculum with dorso-caudally directed apophyses with distal parts most highly cuticularised (Fig. 214D).

Females not known: generic placement therefore uncertain (c.f. *Southernia*, p. 460).

Distribution. Firth of Clyde, West Scotland (intertidal sand).

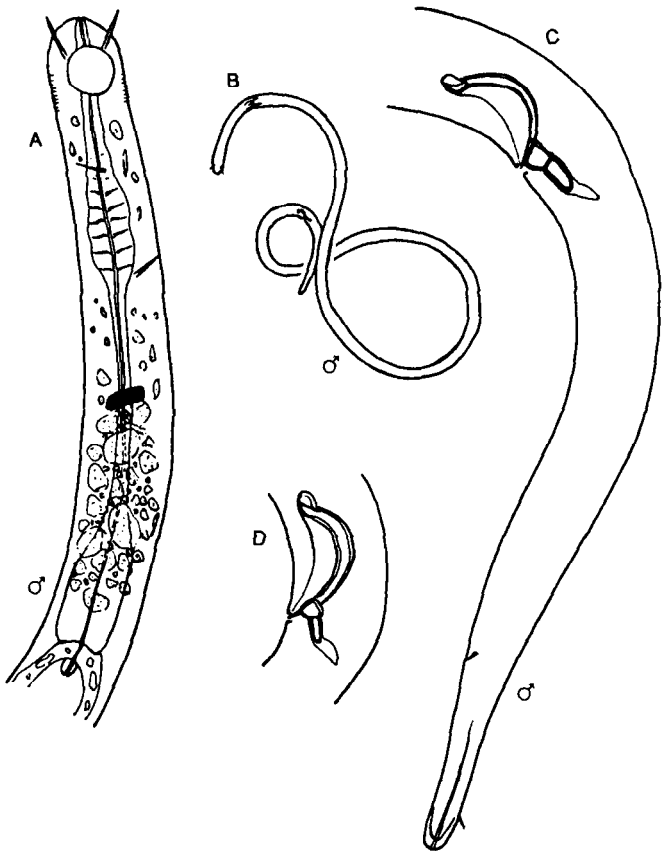


Fig. 214. *Cyartonema elegans*. A, Anterior end of male; B, Entire male; C, Male tail; D, Cloacal region. From Jayasree and Warwick (1977).