

Comesa votadinii (Warwick, 1971)
(Fig. 101)

Description. Body length $0.8\ \mu\text{m}$. Maximum diameter $25\text{--}35\ \mu\text{m}$ ($a = 23\text{--}33$). Cuticle punctation in transverse rows, dots slightly larger laterally posterior to oesophagus but without marked lateral differentiation; arrangement of cuticle pores unknown. Anterior and posterior cephalic setae both $1.5\ \mu\text{m}$. Amphids 4.5 turns, $6.5\ \mu\text{m}$ ($0.7\ \text{c.d.}$). Buccal cavity narrow, with a large dorsal tooth. Tail $3.0\text{--}3.3\ \text{a.b.d.}$

Spicules $34\ \mu\text{m}$ ($1.5\ \text{a.b.d.}$), arcuate with two ventral undulations in proximal third (Fig. 101C). Fourteen precloacal supplements.

Distribution. Northumberland coast, North East England (sublittoral silt).

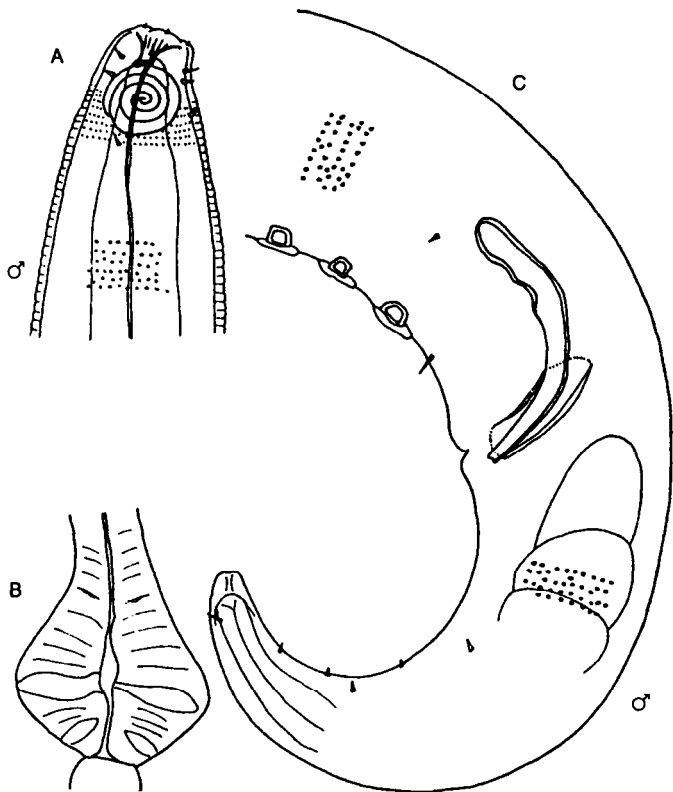


Fig. 101. *Comesa votadinii*. A, Male head; B, Oesophageal bulb; C, Male tail. Original.