

*Chromadorella duopapillata* Platt, 1973  
(Fig. 45)

*Description.* Body length 1.0 mm: a = 27–33. Cuticle punctated with heterogeneous ornamentation (Fig. 45C-G) and lateral differentiation consisting of two rows of large dots beginning a short distance posterior to the base of the oesophagus and absent from the last third of the tail. Four  $8\ \mu\text{m}$  (0.7 h.d.) cephalic setae. Short, fine cervical and caudal setae; somatic setae otherwise scarce. Amphids  $6\text{--}7\ \mu\text{m}$  (0.5–0.6 h.d.) wide, transversely oval and curved, situated between cephalic setae. Conical buccal cavity with small indistinct teeth. Oesophagus with well-developed posterior bulb. Tail 4.5 a.b.d. in male, 7 a.b.d. in female; terminal part unstriated; spinneret asymmetrical (Fig. 45B).

Spicules  $29\text{--}33\ \mu\text{m}$  (1.0 a.b.d.). Eight precloacal cup-shaped supplements extending about  $100\ \mu\text{m}$  in front of cloaca; anterior four larger than posterior four (Fig. 45B).

*Distribution.* Strangford Lough, North East Ireland (intertidal sand).

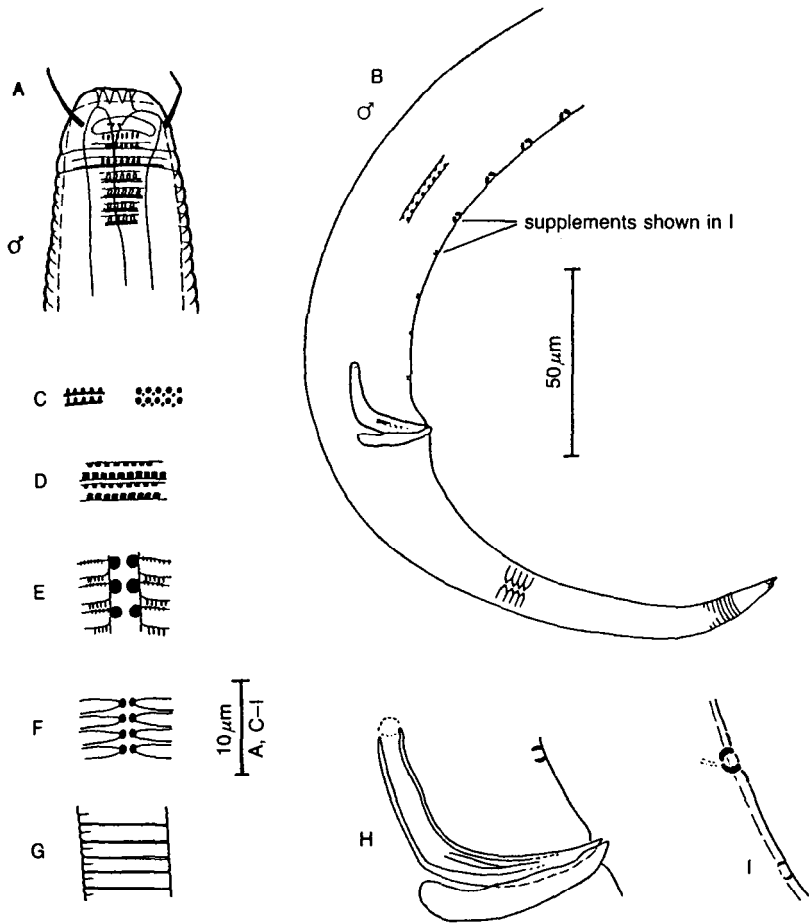


Fig. 45. *Chromadorella duopapillata*. A, Male head; B, Male tail; C, D, E, F, G, Lateral cuticle in anterior cervical region (two planes of focus), mid-cervical region, mid-body, anterior caudal and posterior caudal regions respectively; H, Male cloacal region; I, Fourth and fifth supplements. Original.