

Calomicrolaimus acanthus (Jayasree and Warwick, 1977)
(Fig. 185)

Description (from Jayasree and Warwick, 1977). Body length 0.8–1.2 mm. Maximum diameter 27–32 μm ($a = 31\text{--}37$). Cuticle with fine transverse rows of tiny dots, most easily seen in cervical region. Six short 1 μm and four longer 5–6 μm (0.4–0.5 h.d.) cephalic setae. Amphids 12 μm (0.7–0.8 c.d.) wide, 1.1–1.8 h.d. posterior. Posterior oesophageal bulb 24–25 \times 19–20 μm . Tail 3.5–4.2 a.b.d.

Spicules 31–34 μm (1.1–1.4 a.b.d.), arcuate and roundly cephalate proximally. Gubernaculum expanded distally and curved proximally, lying free from spicules. 4–6 prominent precloacal papillae each bearing a 3–4 μm stout seta.

Distribution. Firth of Clyde, West Scotland (intertidal sand).

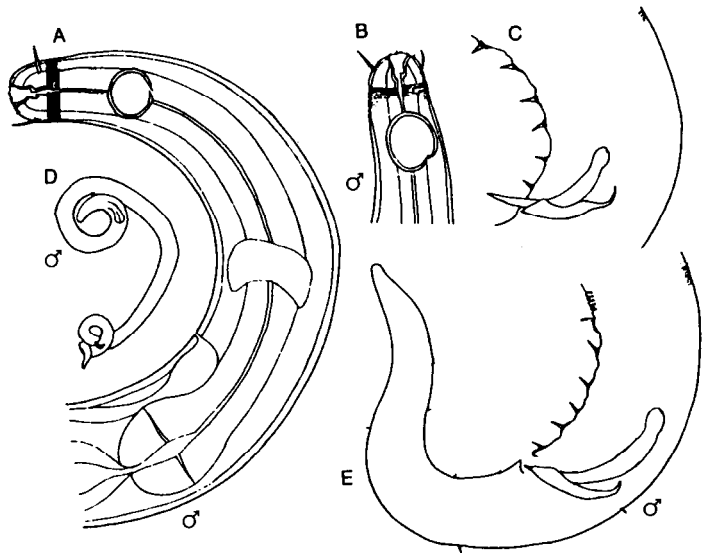


Fig. 185. *Calomicrolaimus acanthus*. A, Anterior region; B, Male head; C, Cloacal region; D, Entire male; E, Male tail. From Jayasree and Warwick (1977).