

Anticoma eberthi Bastian, 1865

(Fig. 71)

Description. Much larger than preceding species: body length 6–7 mm (a = 55–60). Cephalic setae 25 μ m. Cervical setae commence 1.5 h.d. from anterior. Excretory pore well posterior to cervical setae. Tail 3–4 a.b.d. long.

Spicules 1.3 a.b.d. long. Supplement 1.5 a.b.d. in front of cloaca.

Distribution. Falmouth (*Corallina* in tide-pool); Clare Island, West Ireland (intertidal); North East England (*Laminaria* holdfasts); Isles of Scilly (intertidal *Corallina*, subtidal sand at 18–21 m).

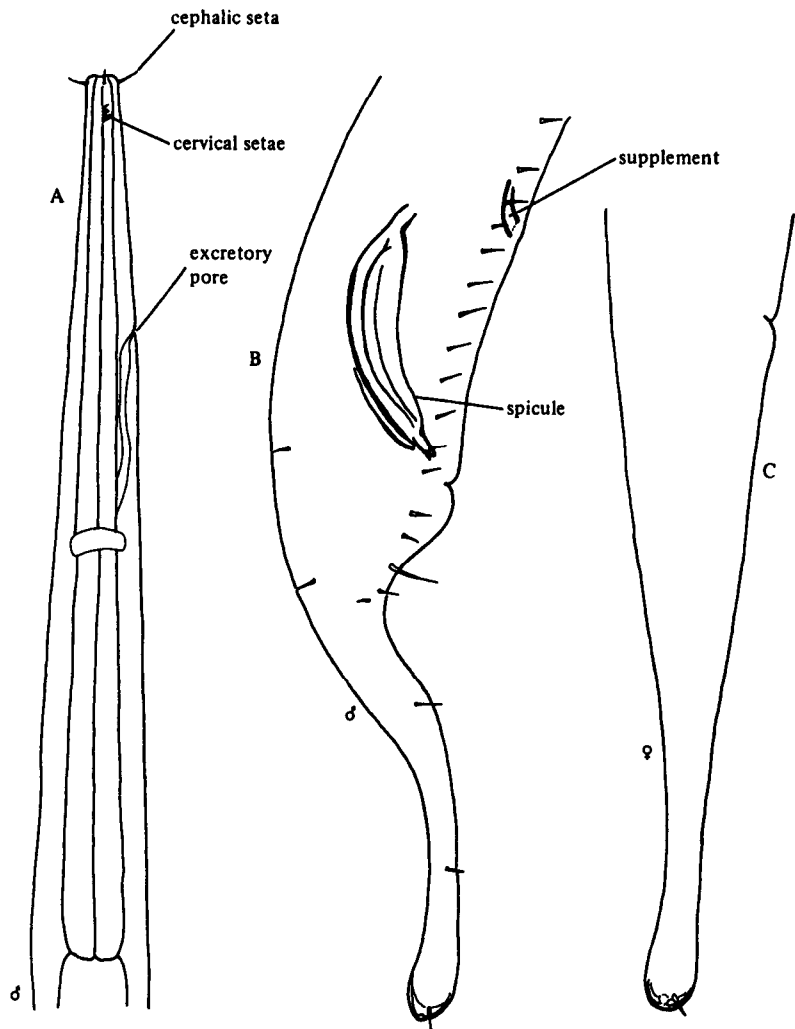


Fig. 71. *Anticoma eberthi*. A, Anterior end (from Bastian, 1865); B, Male tail; C, Female tail (from De Man, 1889).