

Antarcticonema comicapitatum n. sp.

Fig. 5A, B

Male (8). $L = 590$ (500-638) μm ; $mbd = 59$ (51-74) μm ; $t = 130$ (119-147) μm ; $hd = 22 \times 13$ μm ; $cs = 22-25$ μm ; and $ts = 48-52$ μm .

Female (10). $L = 686$ (531-900) μm ; $mbd = 81$ (64-98) μm ; $t = 83$ (58-103) μm ; $hd = 23 \times 14$ μm ; $cs = 22-26$ μm ; and $ts = 47-51$ μm .

Holotype male. Body composed of about 100 annules plus some indistinct annules toward tail tip. Irregular row of fine hairlike projections in center of each annule, slightly longer at posterior of body. Head about 25×15 μm , broadly rounded at anterior; cuticularized portion anterior to amphids and cephalic setae covered with a translucent punctate capsule, with fine radial tubelike elements pass-

ing through capsule. Large transverse elliptical thick-rimmed amphids, situated between and behind cephalic setae. Cephalic and somatic setae thick and hollow, with narrowly open tips; clear, thin membrane at posterior edge of cephalic setae. Subdorsal setal pattern in 1 male:

11, 20, 28, 42, 55, 69, 83, 92, 99

10, 19, 28, 43, 56, 71, 82, 90, 98

Subventral setal pattern in 1 male:

5, 12, 20, 30, 44, 57, 68, 80, 95

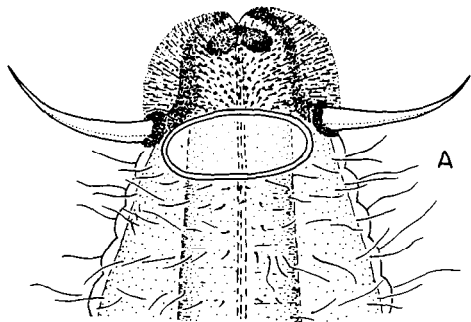
5, 14, 19, 29, 37, 44, 50, 56, 77, 94

Pigment spots 13–16 μm long, at level of annules 11–18, situated just anterior to large, granular pigment cells. Shallow stoma surrounded by 6 cuticularized plates. Esophageal corpus thick, followed by narrower isthmus surrounded by nerve ring and obscure base, with the large pigment cells between esophagus and intestine. Intestinal cells

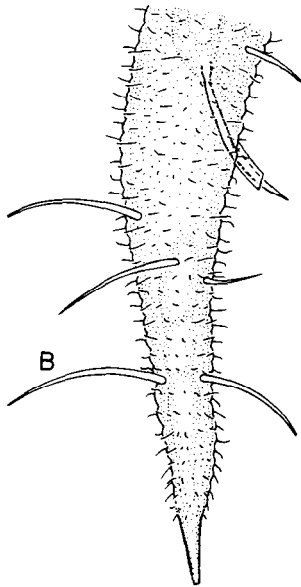
filled with large, pale, finely granular globules and numerous small, yellowish, dense inclusion bodies. Vulva in annules 51–54. Single, short, outstretched testis with few spermatocytes. Short cloacal cone. Spicules 45–50 μm long, cephalate, with relatively thick broad blades. Gubernaculum parallel to spicules, with sleeve around spicules. Tail tapering to narrowly truncate tip; 3 caudal glands in tail region; 21–24 tail annules in both sexes.

Localities. Type locality: Cape Royds, 540 m; other localities: Scott Base, 535 m; Hut Point, 457 m.

Specimens. Holotype male: collected by R. W. Timm and D. R. Viglierchio on January 31, 1970; NMNH catalog number 49994. Paratypes: NMNH catalog numbers 49995–50002; UCNC, Davis, catalog number 1361.



A, C
12 μ
D
20 μ
B
30 μ



A, *Antarcticonema comicapitatum* n. g., n. sp., female head; B, *Antarcticonema comicapitatum* n. g., n. sp., male tail;