

ILLUSTRATIONS  
OF THE  
**ZOOLOGY**  
OF THE  
ROYAL INDIAN MARINE SURVEYING STEAMER  
**INVESTIGATOR,**  
UNDER THE COMMAND OF  
COMMANDER A. CARPENTER, R.N., D.S.O.,  
OF  
THE LATE COMMANDER R. F. HOSKYN, R.N.,  
AND OF  
COMMANDER C. F. OLDHAM, R.N.

---

**CRUSTACEA.**

Part III, Plates IX—XV.



335882  
MAY 27 1896

Published under the Authority of Captain J. Fext, R.N., C.I.C.,  
Director of the Royal Indian Marine.

CALCUTTA :  
PRINTED AND SOLD BY THE SUPERINTENDENT OF GOVERNMENT PRINTING.  
1895.

ILLUSTRATIONS  
OF THE  
ZOOLOGY  
OF THE  
ROYAL INDIAN MARINE SURVEYING STEAMER  
INVESTIGATOR,

UNDER THE COMMAND OF  
COMMANDER A. CARPENTER, R.N., D.S.O.,  
OF  
THE LATE COMMANDER R. F. HOSKYN, R.N.,  
AND OF  
COMMANDER C. F. OLDHAM, R.N.

---

CRUSTACEA.

Part III, Plates IX—XV.



Published under the Authority of Captain J. Dext, R.N., C.I.C.,  
Director of the Royal Indian Marine.

CALCUTTA:  
PRINTED AND SOLD BY THE SUPERINTENDENT OF GOVERNMENT PRINTING.

1895.

## EXPLANATION OF PLATES.

### CRUSTACEA.

[BY A. ALCOCK AND A. R. S. ANDERSON.]

#### PLATE IX.

**Figs. 1, 1a.**—*Crangon bengalensis*, Wood-Mason, ♀. Annals and Magazine of Natural History, November, 1891, p. 360.

**Figs. 2, 2a.**—*Crangon andamanensis*, Wood-Mason, ♀. Annals and Magazine of Natural History, November, 1891, pp. 360, 361.

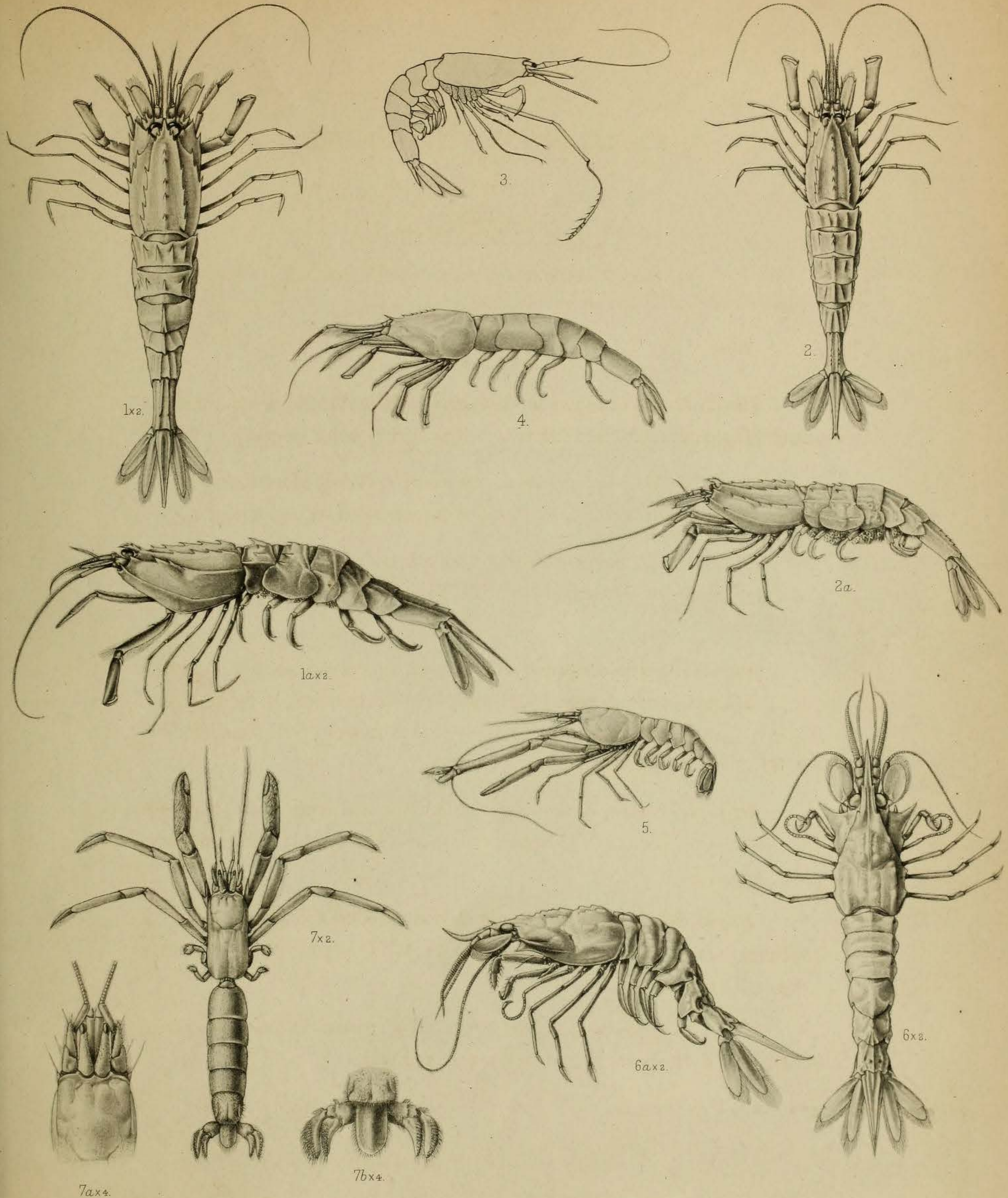
**Fig. 3.**—*Sergestes hamifer*, Alcock and Anderson, ♀. Journal, Asiatic Society of Bengal, Vol. LXIII, pt. 2, No. 3, 1894, pp. 148, 149.

**Fig. 4.**—*Prionocrangon ommatosteres*, Wood-Mason, ♀. Annals and Magazine of Natural History, November, 1891, p. 362; and Alcock and Anderson, Journal, Asiatic Society of Bengal, Vol. LXIII, pt. 2, No. 3, 1894, pp. 152, 153.

**Fig. 5.**—*Alpheus macroscelus*, Alcock and Anderson, ♂. Journal, Asiatic Society of Bengal, Vol. LXIII, pt. 2, No. 3, 1894, pp. 153, 154.

**Figs. 6, 6a.**—*Glyphocrangon cerea*, Alcock and Anderson, ♂. Journal, Asiatic Society of Bengal, Vol. LXIII, pt. 2, No. 3, 1894, pp. 151, 152.

**Fig. 7.**—*Pylocheles scorpio*, Alcock, ♀. Annals and Magazine of Natural History, March, 1894, pp. 244, 245.



1. 1a. Crangon bengalensis. ♀. x2. 2. 2a. Crangon andamanensis. ♀. 3. Sergestes hamifer. 4. Prionocrangon ommatosteres. ♀  
 5. Alpheus macroscelus. 6. 6a. Glyphocrangon cerea. x2. 7. Pylocheles scorpio. x2.

EXPLANATION OF PLATES.

—♦—  
CRUSTACEA.

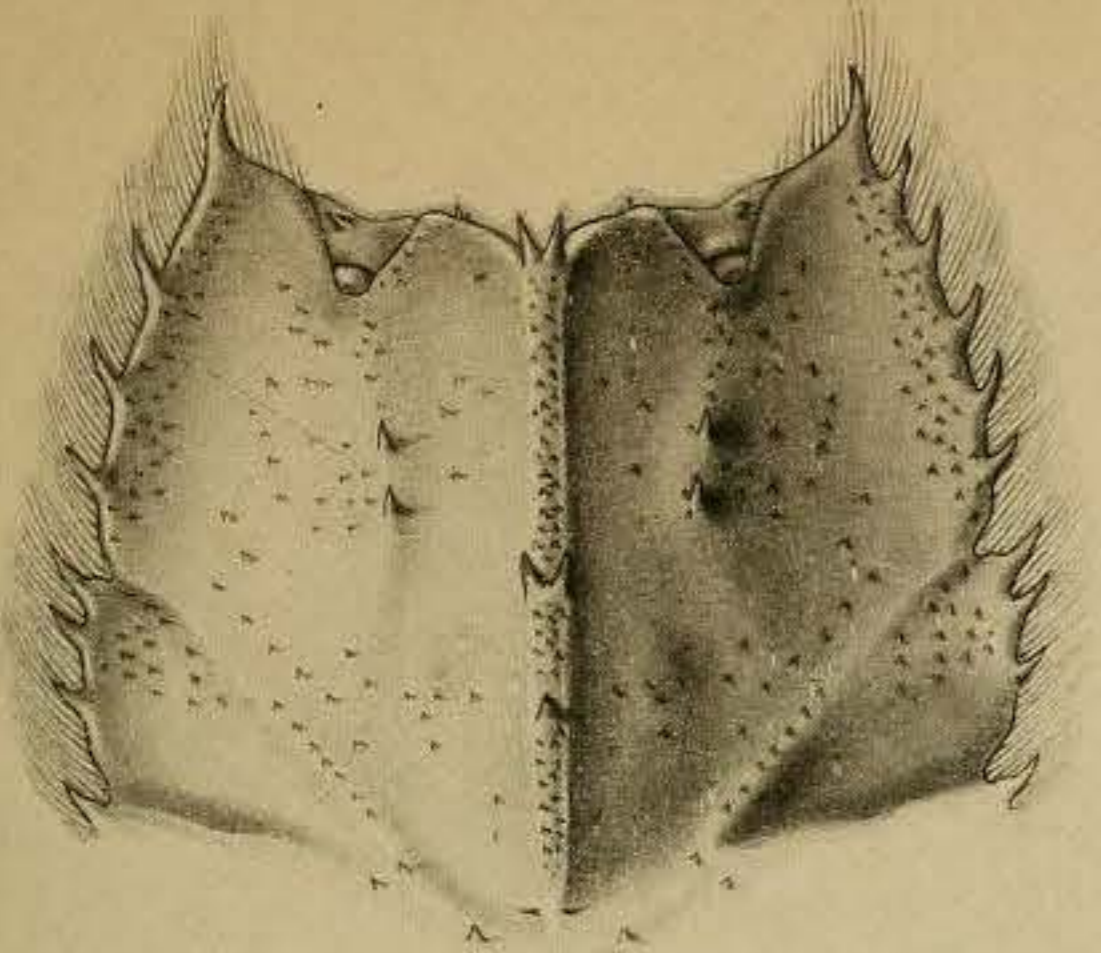
[BY A. ALCOCK AND A. R. S. ANDERSON.]

—♦—  
PLATE X.

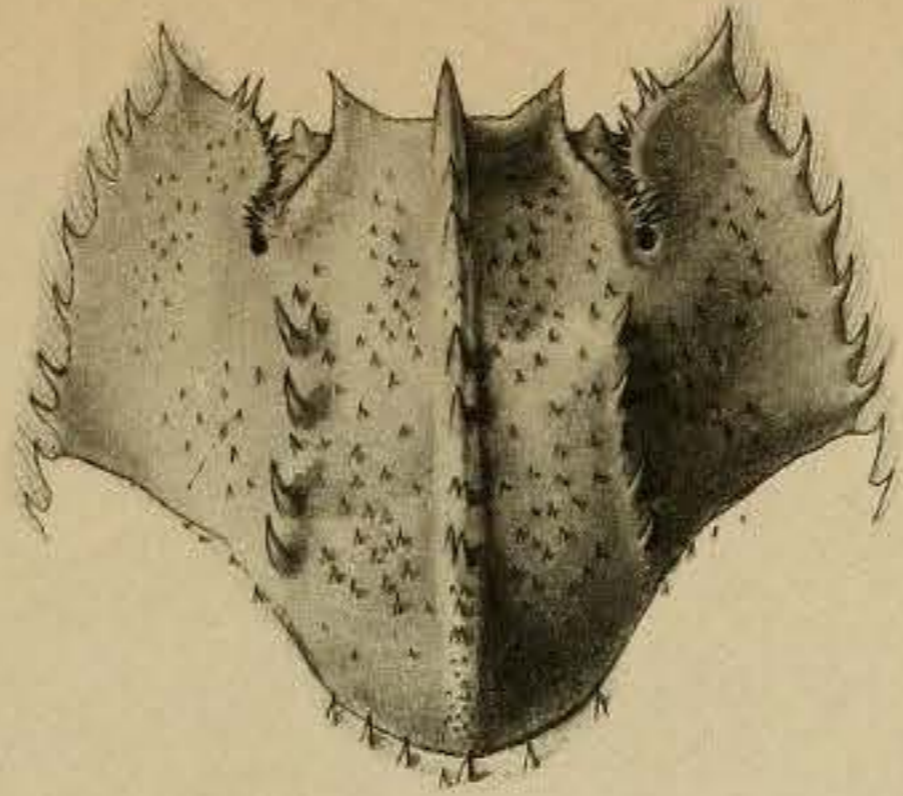
*Figs. 1, 1a, 1b, 1c.*—*Pentacheles carpenteri*, Alcock, ♀. Annals and Magazine of Natural History, March, 1894, pp. 235, 236.

*Figs. 2, 2a, 2b, 2c.*—*Pentacheles hextii*, Alcock, ♂. Annals and Magazine of Natural History, March, 1894, pp. 237-239.

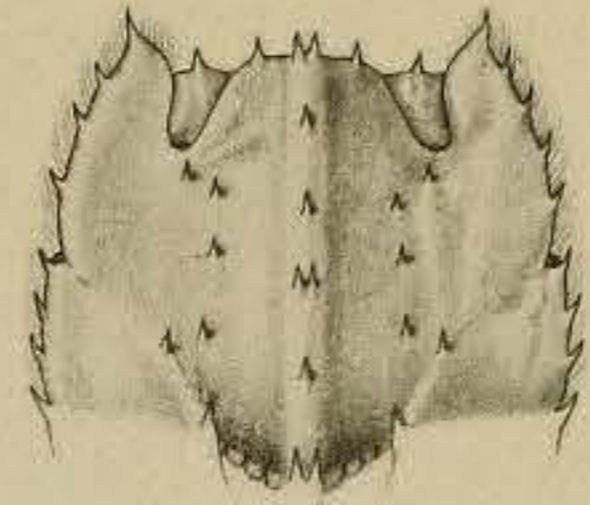
*Figs. 3, 3a, 3b, 3c.*—*Pentacheles andamanensis*, Alcock, ♀. Annals and Magazine of Natural History, March, 1894, pp. 239, 240.



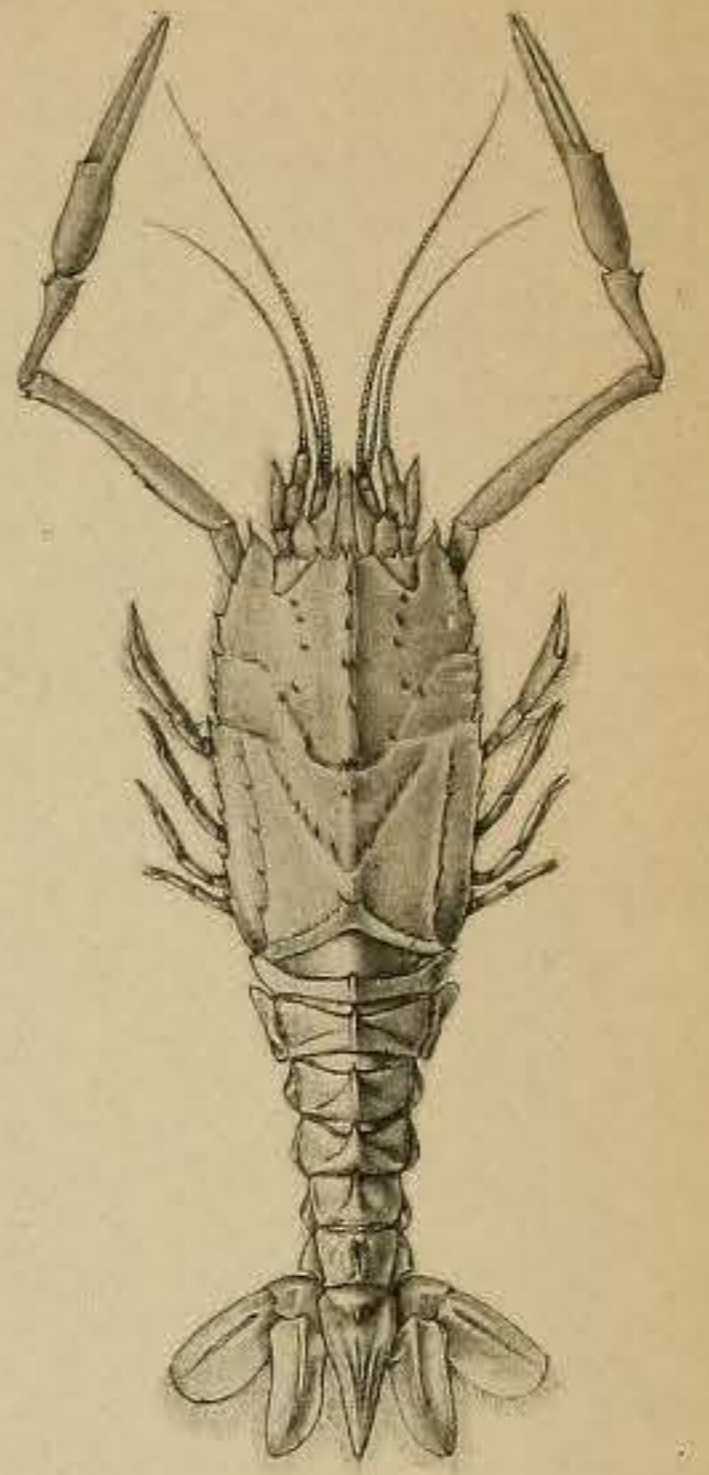
1b x 2.



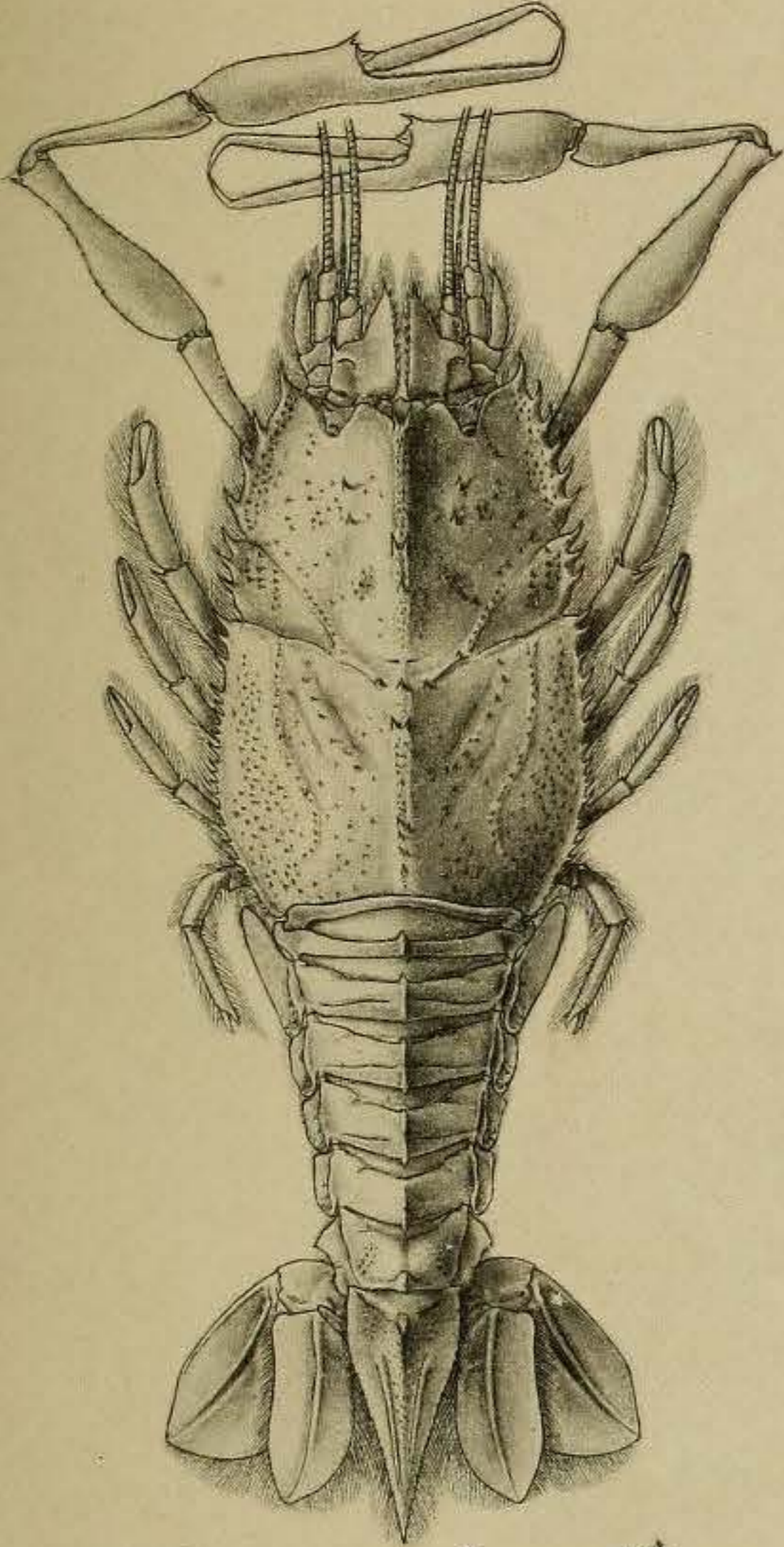
2b x 2.



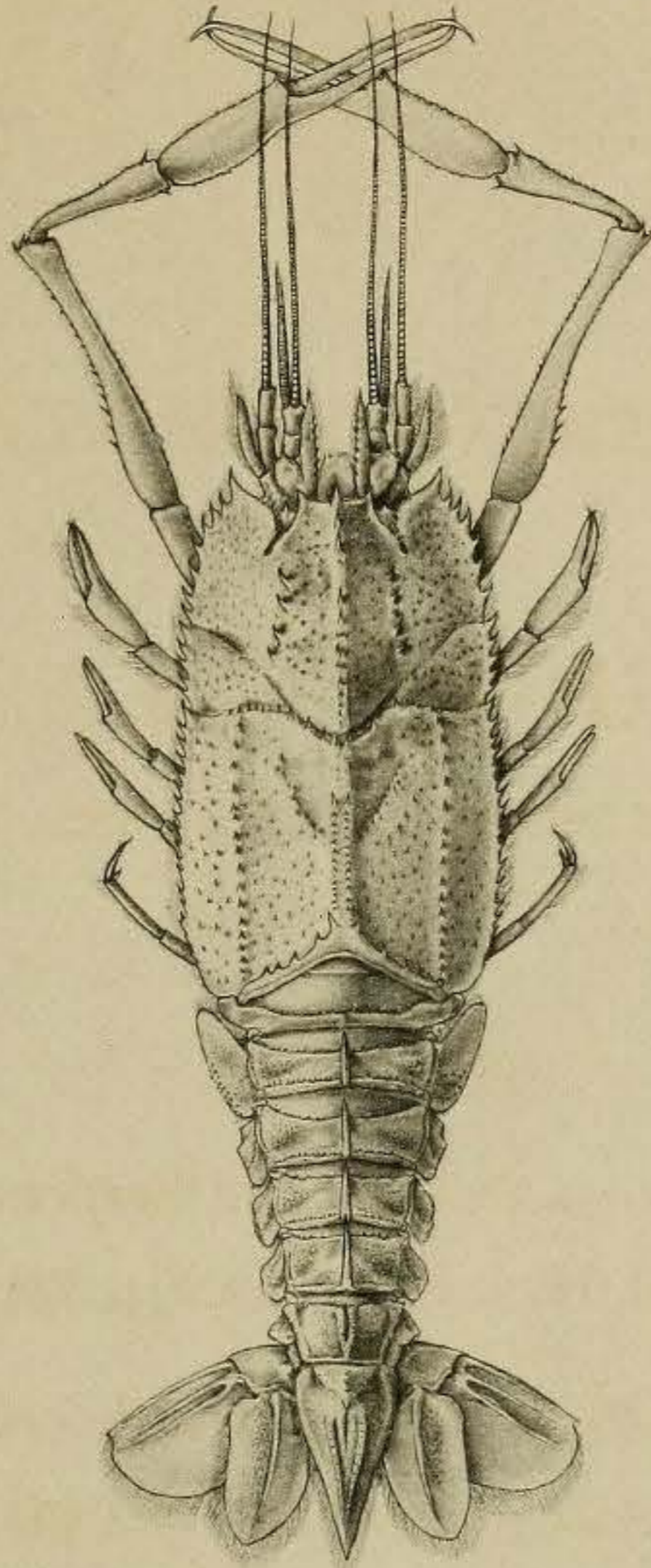
3b x 2.



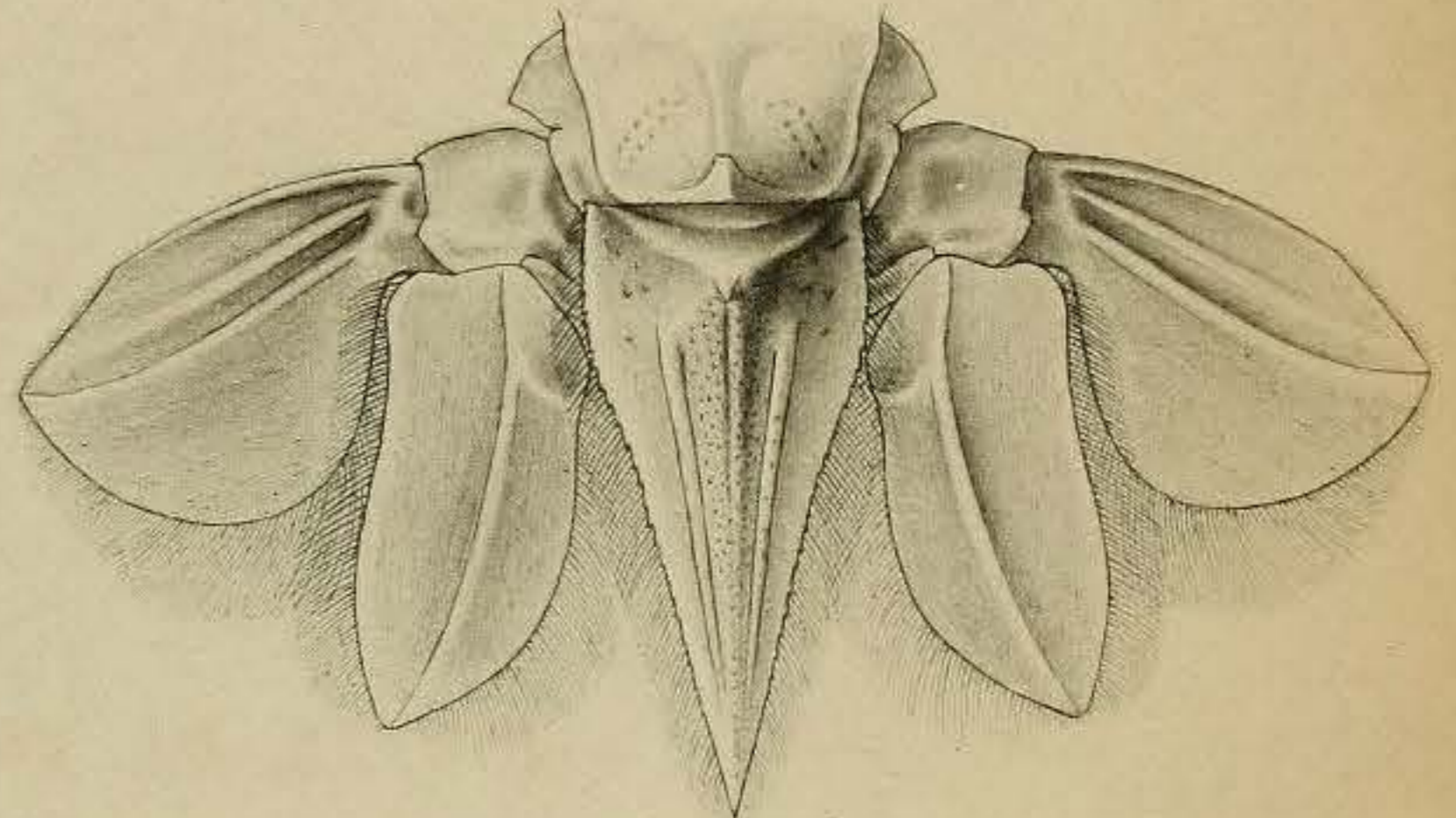
3.



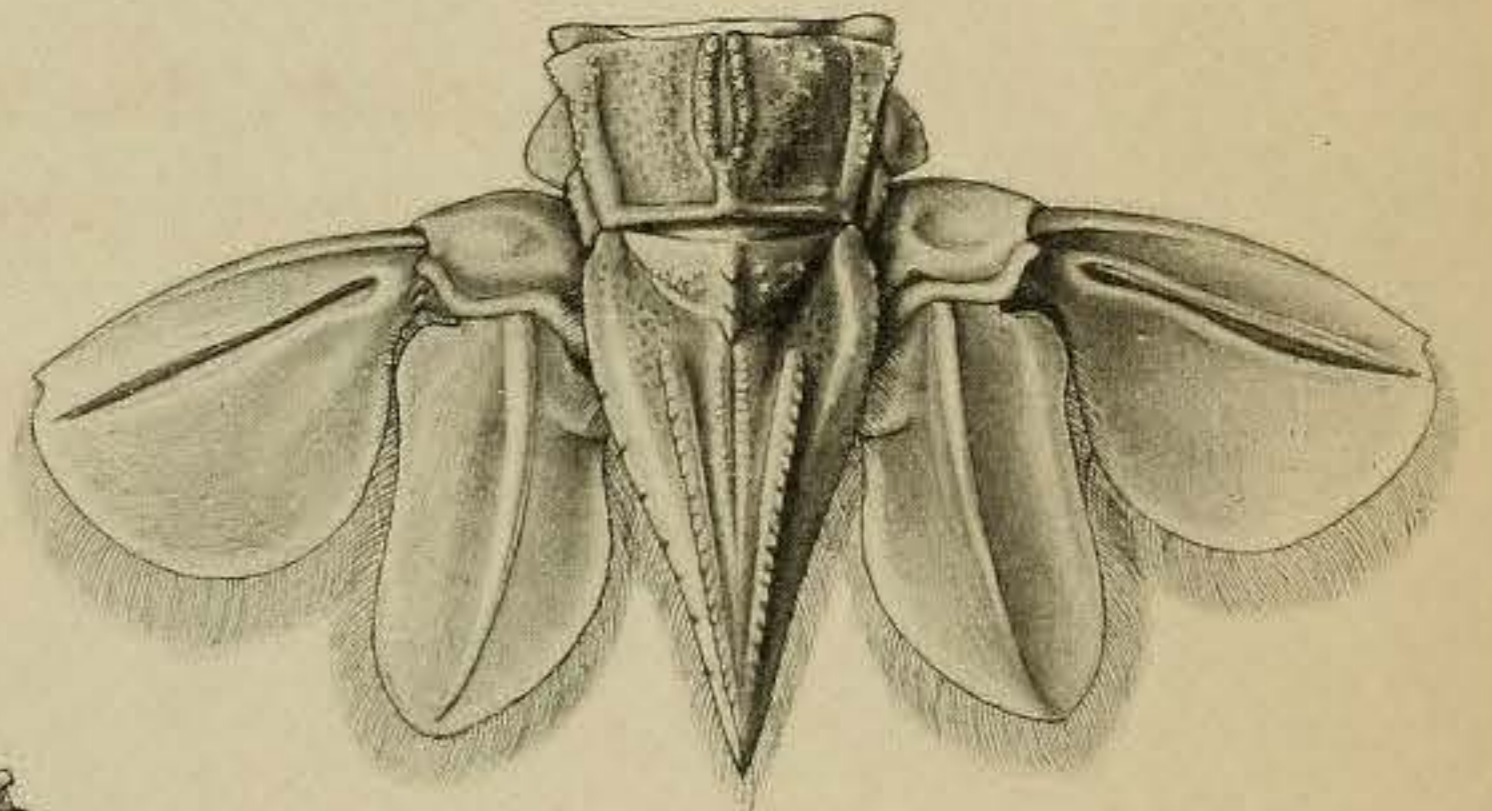
1.



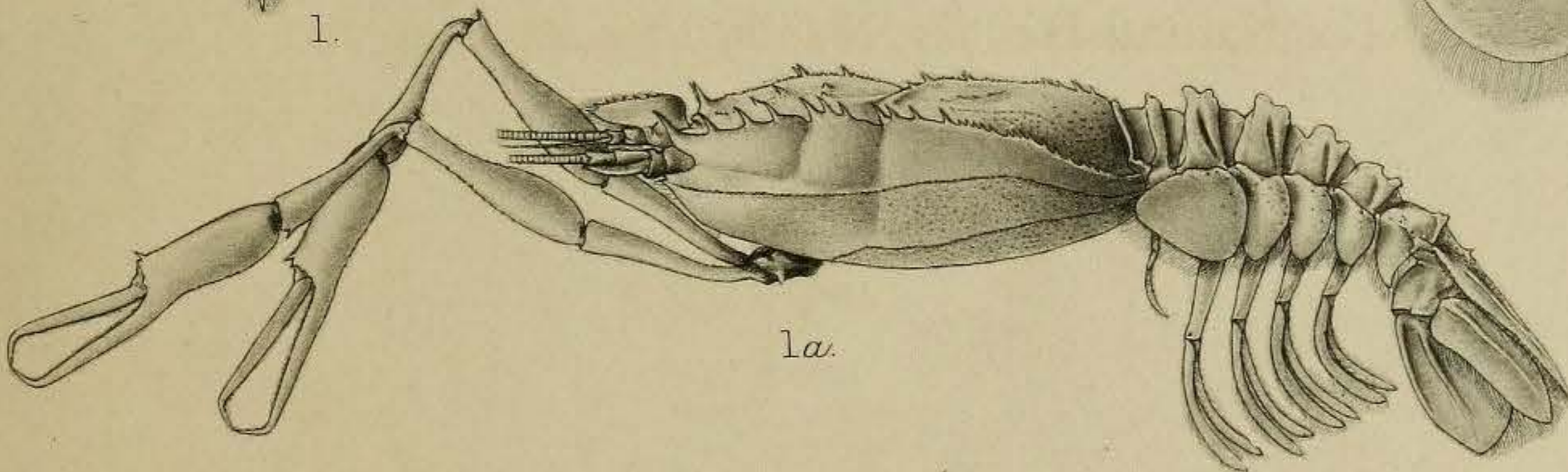
2.



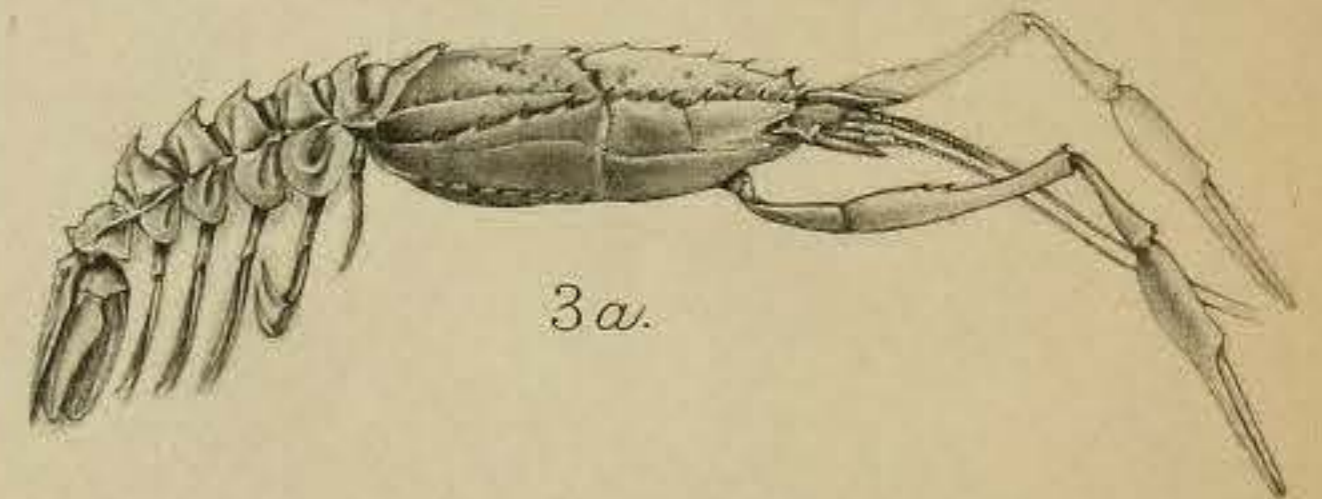
1c x 2.



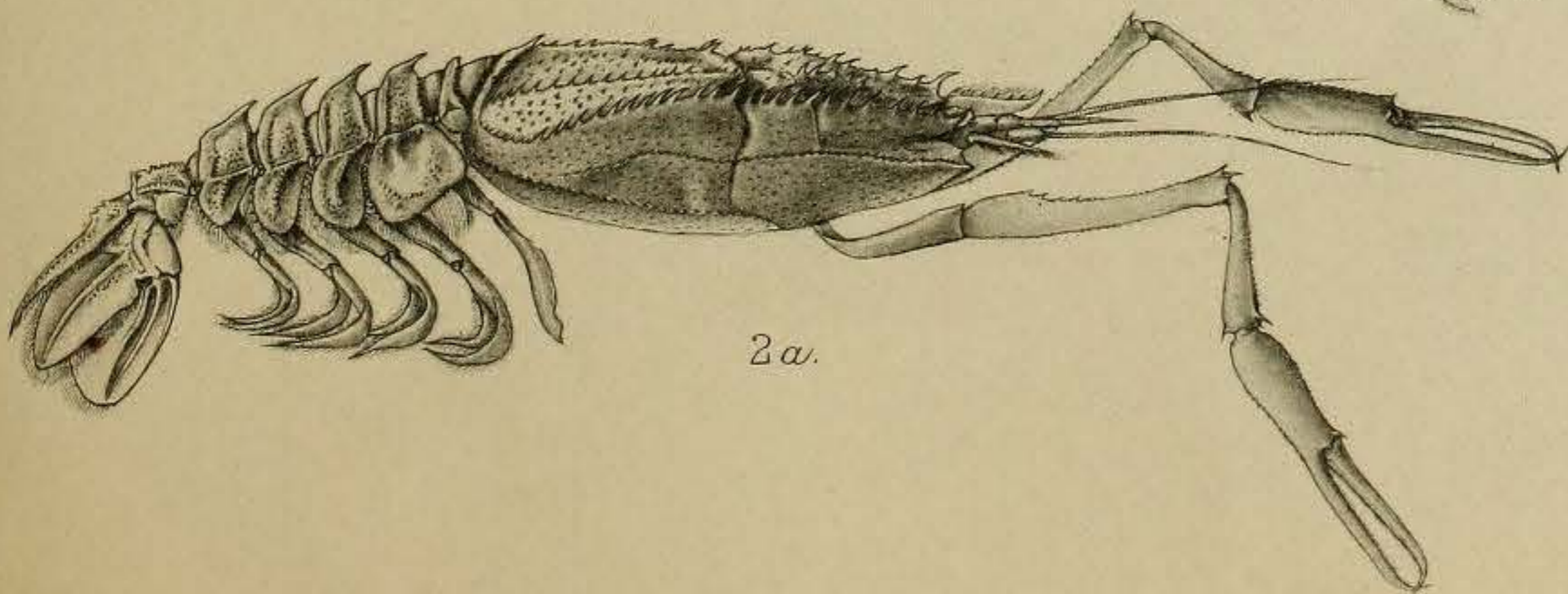
2c x 2.



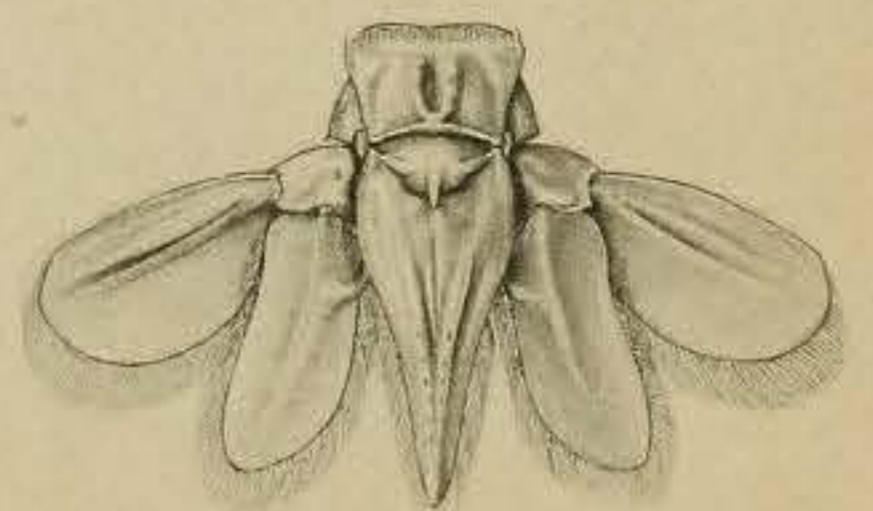
1a.



3a.



2a.



3c x 2.

1. Pentacheles carpenteri, ♀. 2. Pentacheles hextii, ♂. 3. Pentacheles andamanensis, ♀.

## EXPLANATION OF PLATES.

---

### CRUSTACEA.

[BY A. ALCOCK AND A. R. S. ANDERSON.]

---

#### PLATE XI.

*Fig. 1.*—*Munidopsis regia*, Alcock and Anderson, ♂. Journal, Asiatic Society of Bengal, Vol. LXIII, pt. 2, No. 3, 1894, pp. 168, 169.

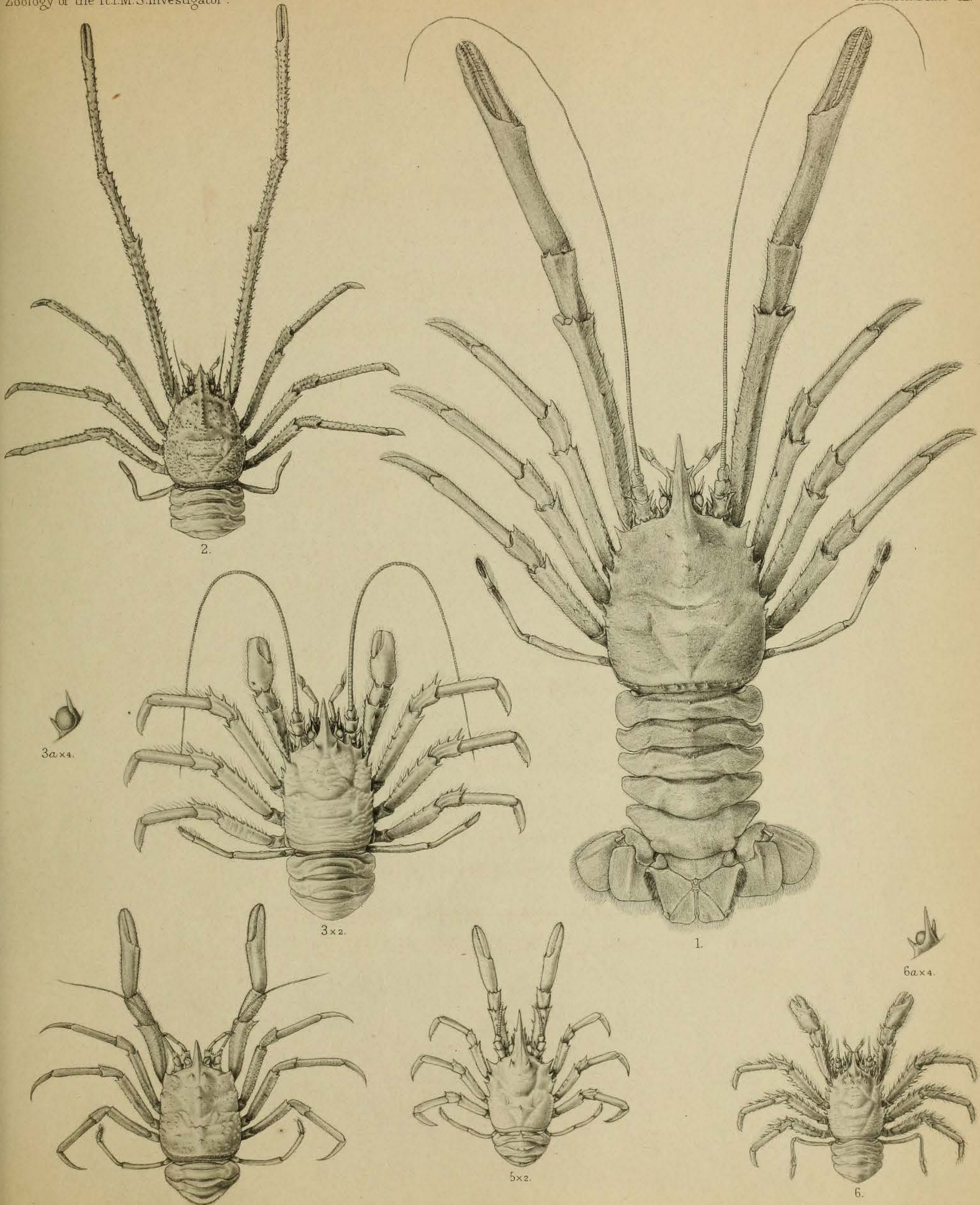
*Fig. 2.*—*Munidopsis trachypus*, Alcock and Anderson, ♀. Journal, Asiatic Society of Bengal, Vol. LXIII, pt. 2, No. 3, 1894, pp. 169, 170.

*Figs. 3, 3a.*—*Munidopsis ciliata*, Wood-Mason, ♂. Annals and Magazine of Natural History, February, 1891, pp. 200, 201.

*Fig. 4.*—*Munidopsis unguifera*, Alcock and Anderson, ♀. Journal, Asiatic Society of Bengal, Vol. LXIII, pt. 2, No. 3, 1894, p. 172.

*Fig. 5.*—*Munidopsis triæna*, Alcock and Anderson, ♀. Journal, Asiatic Society of Bengal, Vol. LXIII, pt. 2, No. 3, 1894, p. 168.

*Figs. 6, 6a.*—*Munidopsis centrina*, Alcock and Anderson, ♀. Journal, Asiatic Society of Bengal, Vol. LXIII, pt. 2, No. 3, 1894, pp. 170, 171.



1. *Munidopsis regia*, ♂. 2. *Munidopsis trachypus*, ♀. 3. *Munidopsis ciliata*, ♂.  
 4. *Munidopsis unguifera*, ♀. 5. *Munidopsis triana*, ♀. 6. *Munidopsis centrina*, ♀.



## EXPLANATION OF PLATES.

---

### CRUSTACEA.

[BY A. ALCOCK AND A. R. S. ANDERSON.]

---

#### PLATE XII.

**Fig. 1.**—*Munida tricarinata*, Alcock, ♀. Annals and Magazine of Natural History, April, 1894, pp. 324-326.

**Fig. 2.**—*Munidopsis poseidonia*, Alcock and Anderson, ♀. Journal, Asiatic Society of Bengal, Vol. LXIII, pt. 2, No. 3, 1894, pp. 167, 168.

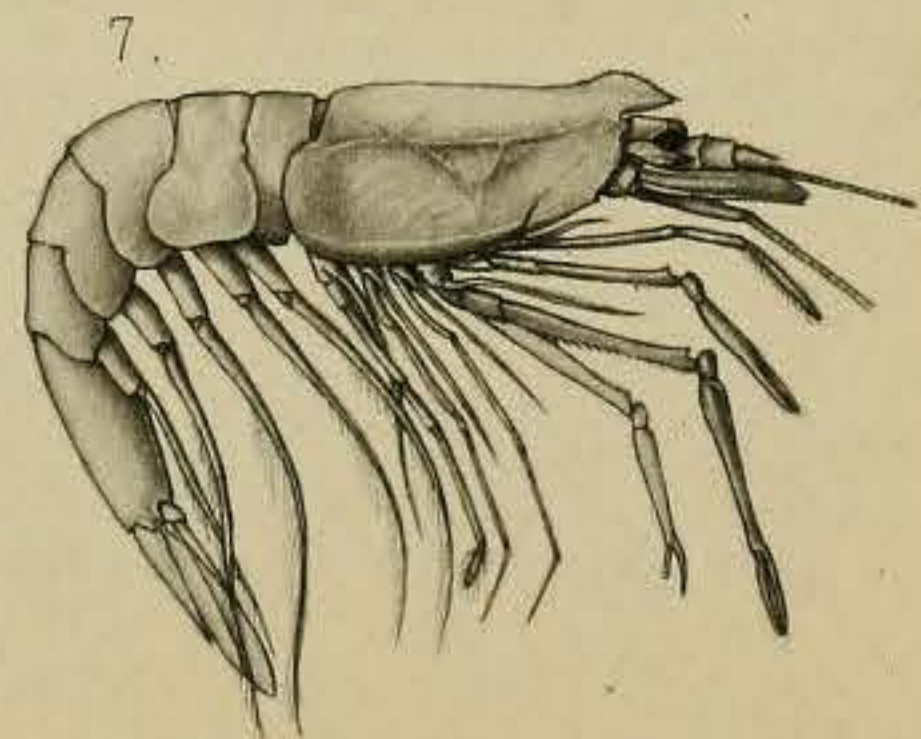
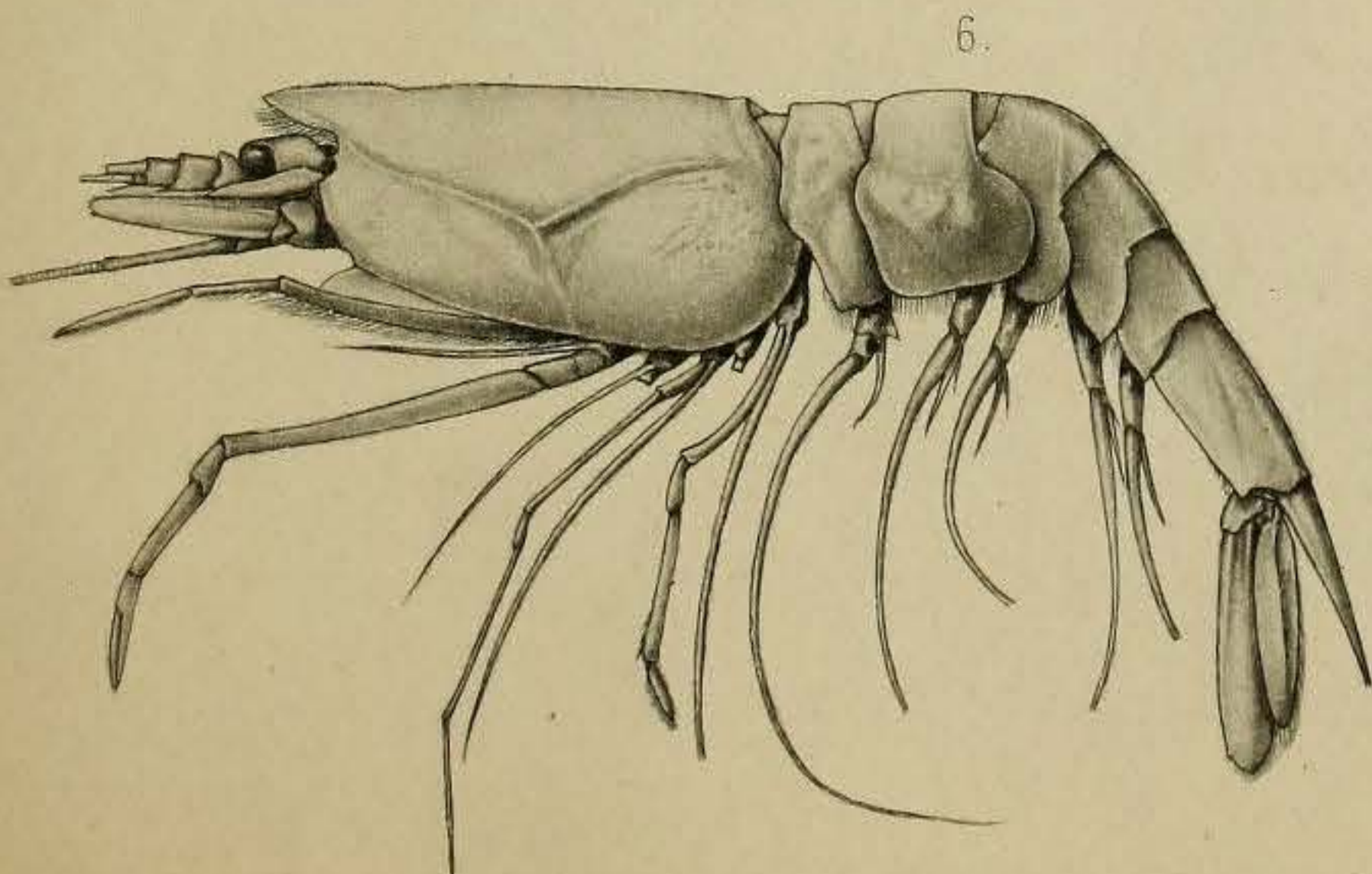
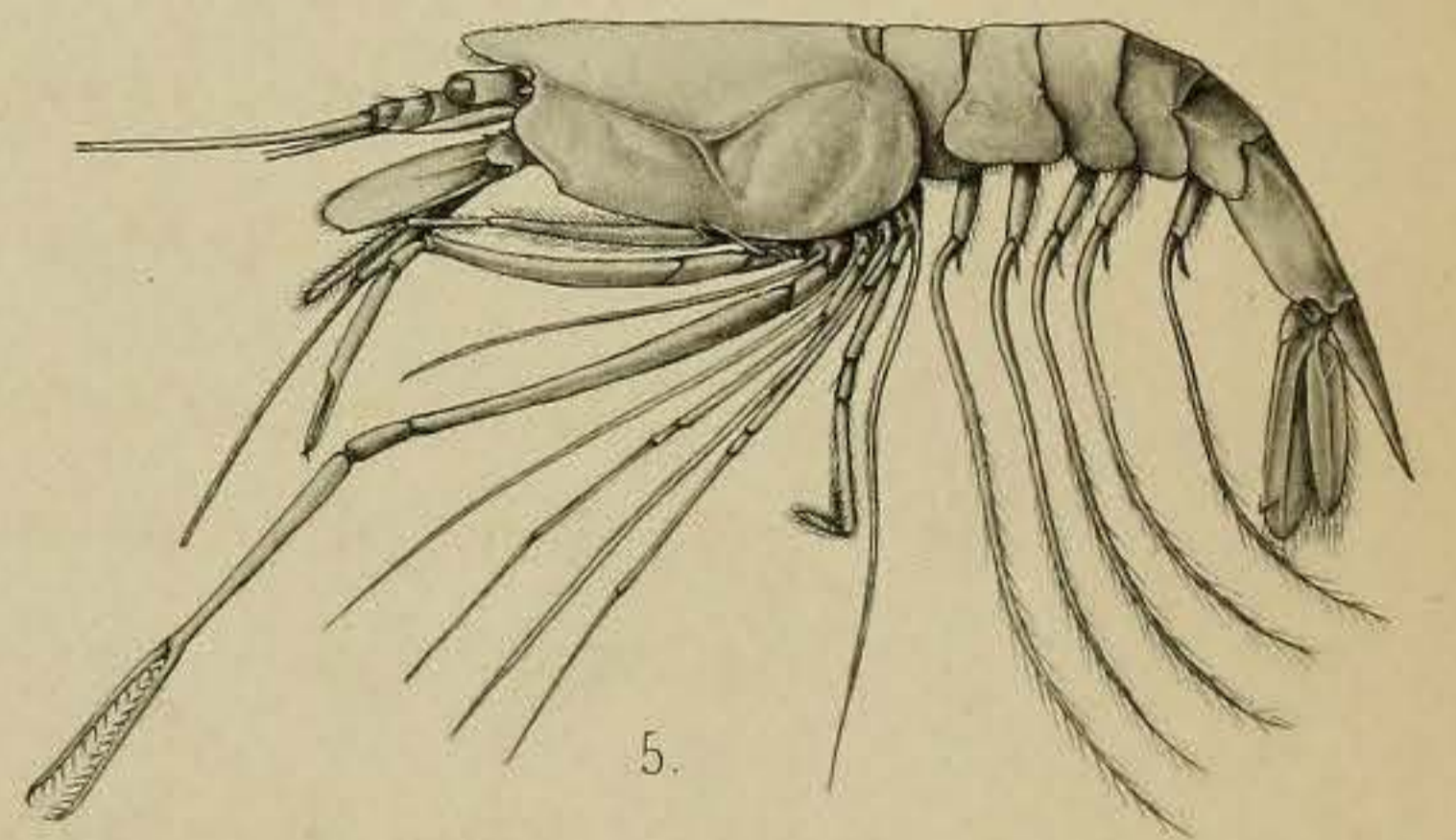
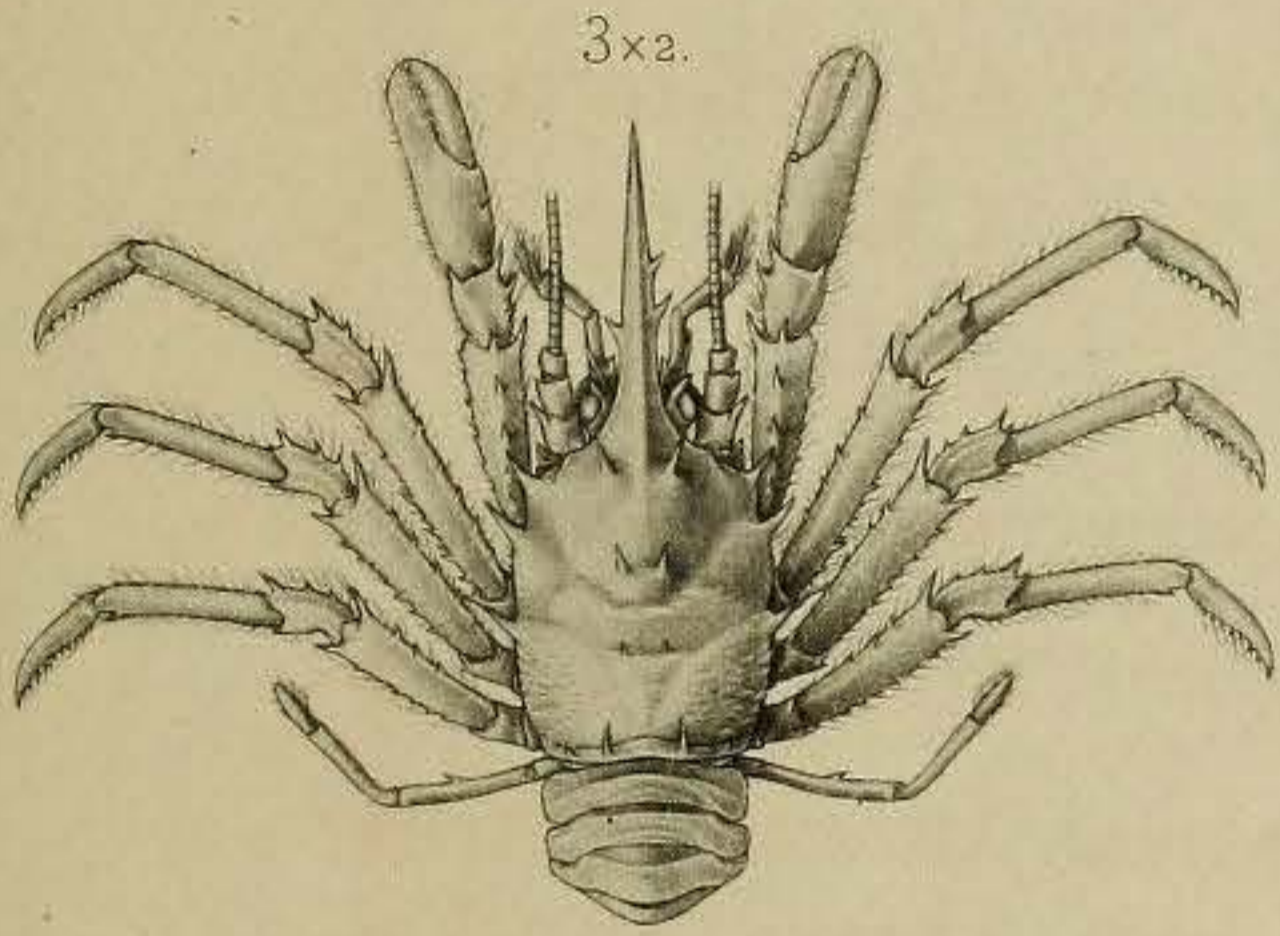
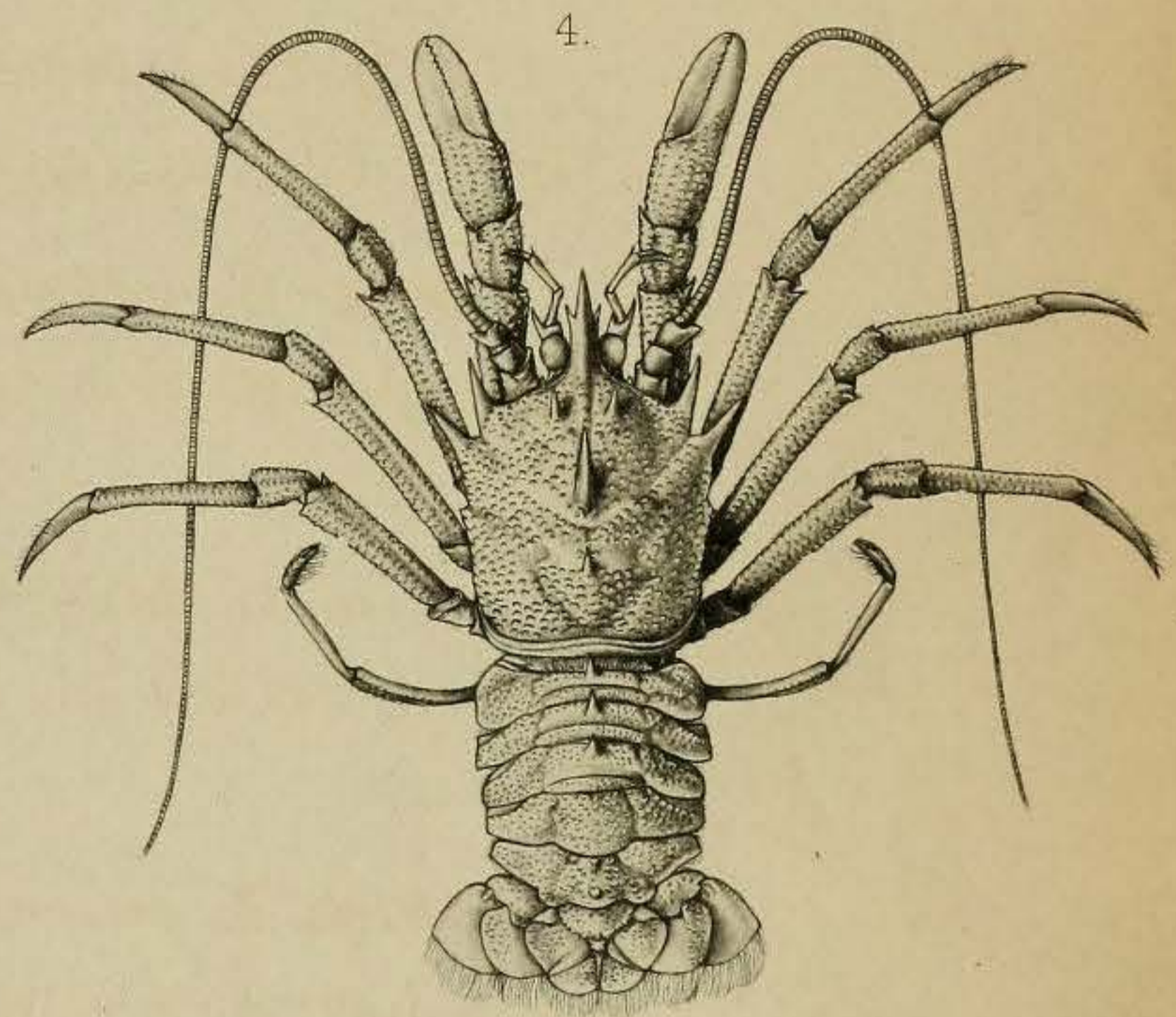
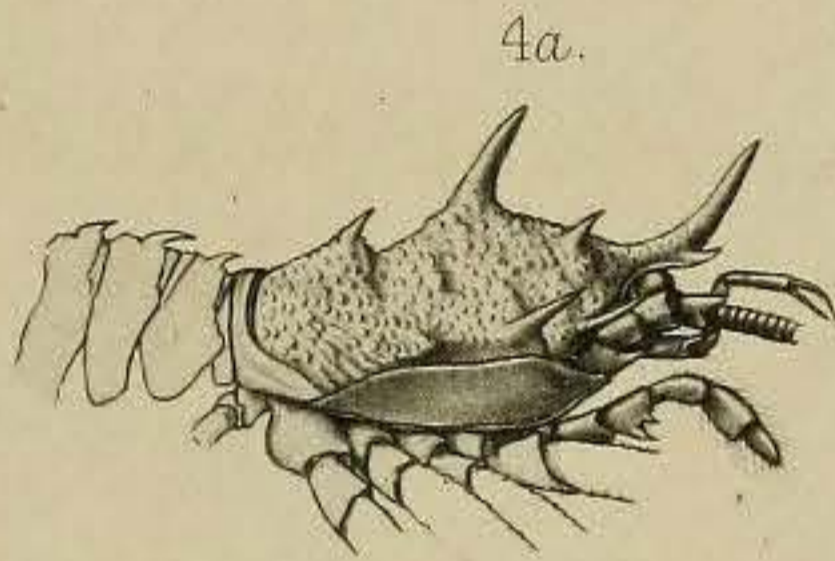
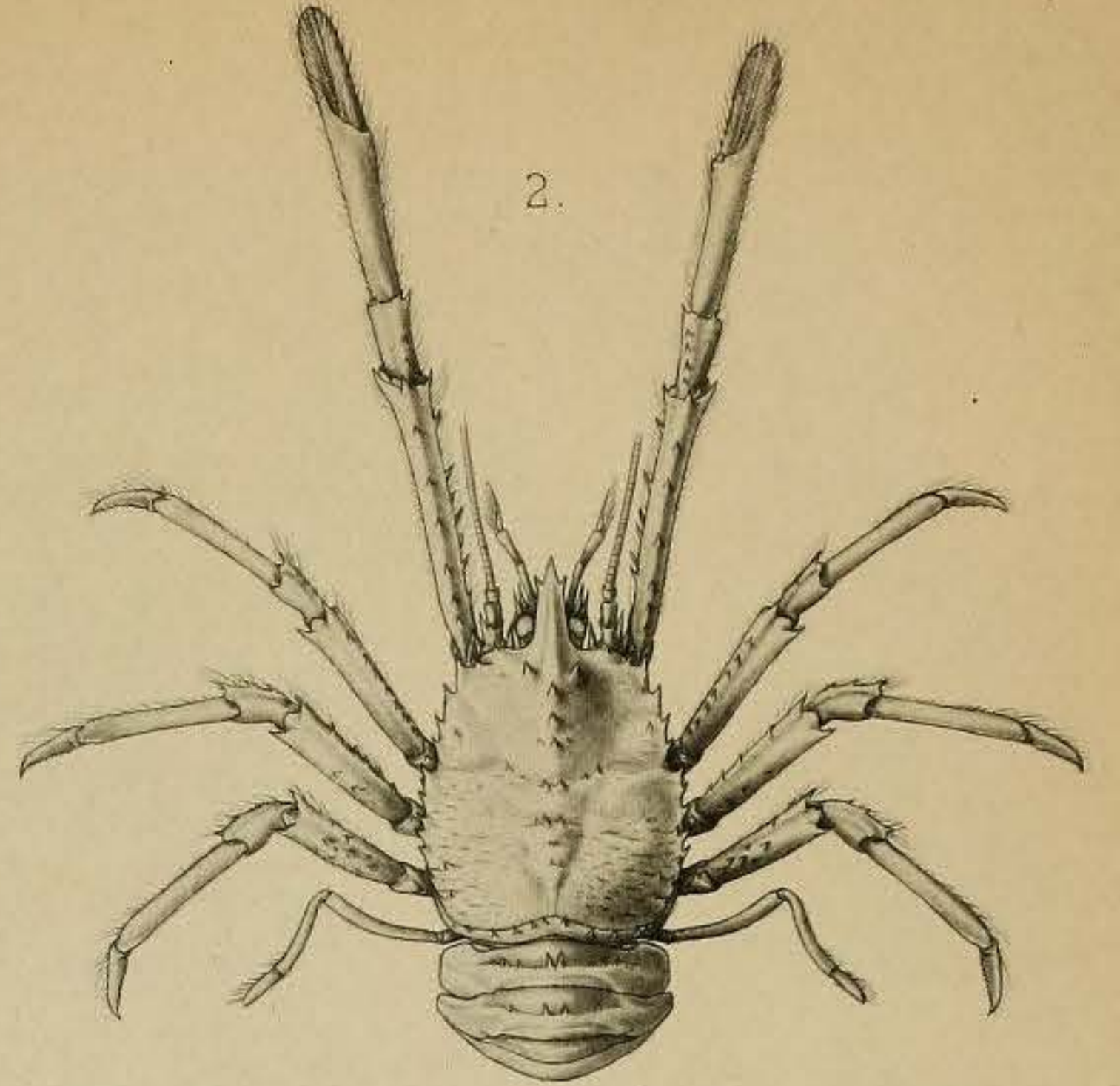
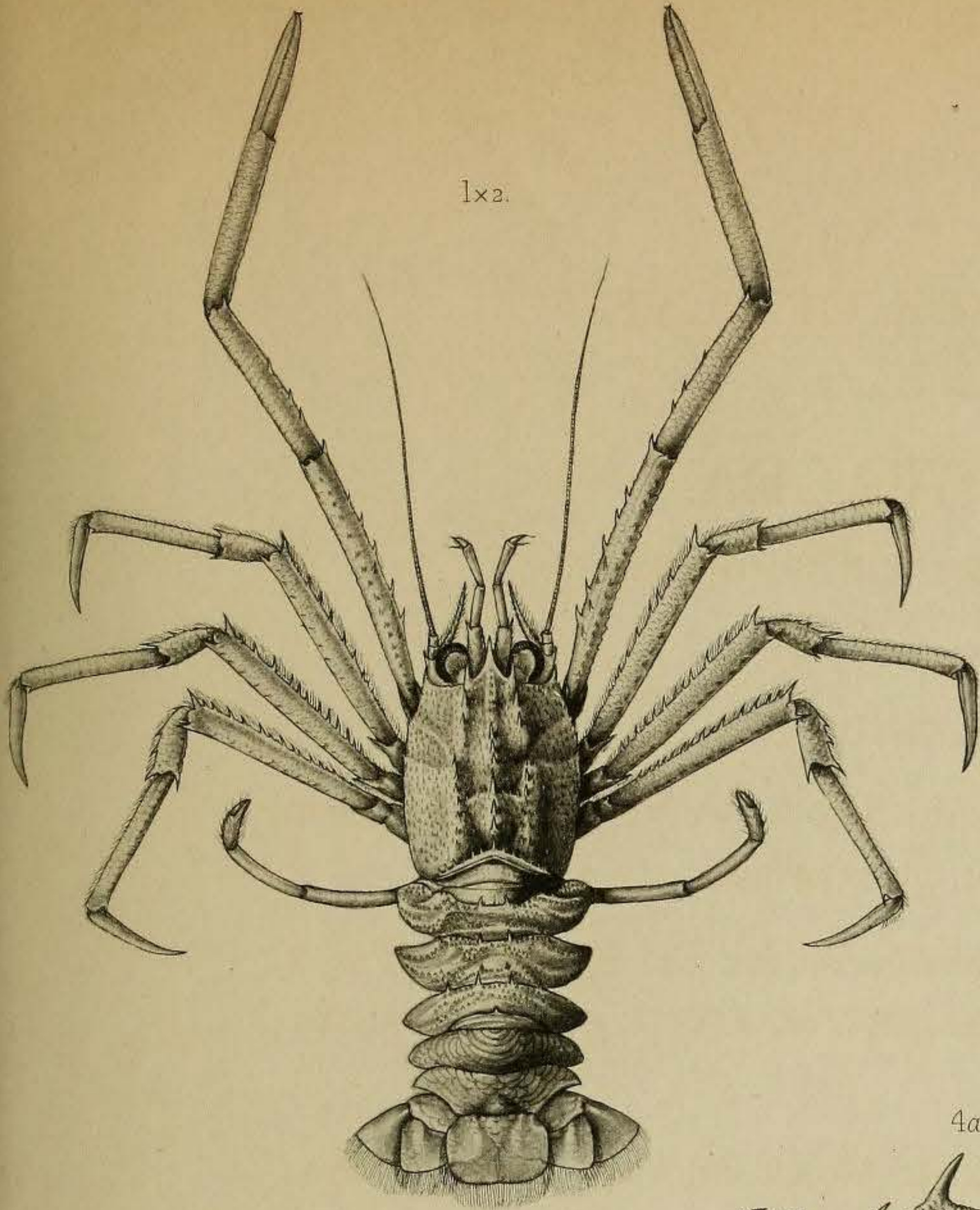
**Fig. 3.**—*Munidopsis arietina*, Alcock and Anderson, ♀. Journal, Asiatic Society of Bengal, Vol. LXIII, pt. 2, No. 3, 1894, pp. 171, 172.

**Figs. 4, 4a.**—*Galacantha investigatoris*, Alcock and Anderson, ♀. Journal, Asiatic Society of Bengal, Vol. LXIII, pt. 2, No. 3, 1894, p. 173.

**Fig. 5.**—*Psathyrocaris plumosa*, Alcock and Anderson. Journal, Asiatic Society of Bengal, Vol. LXIII, pt. 2, No. 3, 1894, p. 159.

**Fig. 6.**—*Psathyrocaris platyophthalmus*, Alcock and Anderson, ♀. Journal, Asiatic Society of Bengal, Vol. LXIII, pt. 2, No. 3, 1894, p. 158.

**Fig. 7.**—*Psathyrocaris infirma*, Alcock and Anderson. Journal, Asiatic Society of Bengal, Vol. LXIII, pt. 2, No. 3, 1894, pp. 159, 160.



1. *Munida tricarinata*, ♀, x2. 2. *Munidopsis poseidonia*, ♀. 3. *Munidopsis arietina*, ♀, x2. 4. *Galacantha investigatoris*, ♀.  
5. *Psathyrocaris plumosa*. 6. *Psathyrocaris platyophthalmus*. 7. *Psathyrocaris infirma*.

## EXPLANATION OF PLATES.

### CRUSTACEA.

[BY A. ALCOCK AND A. R. S. ANDERSON.]

#### PLATE XIII.

**Fig. 1.**—*Munidopsis scobina*, Alcock, ♂. Annals and Magazine of Natural History, April, 1894, pp. 330, 331.

**Fig. 2.**—*Munida militaris*, Hend., var. *andamanica*, Alcock, ♂. Annals and Magazine of Natural History, April, 1894, pp. 321, 322.

**Fig. 3.**—*Munida squamosa*, Hend., var. *prolixa*, Alcock, ♂. Annals and Magazine of Natural History, April, 1894, pp. 322–324.

**Fig. 4.**—*Elasmonotus cylindrophthalmus*, Alcock, ♀. Annals and Magazine of Natural History, April, 1894, pp. 333, 334.

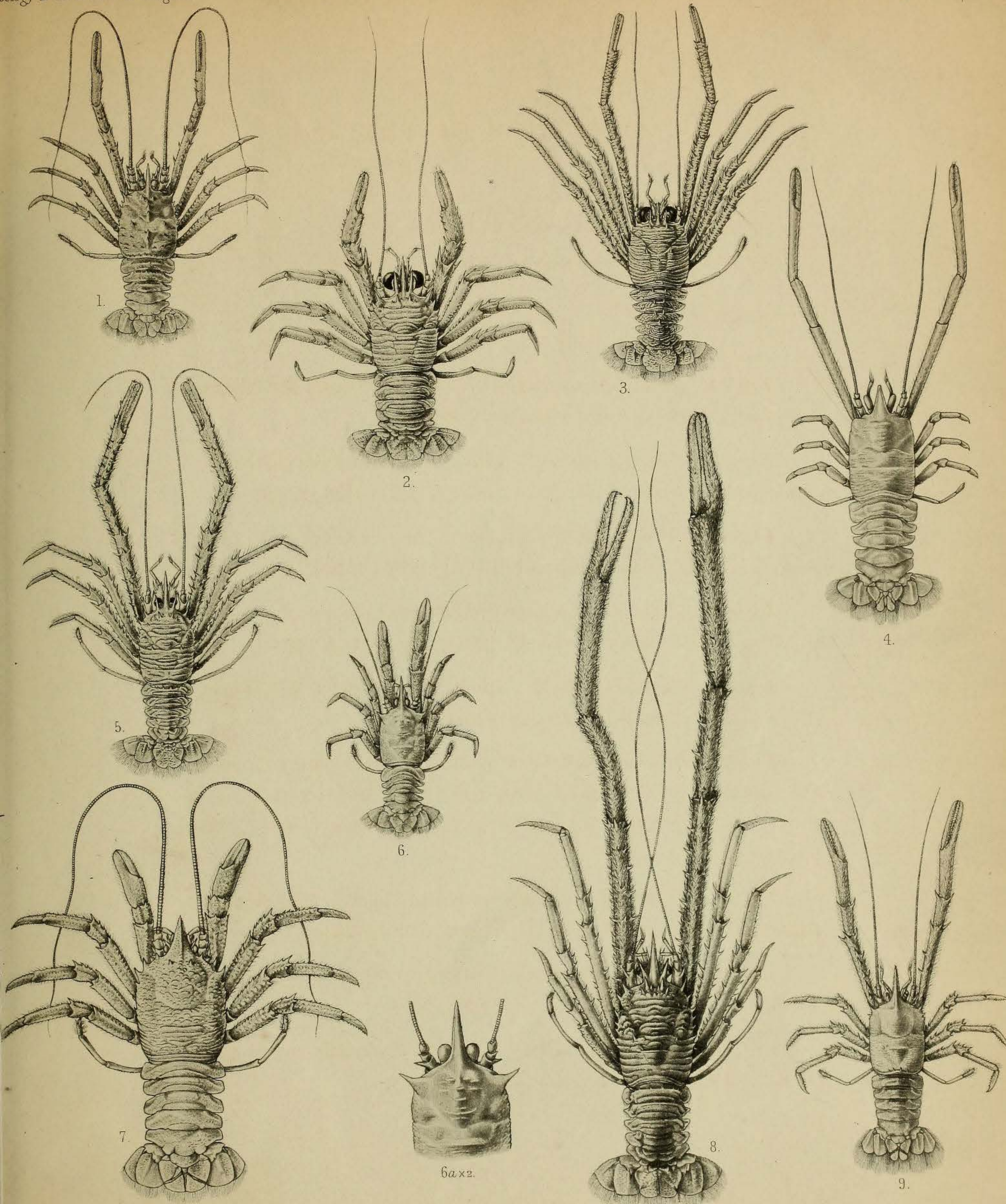
**Fig. 5.**—*Munida microps*, Alcock, ♂. Annals and Magazine of Natural History, April, 1894, pp. 326, 327.

**Figs. 6, 6a.**—*Munidopsis stylirostris*, Wood-Mason, ♂. Annals and Magazine of Natural History, February, 1891, p. 201; and Alcock, Annals and Magazine of Natural History, April, 1894, pp. 328, 329.

**Fig. 7.**—*Munidopsis subsquamosa*, Hend., var. *pallida*, Alcock, ♂. Annals and Magazine of Natural History, April, 1894, pp. 331–333.

**Fig. 8.**—*Munida lasiocheles*, Alcock, ♂. Annals and Magazine of Natural History, April, 1894, pp. 327, 328.

**Fig. 9.**—*Munidopsis dasypus*, Alcock, ♀. Annals and Magazine of Natural History, April, 1894, pp. 329, 330.



1. *Munidopsis scobina*, ♂. 2. *Munida militaris*, Hend. Var. *andamanica*, ♂. 3. *Munida squamosa*, Hend. Var. *prolixa*, ♂. 4. *Elasmonotus cylindrophthalmus*, ♀ × 2.  
 5. *Munida microps*, ♂. 6. *Munidopsis stylirostris*, ♂. 7. *Munidopsis subsquamosa*, Hend. Var. *pallida*, ♂. 8. *Munida lasiocheles*, ♂. 9. *Munidopsis dasypus*, ♀.

## EXPLANATION OF PLATES.

### CRUSTACEA.

[BY A. ALCOCK AND A. R. S. ANDERSON.]

#### PLATE XIV.

**Figs. 1, 1a.**—*Homola megalops*, Alcock, ♂. Annals and Magazine of Natural History, May, 1894, pp. 408, 409.

**Fig. 2.**—*Aethusa indica*, Alcock, ♀. Annals and Magazine of Natural History, May, 1894, pp. 405, 406.

**Fig. 3.**—*Scyramathia livermorii*\* (Wood-Mason), ♀. Annals and Magazine of Natural History, March, 1891, p. 260.

**Figs. 4, 4a.**—*Hypsophrys superciliosa*, Wood-Mason, ♀. Annals and Magazine of Natural History, March, 1891, pp. 269, 270.

**Fig. 5.**—*Aethusa pygmæa*, Alcock, ♀. Annals and Magazine of Natural History, May, 1894, p. 406.

**Fig. 6.**—*Platypilumnus gracilipes*, Wood-Mason, ♀. Alcock, Annals and Magazine of Natural History, May, 1894, pp. 401, 402.

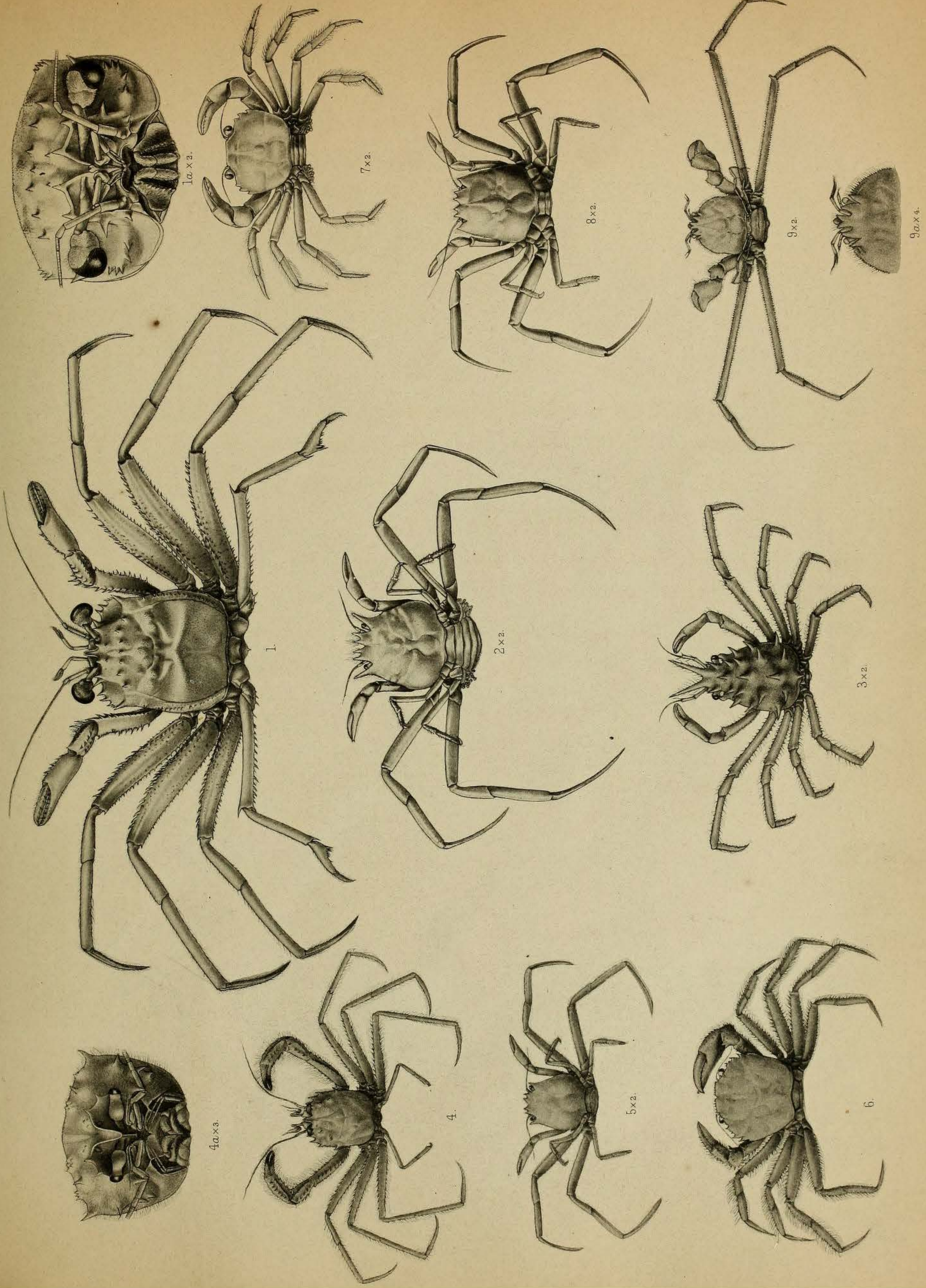
**Fig. 7.**—*Nectopanope longipes*, Wood-Mason, ♀. Annals and Magazine of Natural History, March, 1891, pp. 262–264.

**Fig. 8.**—*Aethusa andamanica*, Alcock, ♂. Annals and Magazine of Natural History, May, 1894, p. 405.

**Figs. 9, 9a.**—*Cyonomops glaucoma*, Alcock, ♀. Annals and Magazine of Natural History, May, 1894, pp. 406, 407.

---

\*=*Anamathia livermorii*, Wood-Mason, *l. c.* := *Scyramathia pulchra*, Miers, *v.* Alcock, *Journal, Asiatic Society of Bengal*, Vol. LXIV, pt. 2, No. 2, 1895, pp. 202, 203.



1. *Homarus americanus* L. 2. *Stomatopoda* sp. 3. *Homarus americanus* L. 4. *Homarus americanus* L. 5. *Homarus americanus* L. 6. *Homarus americanus* L. 7. *Homarus americanus* L. 8. *Homarus americanus* L. 9. *Homarus americanus* L. 9a. *Homarus americanus* L. 10a. *Homarus americanus* L.

EXPLANATION OF PLATES.

—♦—  
CRUSTACEA.

[BY A. ALCOCK AND A. R. S. ANDERSON.]

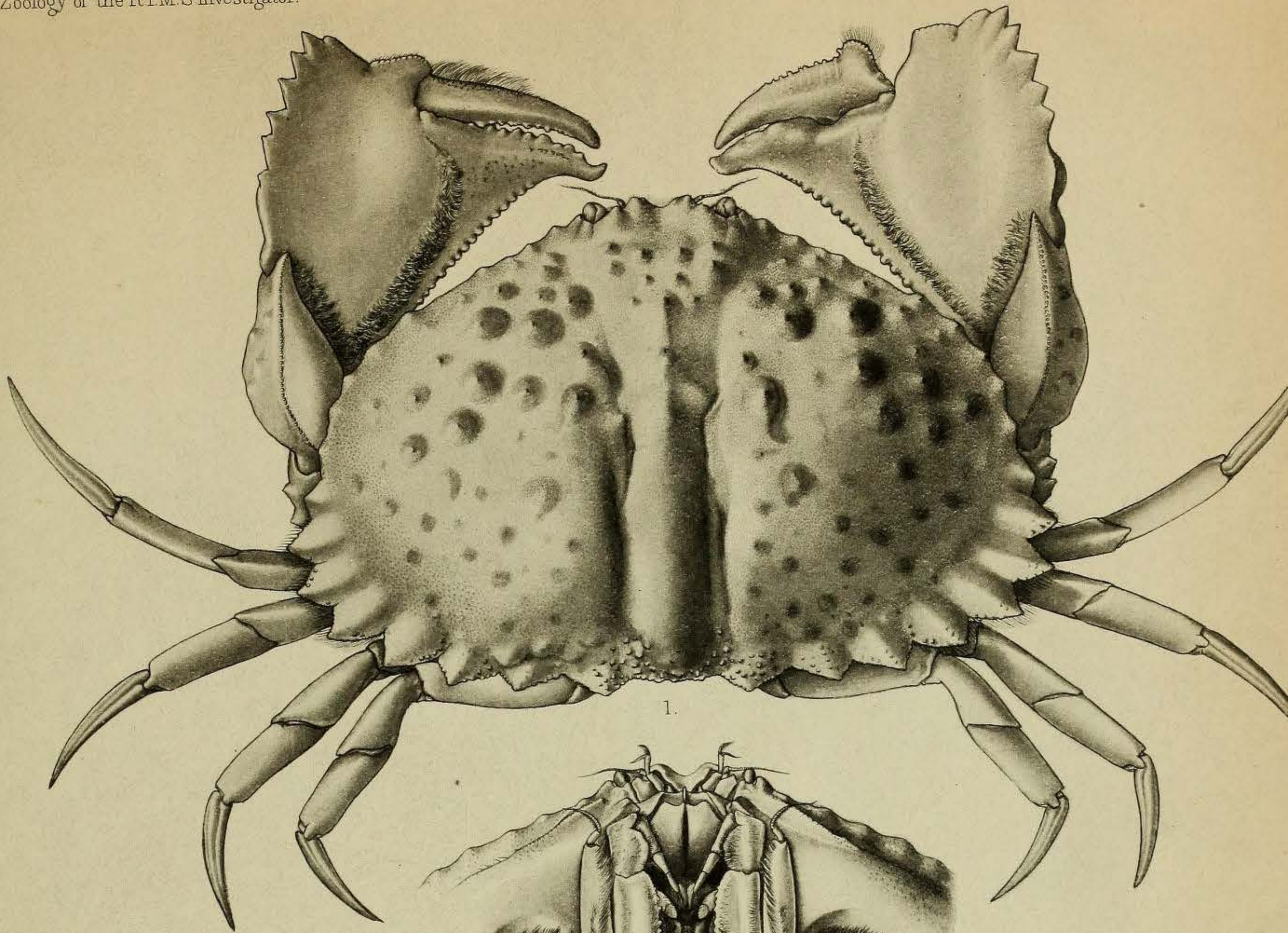
—♦—  
PLATE XV.

**Figs. 1, 1a.**—*Calappa exanthematos*, Alcock and Anderson,  
♂. Journal, Asiatic Society of Bengal, Vol. LXIII, pt. 2, No. 3,  
1894, pp. 177, 178.

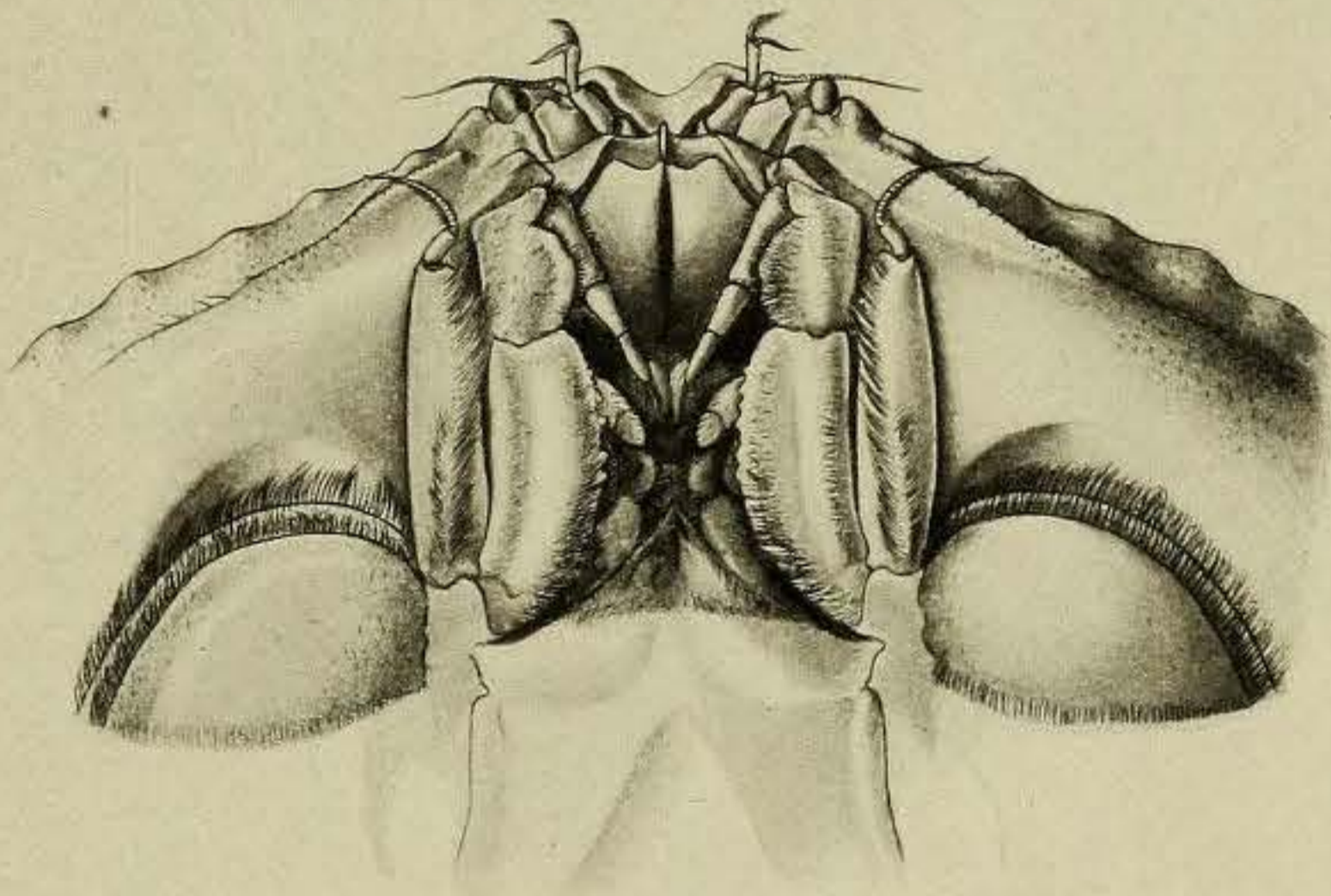
**Figs. 2, 2a, 2b.**—*Ptenoplax notopus*,\* (Alcock and Anderson),  
♂. Journal, Asiatic Society of Bengal, Vol. LXIII, pt. 2, No. 3,  
1894, pp. 180–183, pl. ix., figs. 3, 3a, 3b.

---

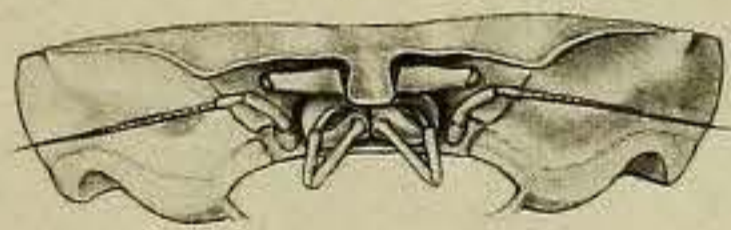
\* *Ptenoplax notopus* = *Archæoplax notopus*, Alcock and Anderson, *loc. cit.* In the figure (pl. ix, 3a) in the Journal of the Asiatic Society of Bengal, *tom. cit.*, the external maxillipeds are removed for the clearer display of the mouth and deeper mouth-parts.



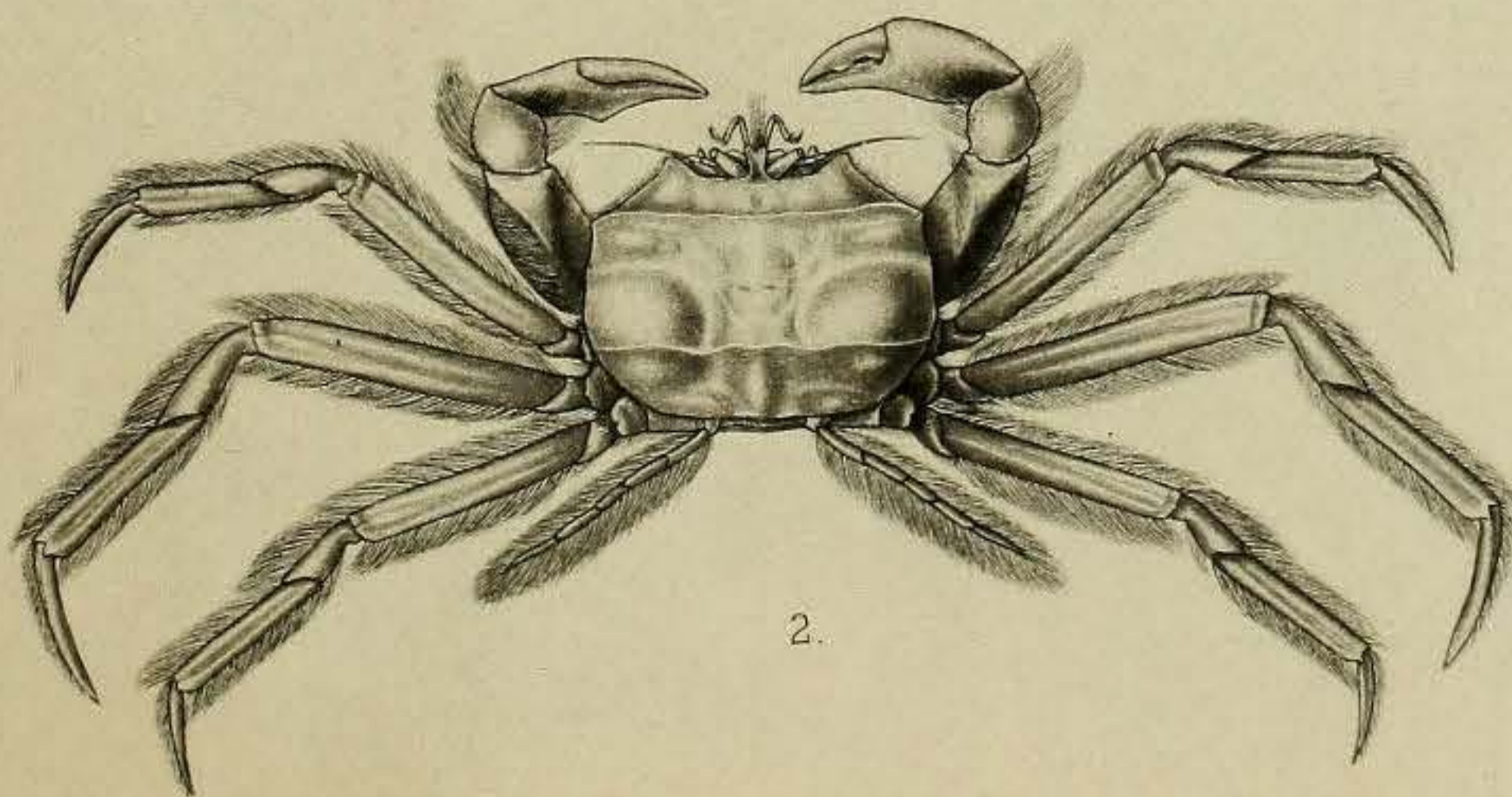
1.



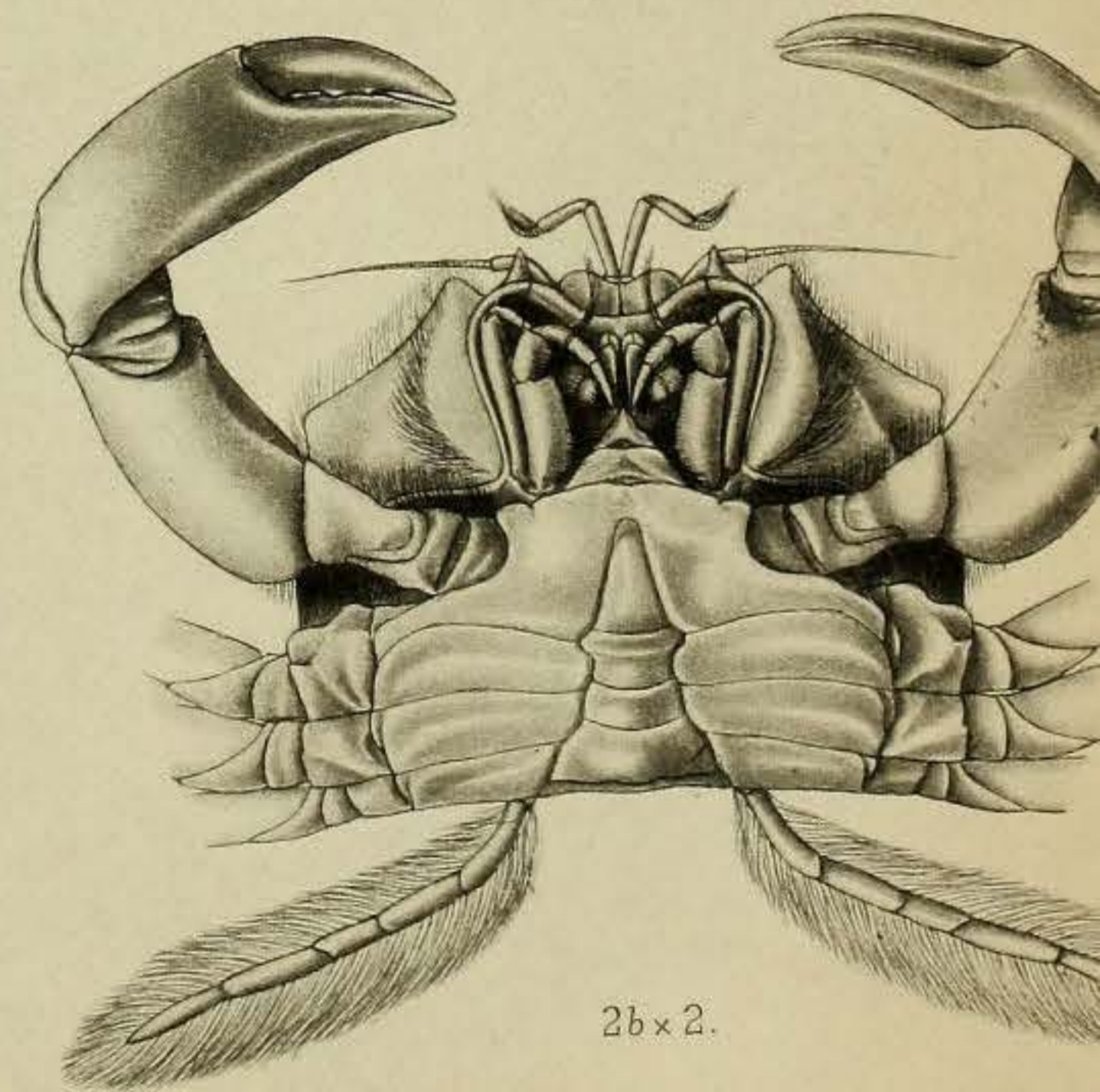
1a.



2a.



2.



2b x 2.

1. *Calappa exanthematosus*.

2. *Ptenoplax notopus*.