

EPACANTHION BREVISPICULUM n.sp.

(Fig. 26, a-b.)

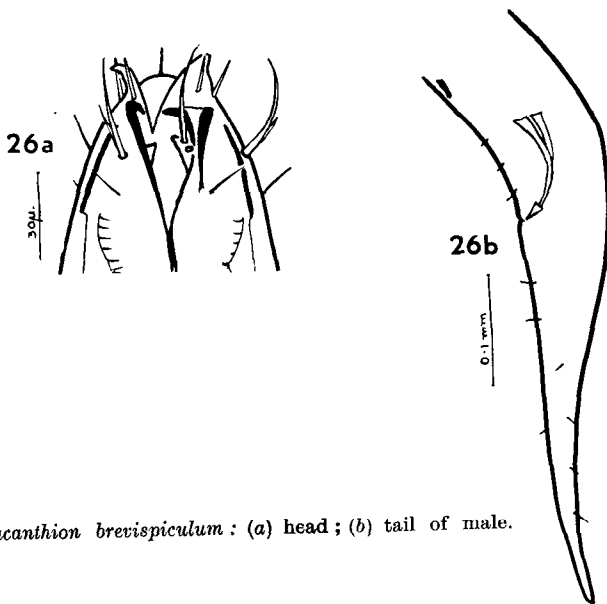
Stations : 39, 42.

Female (1x) : L = 5.5 mm. ; α = 48 ; β = 5.5 ; γ = 16 ; V = 56%.

Male (1x) : L = 5.6 mm. ; α = 46.2 ; β = 5.1 ; γ = 16.4.

Juvenile (1x) : L = 4.8 mm. ; α = 41 ; β = 4.4 ; γ = 12.6.

The lips are large and striated ; each has two setae, 12μ long. The six longer cephalic setae are 40μ long, nearly as long as the cephalic diameter ; the shorter are half the length of the longer. There are four cervical setae about 15μ long, in submedian positions, anterior to the posterior border of the cephalic capsule. This last is about 30μ long, and its posterior border was seen only in profile. The jaws are 20μ long ; the teeth are all of about equal length. The tail is 6.2 times the anal breadth in the juvenile, 5x in the female, and 4.2x in the male. The spicules are 90μ long, a little more than the anal breadth. The preanal organ is 20μ long, and lies a little more than a third of the tail length in front of the anus.



26. *Epacanthion brevispiculum* : (a) head ; (b) tail of male.

STATION 39 : 66° 10' S., 49° 41' E., T M L : 300 M.

Big haul characterized by silicious sponges with glass rope spicules. ***Synapta--like* Holothurian** common ; many Polyzoa of different species.

STATION 42 : 65° 50' S., 54° 23' E., T M L : 220 M.

Haul essentially as at Station 41, T M L.