

Viscosia cobbi Filipjev, 1918
(Fig. 109)

Description. Body length 2.3–2.8 mm. Maximum diameter 33–45 μm ($a = 62\text{--}78$). Six short and four slightly longer (6–7 μm or one-third of h.d.) cephalic setae. Right subventral tooth larger than remaining two, which are both prominent and single tipped. Amphids 11 μm wide, 0.5 h.d. (male); 7 μm , 0.33 h.d. (female). Tail 7 a.b.d., anterior quarter tapering, posterior part cylindrical, or often appearing cylindrical throughout.

Spicules fairly straight, 22–27 μm (1 a.b.d.). Two pairs of setae in front of cloaca, three pairs behind, one small seta either side of cloaca.

Distribution. Exe estuary; Strangford Lough, Northern Ireland (intertidal sand).

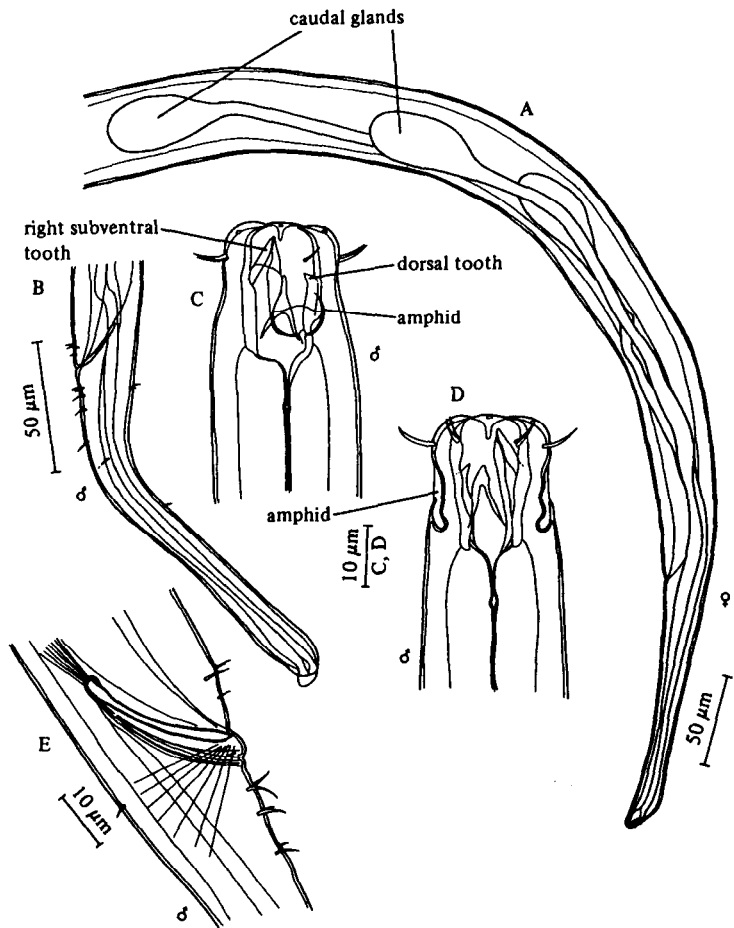


Fig. 109. *Viscosia cobbi*. A, Posterior end of female; B, Male tail; C, Male head (lateral); D, Male head (dorsal); E, Cloacal region. Original.