

Trissonchulus obtusus (Bresslau and Stekhoven, 1935)
(Fig. 75A, B, C)

Description. Body length 4.0–4.5 mm ($a = 64$ – 65). Head and buccal cavity similar to *T. benepapillosus*, but with rows of conical papillae on anterior end of body. Amphids cup-like, 0.26 times c.d. wide. Tail rounded, 1.2 a.b.d. long, caudal glands open ventrally, subterminal.

Spicules 1.2 a.b.d. long.

Gubernaculum 0.43 a.b.d., paired, swollen at distal ends. 4–5 precloacal supplements. Male with four pairs of papillae on tail.

Vulva at 49% of body length, female tail with two apical papillae.

Distribution. Isles of Scilly (*Laminaria* holdfasts).

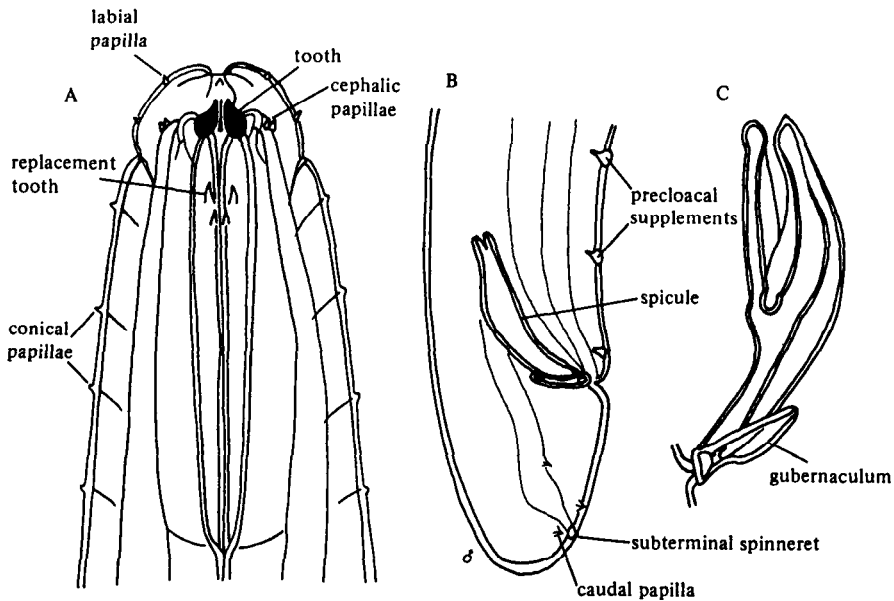


Fig. 75. *Trissonchulus obtusus*. A, Head of young specimen showing replacement teeth; B, Male tail; C, Spicules and gubernaculum (from Stekhoven, 1935).