

*Tricoma brevirostris* (Southern, 1914)  
(Fig. 228)

*Description* (from Southern, 1914). Body length 0.6 mm. Maximum diameter 36  $\mu\text{m}$  ( $a = 16$ ). 78 desmen. Cephalic setae 0.8 h.d. Head triangular with thickened cuticular walls.

Spicules curved, cloaca between desmen 68 and 69. Gubernaculum with dorsal apophysis.

*Distribution*. Clew Bay, West Ireland, single male (sublittoral sand and shells).

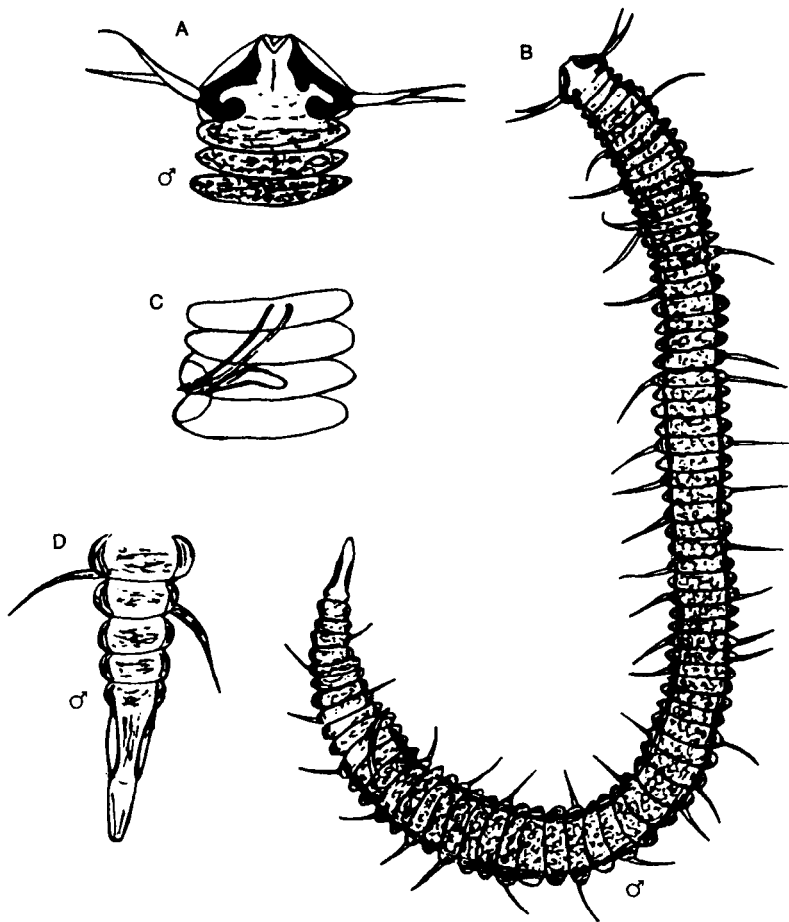


Fig. 228. *Tricoma brevirostris*. A, Male head; B, Entire male; C, Cloacal region; D, Male tail tip. From Southern (1914).