

*Symplocostoma tenuicolle* (Eberth, 1863)  
(Fig. 120)

*Description of male.* Body length 4.2–7.0 mm. Maximum diameter 55–60  $\mu\text{m}$  ( $a = 77$ –117). Cuticle smooth. Body strongly tapered at both ends. Head end slightly swollen, with a marked constriction behind the cephalic setae. Buccal cavity absent. Six small labial papillae. Cephalic setae 12 and 4  $\mu\text{m}$ . Amphids slit-like, 4  $\mu\text{m}$  wide, just anterior to the cephalic constriction. Large pigmented eyespot with paired ocelli 15  $\mu\text{m}$  from anterior. Oesophagus 0.12–0.19 times body length, expanding posteriorly. Excretory pore 0.12 times oesophagus length from anterior; nerve ring 0.57 times oesophagus length from anterior. Spicules curved, 160  $\mu\text{m}$  long (4.4 a.b.d.). Gubernaculum small, 40–51  $\mu\text{m}$  (1.1–1.2 a.b.d.). 38–47 precloacal supplements (simple ventral swellings) extending 615  $\mu\text{m}$  from cloaca. Tail conical, 4.8–4.9 a.b.d. long.

*Description of female.* Body length 5.1–6.1 mm. Maximum diameter 76–115  $\mu\text{m}$  ( $a = 45$ –80). Cuticle smooth. Body strongly attenuated anteriorly, less so posteriorly. Head not swollen; no cephalic constriction. Six cephalic setae 5  $\mu\text{m}$  long. Buccal cavity cylindrical, heavily cuticularised, with a large subventral tooth and a circle of denticles near the tip of this tooth. Amphids oval, 5.5  $\mu\text{m}$  wide, slightly displaced dorsally. Oval ocelli 16–18  $\mu\text{m}$  from anterior, eyespot smaller and less pigmented than in male. Oesophagus 0.19–0.2 times body length, expanded posteriorly. Excretory pore 0.08–0.09 times oesophagus length from anterior; nerve ring 0.48–0.53 times oesophagus length from anterior. Ovaries paired; vulva at 41–55% of body length. Tail evenly tapered, 4.5–6.1 a.b.d. long.

*Distribution.* West Ireland; North East England; Plymouth; Isles of Scilly (intertidal and subtidal seaweeds, holdfasts and polyzoa)..

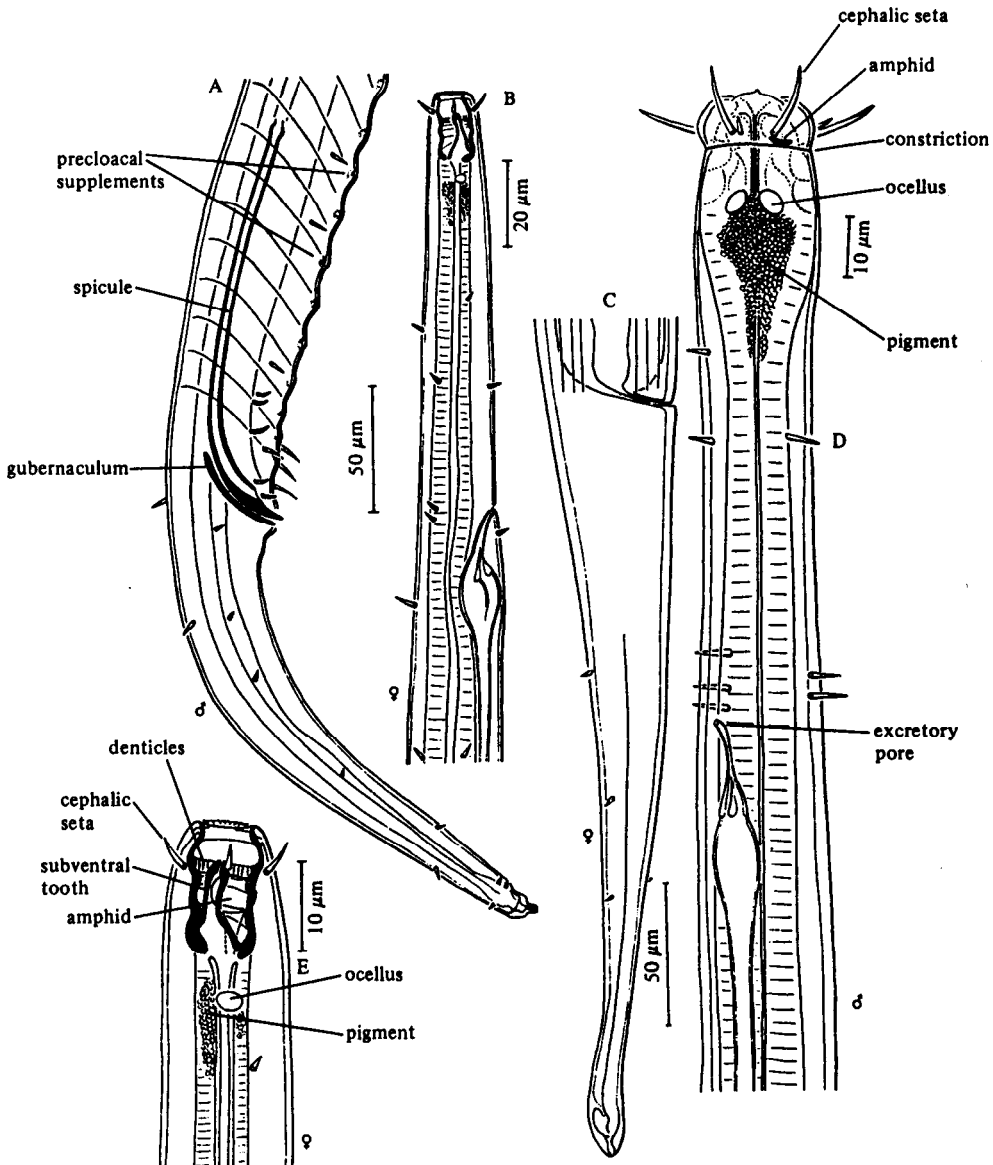


Fig. 120. *Symplocostoma tenuicolle*. A, Male tail; B, Anterior end of female; C, Female tail; D, Anterior end of male; E, Female head (from Luc and De Coninck, 1959).

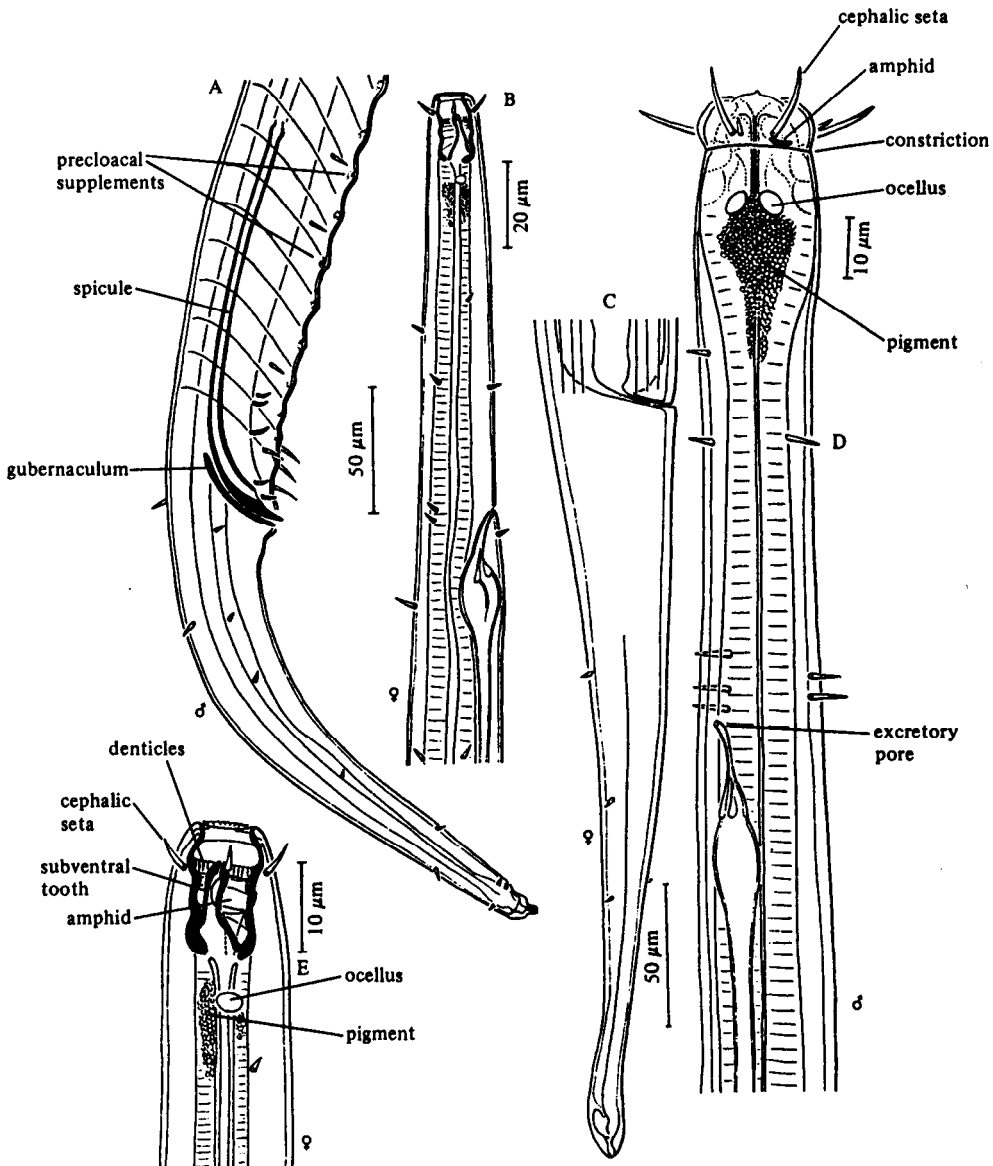


Fig. 120. *Symplocostoma tenuicolle*. A, Male tail; B, Anterior end of female; C, Female tail; D, Anterior end of male; E, Female head (from Luc and De Coninck, 1959).