

Sabatieria lyonessa Warwick, 1977
(Fig. 87)

Praedatrix group.

Description. Body length 3.7–3.9 mm. Maximum diameter 52–56 μm ($a = 70$ –72). Lateral cuticle has fewer transverse rows of dots. Four cephalic setae 11 μm (0.5 h.d.) in male, 8 μm (0.4 h.d.) in female. Amphids in both sexes of 2 turns only. Tail in male 2 a.b.d., conical with a short cylindrical section near the tip; in female 1.8 a.b.d., constricted sharply with a longer cylindrical tip (Fig. 87B).

Spicules 117 μm (2.1 a.b.d.). Gubernaculum apophysis straight. 26 indistinct tubular precloacal supplements.

Distribution. Isles of Scilly (kelp holdfasts).

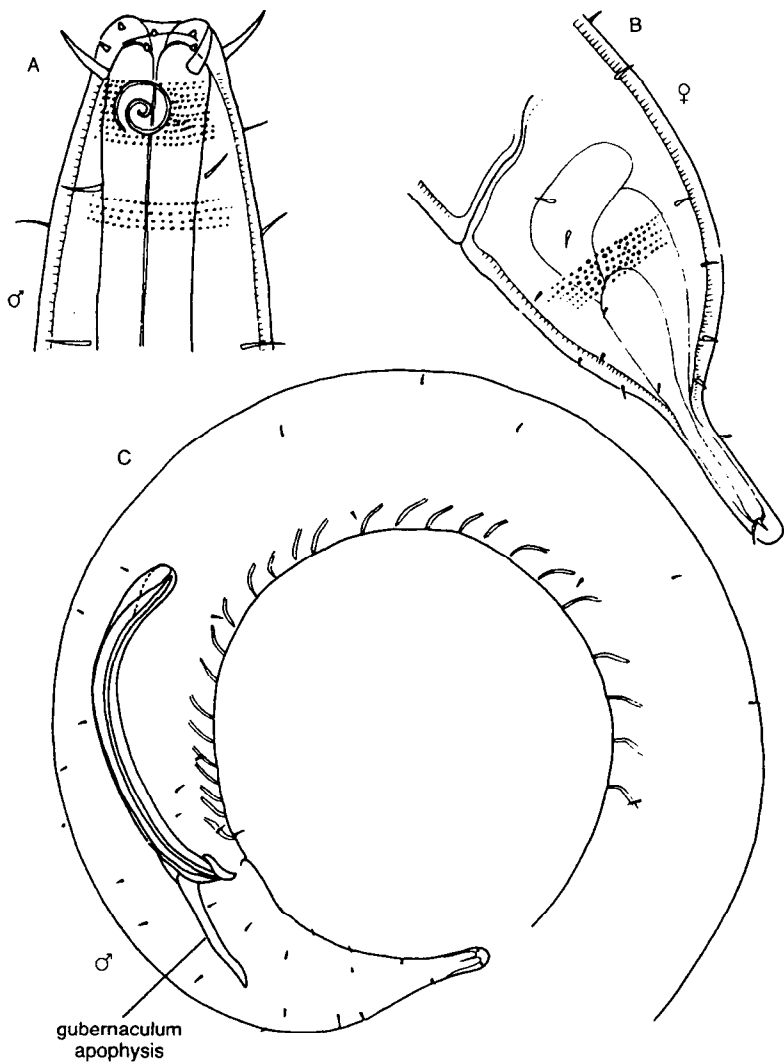


Fig. 87. *Sabatieria lyonessa*. A, Male head; B, Female tail; C, Posterior end of male. Original.