

Rhabditis ehrenbaumi Bresslau and Stekhoven, 1935
(Fig. 137)

Description. Body length 0.9–1.6 mm ($a = 14–21$). Head similar to *R. marina*. Oesophagus with characteristic middle and posterior bulbs; length about 25% of total body length. Tail short and rounded with a pointed terminal spike.

Spicules about 70 μm .

Gubernaculum about one-third of spicule length. Cloaca surrounded by bursa copulatrix consisting of flaps of cuticle supported by ten pairs of papillae. Single reflexed testis.

Two reflexed ovaries. Vulva at 52–60% of body length.

Distribution. Found in rotting seaweed in South Wales, Plymouth and Weston-super-Mare but occurrences may only be accidental introductions from the land.

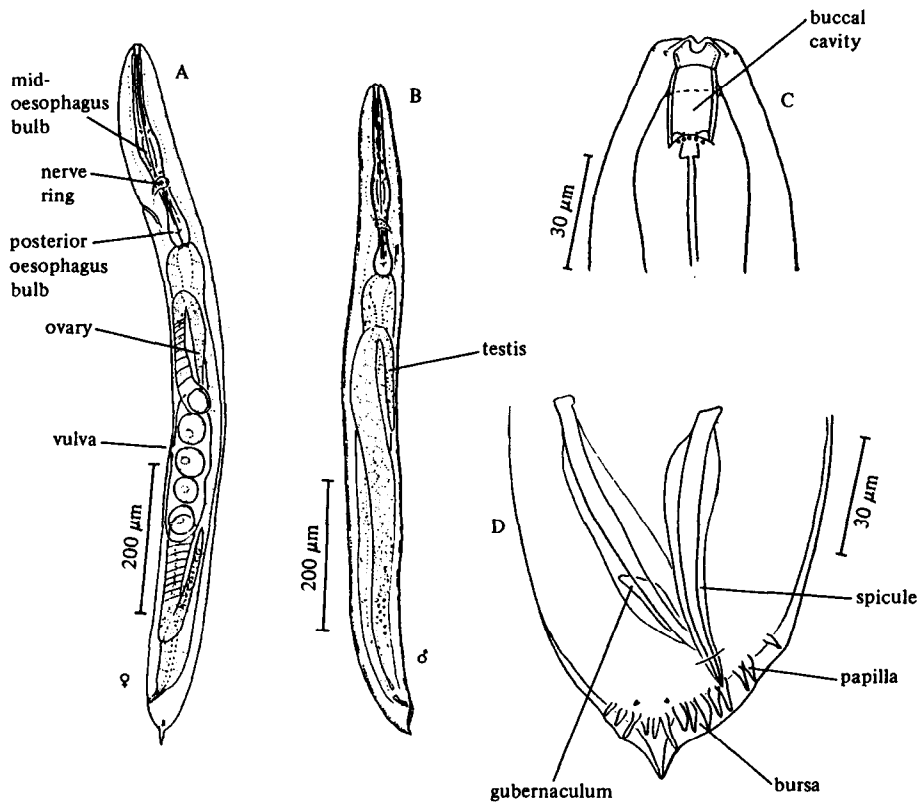


Fig. 137. *Rhabditis ehrenbaumi*. A, Entire female; B, Entire male; C, Head; D, Male tail (from Inglis and Coles, 1961).