

Quadricoma scanica (Allgén, 1935)

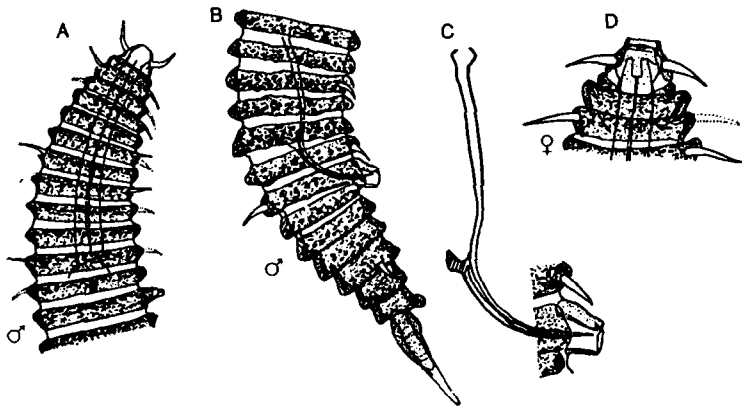


Fig. 227. *Quadricoma scanica*. A, Anterior end of male; B, Male tail; C, Spicules and gubernaculum; D, Female head. From Lorenzen (1969).

Description (from Lorenzen, 1969). Body length 0.3–0.4 mm: $a = 7-8$. 39 asymmetrical desmen; in the male the 13th or 14th desmen has a ventral protuberance. Four 11–12 μm cephalic setae. Somatic setae not regularly paired, nor are they in a fixed arrangement. However, in all animals there are 13 subdorsal and 21–23 subventral setae: 9–12 μm long in anterior part of body, 13–15 μm in posterior part. Amphids almost cover the whole head (Fig. 227D).

Spicules 63–70 μm , long, slender, distally arcuate with proximal cephalisation. Gubernaculum with paired dorsal apophyses. Cloacal opening an extended tube (Fig. 227C).

Distribution. Tamar estuary, South West England (intertidal mud).