

Prochromadorella attenuata (Gerlach, 1952)
(Fig. 52)

Description. Very similar to *P. septempapillata* except: body shorter (1.0–1.1 mm) and plumper ($a = 24–32$); lateral cuticle lacks the large dots in the anterior oesophageal region; distal tip of gubernaculum double. It is perhaps debatable whether this and the previous species are distinct, and a more critical comparison of material may show that they are synonymous.

Distribution. Isles of Scilly (intertidal sand).

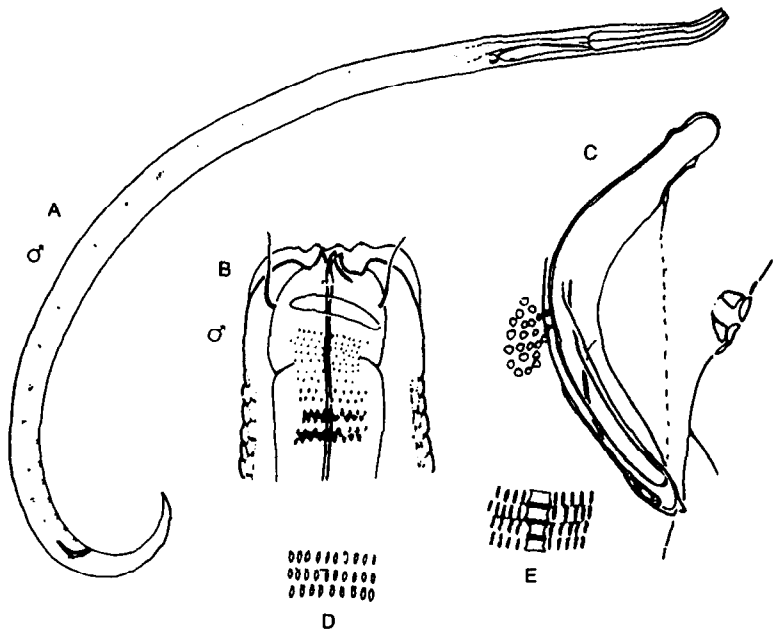


Fig. 52. *Prochromadorella attenuata*. A, Entire male; B, Male head; C, Cloacal region of male; D, E, Lateral cuticle at base of oesophagus and caudal region respectively. From Lorenzen (1972a).