

*Pontonema simile* (Southern, 1914)

(Fig. 106D, E, F)

**Description.** Body length 11.3, 18.0 mm. Maximum diameter 214, 280  $\mu\text{m}$  ( $a = 53, 64$ ). Buccal cavity similar to *P. vulgare*. Excretory pore about 4 buccal cavity lengths from anterior. Nerve ring about 0.35 times oesophagus length from anterior. Tail short and rounded.

Spicules large and stout, 184  $\mu\text{m}$  (1.5 a.b.d.).

Gubernaculum present with a conspicuous tooth distally. Papillae present just anterior to cloaca and anterior to proximal end of spicule (about 1.5 a.b.d. from cloaca).

Two reflexed ovaries. Vulva at 55% of body length.

**Distribution.** West Ireland (intertidal).

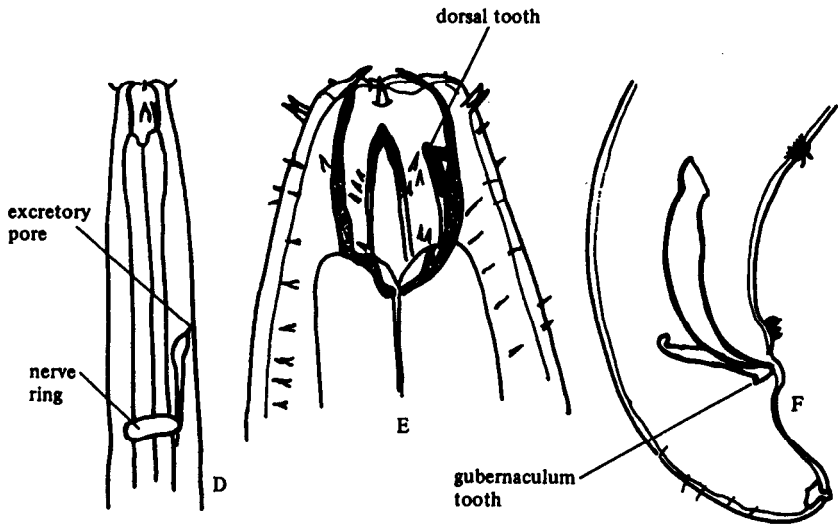


Fig. 106. *Pontonema simile*. D, Anterior end; E, Head; F, Posterior end of male (from Southern, 1914).