

*Paralongicyatholaimus minutus* Warwick, 1971

(Fig. 131)

*Description.* Body length 0.7–0.8 mm. Maximum diameter 21–27  $\mu\text{m}$  (a = 27–38). Cuticle with transverse rows of small dots. Four shorter 2–2.5  $\mu\text{m}$  and six longer 3–4  $\mu\text{m}$  (0.4–0.6 h.d.) cephalic setae. Buccal cavity cup-shaped; teeth absent. Amphids of about 4.5 turns, 5  $\mu\text{m}$  (0.5 c.d.). Oesophagus 87–92  $\mu\text{m}$  long, terminating in a rounded bulb 15–18  $\mu\text{m}$  long and 11–14  $\mu\text{m}$  wide. Tail 230–260  $\mu\text{m}$  (13–13.5 a.b.d.), filiform.

Spicules 29–32  $\mu\text{m}$  (1.6 a.b.d.) measured as a curve, arcuate, slightly cephalate proximally. Gubernaculum 14–17  $\mu\text{m}$ , pointed at both ends with a subterminal distal swelling. Supplements absent.

*Distribution.* Northumberland coast, North East England (sublittoral fine sand).

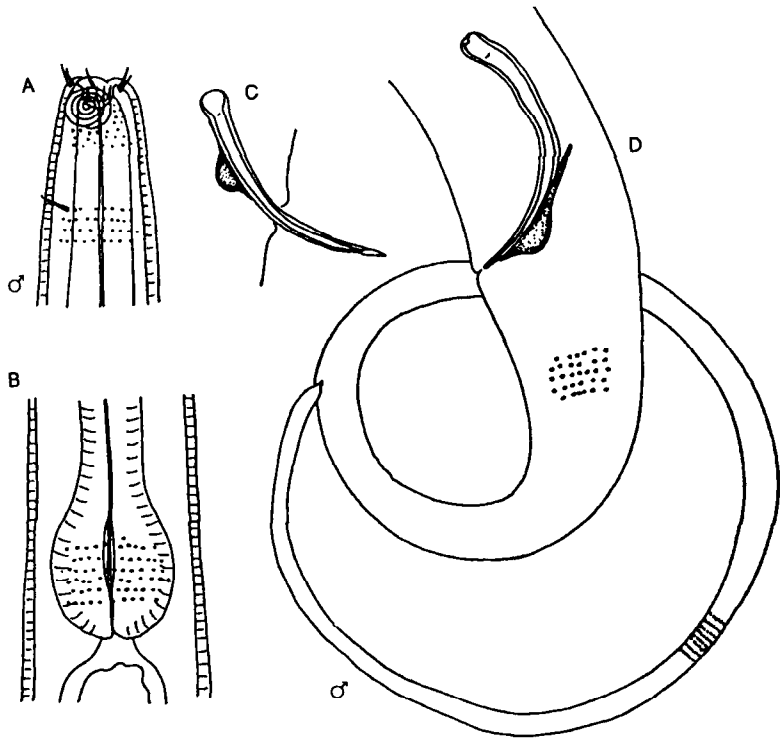


Fig. 131. *Paralongicyatholaimus minutus*. A, Male head; B, Region of oesophageal bulb; C, Spicules and gubernaculum; D, Male tail. Original.