

*Paradraconema spinosum* (Southern, 1914)  
(Fig. 172)

*Description* (from Southern, 1914). Only females known. Body length 1.0–1.1 mm. Maximum diameter 80  $\mu\text{m}$  ( $a = 13$ ). Described as being similar to *Draconema claparedii* (p. 370) except: cuticle striations coarser; somatic setae shorter and sparser, irregular on head but arranged in six files thereafter; amphids larger, almost forming a complete loop; a number of stout conical spines on rostrum in addition to the adhesive bristles; outer row of thirteen ambulatory setae, inner row of 25, increasing in size anteriorly with the outer setae longer than the inner.

*Distribution*. Clew Bay, West Ireland (sublittoral sand and shells).

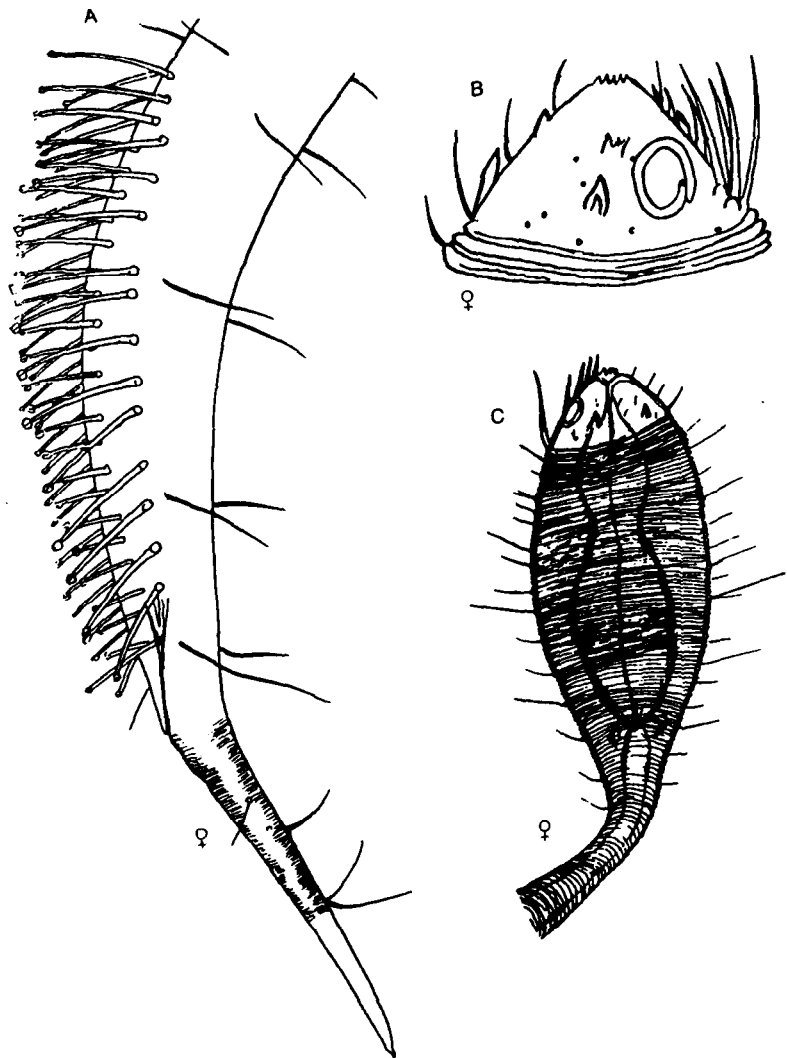


Fig. 172. *Paradraconema spinosum*. A, Female tail; B, Female head; C, Anterior region of female, ventral view. From Southern (1914).