

*Paracyatholaimus occultus* Gerlach, 1956  
(Fig. 127)

*Description.* Body length 0.9–1.2 mm: a = 24–33. Transverse rows of cuticle punctuations. Ten very short  $3.5\ \mu\text{m}$  (0.2 h.d.) cephalic setae. Amphids of about 8 turns,  $11\ \mu\text{m}$  (0.6 c.d.) in male, slightly smaller in female, rounded or transversely oval in outline. Buccal cavity with a large pointed dorsal tooth and a minute subventral tooth. Tail 3.3 a.b.d.

Spicules 23–31  $\mu\text{m}$  (about 1.0 a.b.d.), arcuate, cephalate proximally. Gubernaculum simple but with a characteristic single caudally directed apophysis of variable shape (Fig. 127A). Three or four small indistinct setose precloacal supplements.

*Distribution.* Loch Ewe, West Scotland; Firth of Clyde, West Scotland (inter-tidal sand).

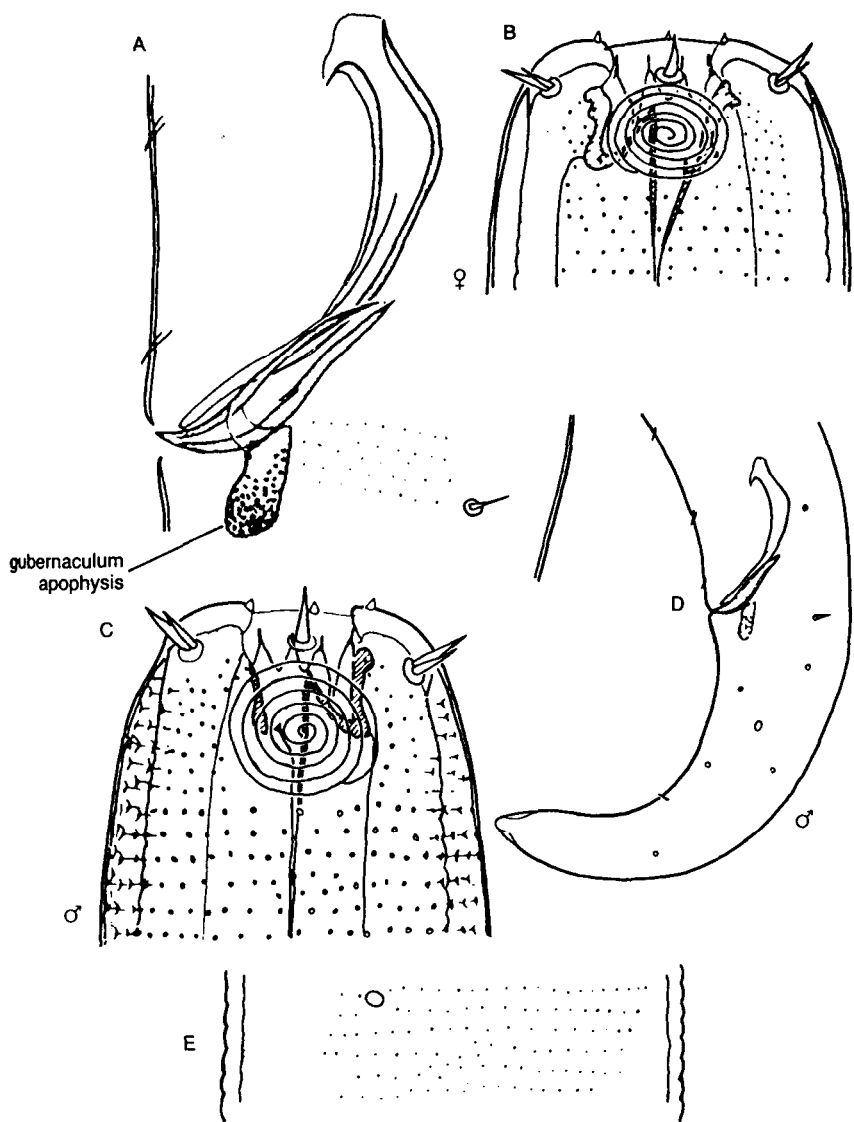


Fig. 127. *Paracyatholaimus occultus*. A, Cloacal region; B, Female head; C, Male head; D, Male tail; E, Cuticle in mid-body. From Lorenzen (1972b).